

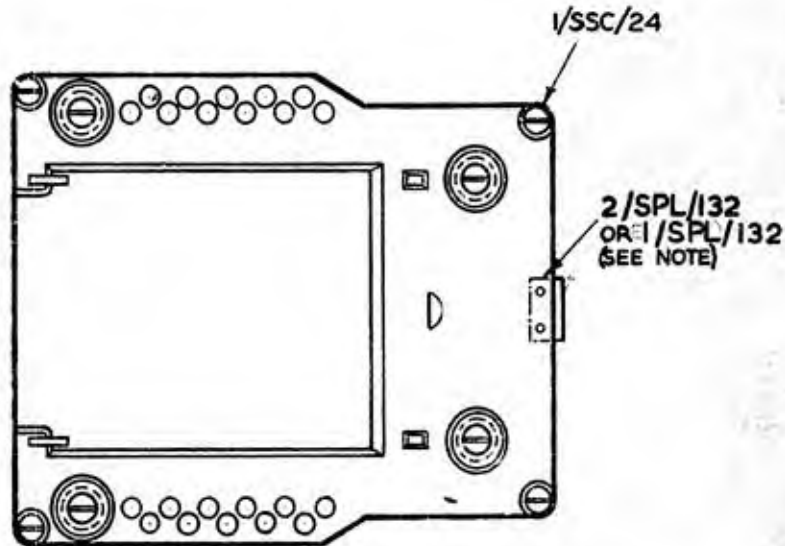
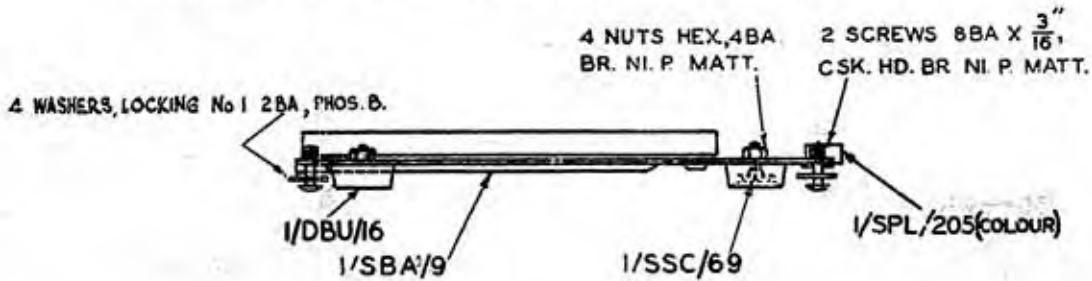
Trim to these lines.

13x8"

MASTER-IN-C. 438.

POST OFFICE ENGINEERING DEPT. ENGINEER-IN-CHIEF'S OFFICE.		DRG. SBA/12	
PART 1/SBA/12(COLOUR) BASEPLATE COMPLETE.		SPEC'N. —	
Suffix	Amendment.	Scale :- 1/2	File Ref. S 2500
FORMERLY DRG 12948.		Drawn. <i>W J G</i>	D.O. Ref. A2/1933
A	COLOURS ADDED. 12-10-45 <i>A. H. H. Kinn</i>	Traced. <i>W J G</i>	Date. 14-9-38
B	STOCK WAS NOT ENTERED. <i>D. J. M. 15.10.53</i>	Checked. <i>W J G</i>	App'd. <i>W J G</i> in 5 Branch.
C	4 WRS. LOCKING No 1. 2BA ADDED <i>D. J. M. 15.10.53</i>	<i>Freid.</i>	
D	2/SPL/132 OR 1/SPL/132 SHOWN AS ALTERNATIVE FOR FIXING PART 1/SPL/205 TO PART 1/SBA/9. <i>D. J. M. 15.10.53</i>		
E	PART 1/DBU/16 WAS PART 1/SBU/5. <i>S. G. 15.4.59</i>		
		Drawings Diagrams & Spec'ns.	
		SEE SCHED.	
		Spec. D. 1000	

COLOURS:- BLACK, CHINESE RED, IVORY & JADE GREEN



NOTE :-

IF PART 2/SPL/132 OR 1/SPL/132 IS USED WITH PART 1/SPL/205 AS ALTERNATIVE FIXING, THEN SCREWS 8 B.A. X 1/4 WILL BE REQUIRED.

PART	QTY
1/SBA/9	1
1/SPL/205(COLOUR)	1
1/DBU/16	4
1/SSC/69	4
1/SSC/24	4
SC. 8 B.A. X 3/16 OR 1/4 (SEE NOTE)	2
CSK. HD. BR. NI. P. MATT.	
NUTS. HEX. 4BA. BR. NI. P. MATT	4
WRS. LOCKING No 1. 2BA. PHOS. B.	4

FIRST USE: TELEPHONE No. 326.

MICROFILMED