

2/ U.U.

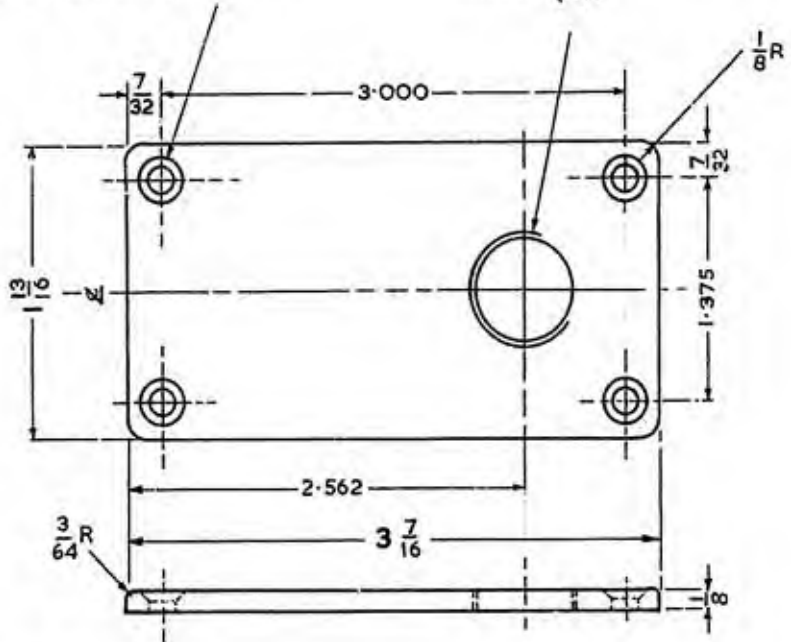
TRIM TO THESE LINES 13" x 8"

DRG. DPL/719

POST OFFICE ENGINEERING DEPT S BRANCH	
P.O.	DISTRIBUTION GENERAL
REFERENCES	
SPEC. S 116	SPEC. D 1000 " BS 771
ASSEMBLY DRG.	WIRING DGM.
FILE S3200/...	SPEC
SCALE :- 1/1	AND AS THIRD ANGLE INDICATED PROJECTION
DECIMAL DIMENSIONS NOT TOLERANCED SUBJECT TO	
APP'D. IN S2/2 SECTION M. S. S. S. S.	DRN. J.B. TCD. S.H. CKD. J.C. DATE. 6.1.59
AMENDMENT	SUFFIX
THREADED HOLE :- CORE DIA. W/S .625 MAX H/S .27 (1.61)	A
PART 21/1 ADDED. J.C. J.C. 12.2.62	B
FOR SUPERSED	
PART 1-/DPL/719 (PLATE, JACK)	
DRG. DPL/719	

4 HOLES .154 DIA. & CSK.
FOR WD. SC. No. 6.

THREADED HOLE 26 T.P.I. WHIT. FORM
RT. HD. MIN. CORE DIA. .630, O.DIA. OF
THREAD { .682
.679



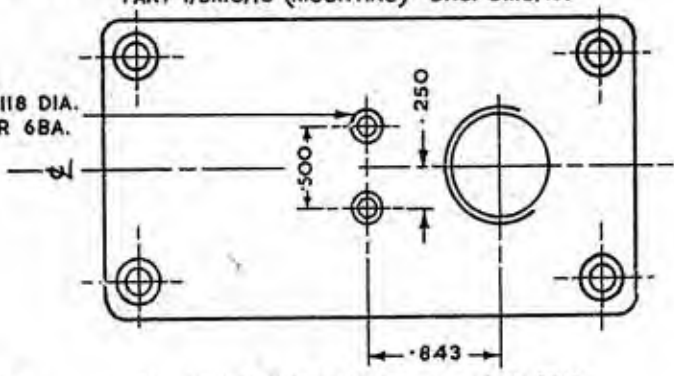
1/DPL/719

MATERIAL :- SYNTHETIC RESIN (PHENOLIC) MOULDING MATERIAL,
TYPE MS, BLACK, SPECS. B.S. 771 & S 116.

FINISH :- FRONT FACE & EDGES POLISHED FROM MOULD.

FIRST USE :- WITH JACK No. 84... (DRG. 90841) ON
PART 1/DMO/18 (MOUNTING) DRG. DMO/18.

2 HOLES .118 DIA.
& CSK. FOR 68A.



2/DPL/719

ALL OTHER PARTICULARS AS 1/DPL/719

FIRST USE :- JACK No. 84 A - 3 (DRG. 91667)

DIMENSIONS IN INCHES

DO NOT SCALE
(A MICROFILM PROCESS PRINT)

LIMIT OF DRAWING SPACE