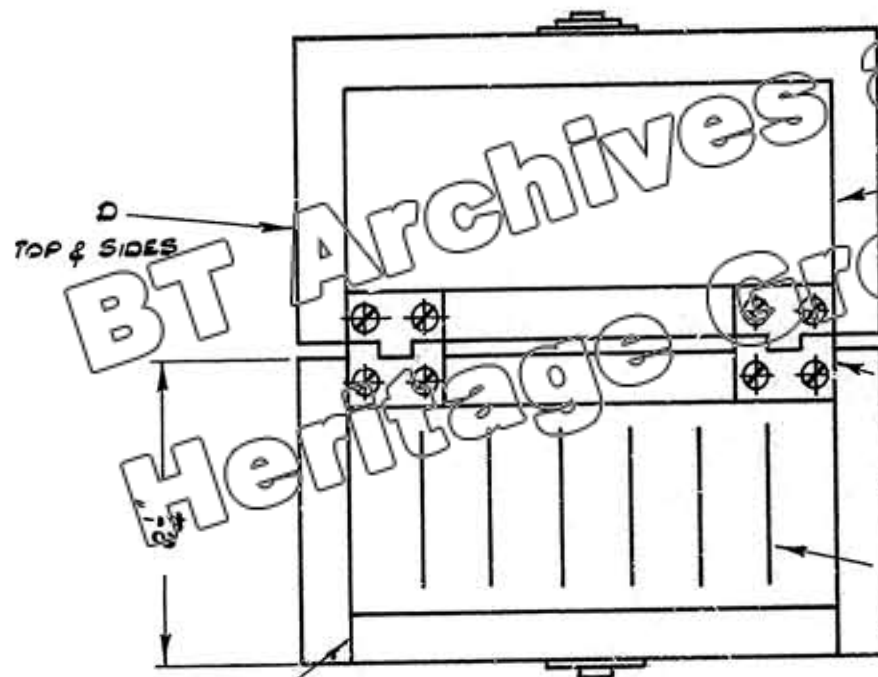


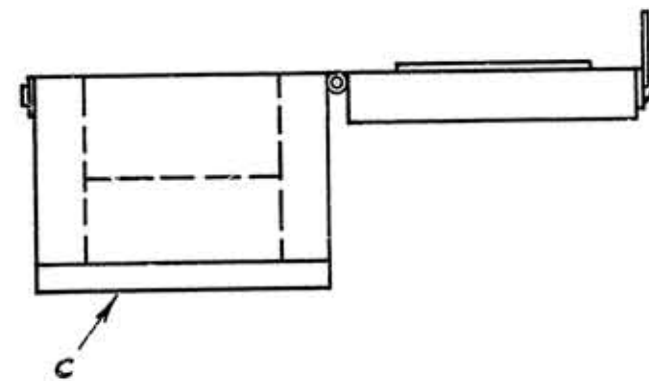
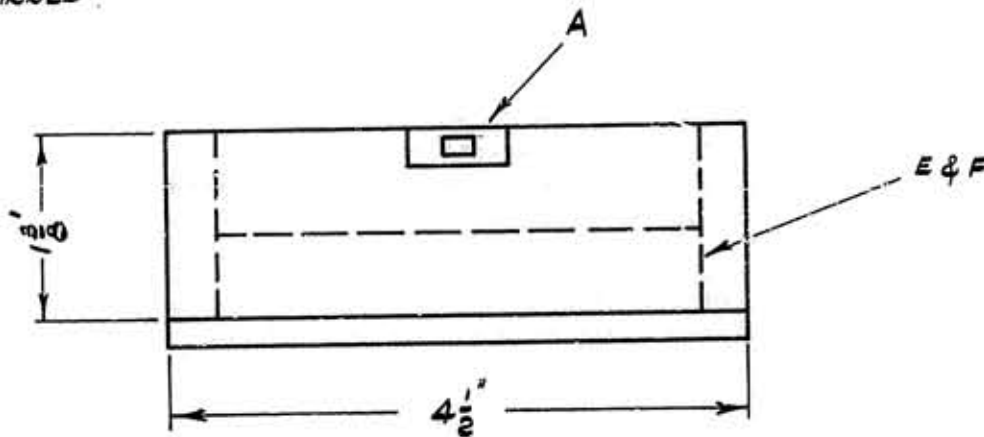
ORIGINAL FRAME SIZE: 380mm x 554mm

THIRD ANGLE PROJECTION



CORNERS GLUED & PINNED

SLOTS TO HOLD DISCS TEST SET NO 6 (DRG CN 9055) TIGHTLY.



SCHEDULE							
REF	DESCRIPTION	MATERIAL	NO OFF	SCREWS, ETC	MTL	FINISH	NO OFF
A	FASTENER		1	AS REQD		1	
B	HINGE	BRASS 3/4 LG	2	WOOD SCREW CSKH0 MS		ZVP	4
C		3/16 BONDED RESIN PLY	AS REQ			STAINED DARK & VARNISHED	
D		3/8 APPROVED HARDWOOD	AS REQ				
E		FOAM RUBBER 5/8 THICK	AS REQ				
F		VELVET	AS REQ				

A2 A3	DRN FH CKD <i>RF</i>	AMENDMENT	ISSUE	MATERIAL	FINISH	DO NOT SCALE REFERENCES ASSY DRG CN 9054 DRG CN 9055
	CERTIFICATION <i>Sanhanton</i>			SEE SCHEDULE	SEE SCHEDULE	
E-IN-C 4652	DATE 28.4.70	POST OFFICE TELECOMMUNICATIONS HQRS TO 8.7.3 SECTION		CASE FOR DISCS TEST SET NO 6 CN 9056		