

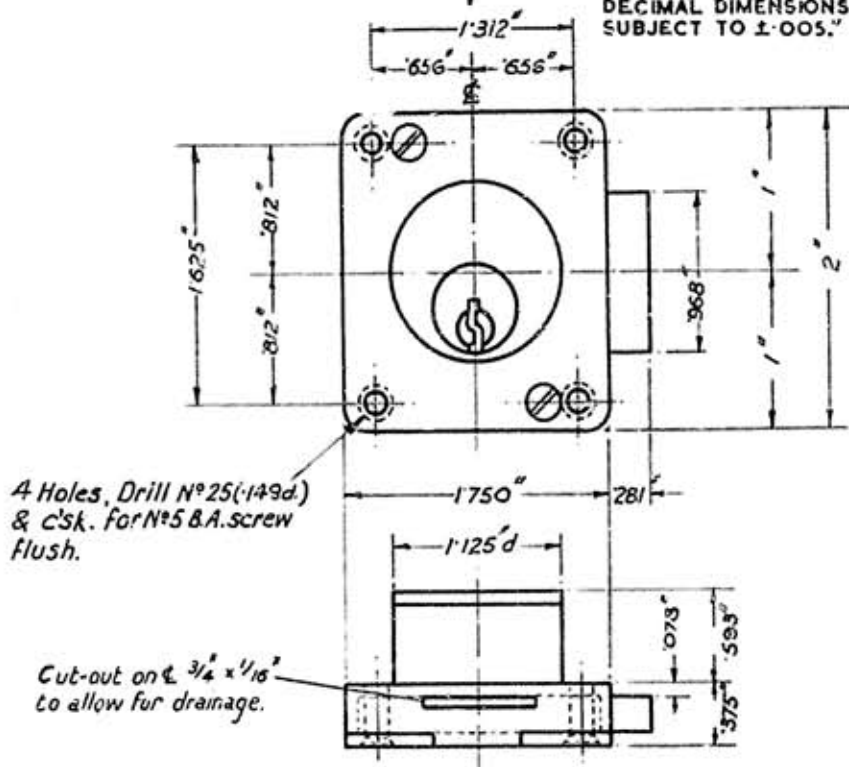
Trim to these lines.

13x8

E-in-C.438.

POST OFFICE ENGINEERING DEPT. ENGINEER-IN-CHIEF'S OFFICE.			
LOCK No.12 with KEY; LOCK N.		DRG. CD 112	
		SPEC'N. -	
Suffix	Amendment.	Drawings Diagrams & Spec'ns.	Scale :- $\frac{1}{4}$ File Ref. <input checked="" type="checkbox"/>
A	NOTE. RE MARKING OF LOCK ADDED <i>Sgt. A/S95. Sac K.H. 22-6-38</i>	Drawn. <i>M.B.W.</i>	Date 29-9-38
B	CUT-OUT FOR DRAINAGE ADDED <i>Sgt. A/S95. Sac K.H. 22-6-38</i>	Traced	
C	TOLERANCE NOTE ADDED <i>Sgt. A/S95. Sac K.H. 22-6-38</i>	Checked. <i>Sgt. A/S95. Sac K.H. 22-6-38</i>	Apprd. <i>[Signature]</i> in S Branch.
D	DIA. OF FIXING HOLES WAS .136" <i>Sgt. A/S95. Sac K.H. 22-6-38</i>		
E	NOTE 2 ADDED. <i>D.E.B. 4.12.58</i>	Spec. D.1000	

DECIMAL DIMENSIONS NOT TOLERANCED SUBJECT TO $\pm .005$."



NOTES:- 1. LOCK TO BE MARKED "12" ON BACK
 2. TO BE AN "ETAS" BRASS CYLINDER CUPBOARD LOCK No. 55

