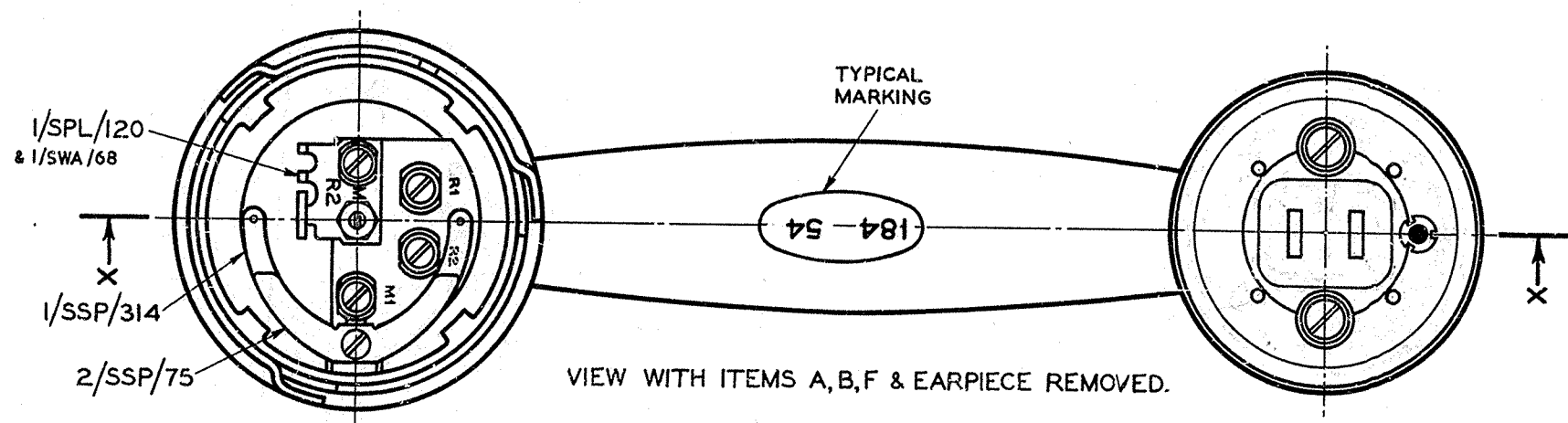


Hebert

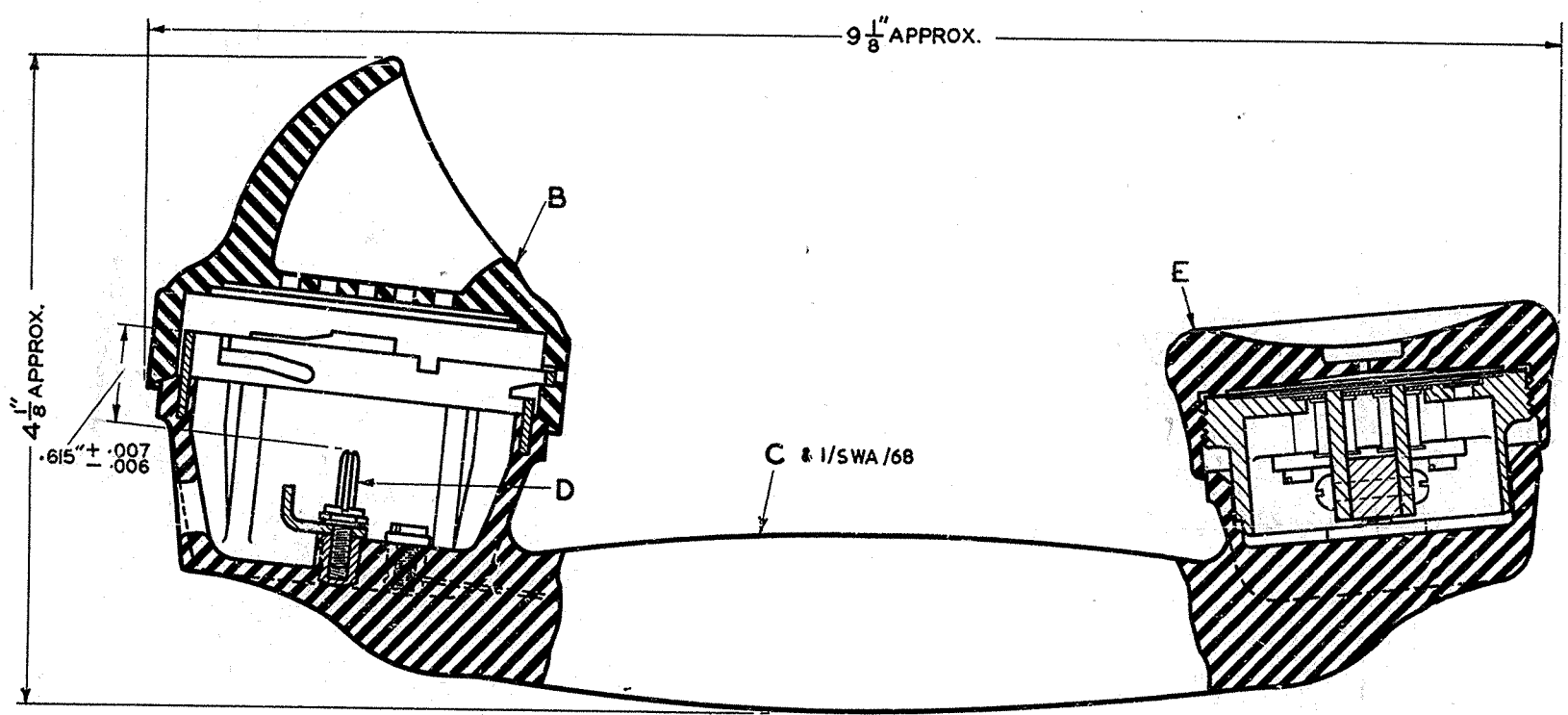
TAC. ITEM

Supersede

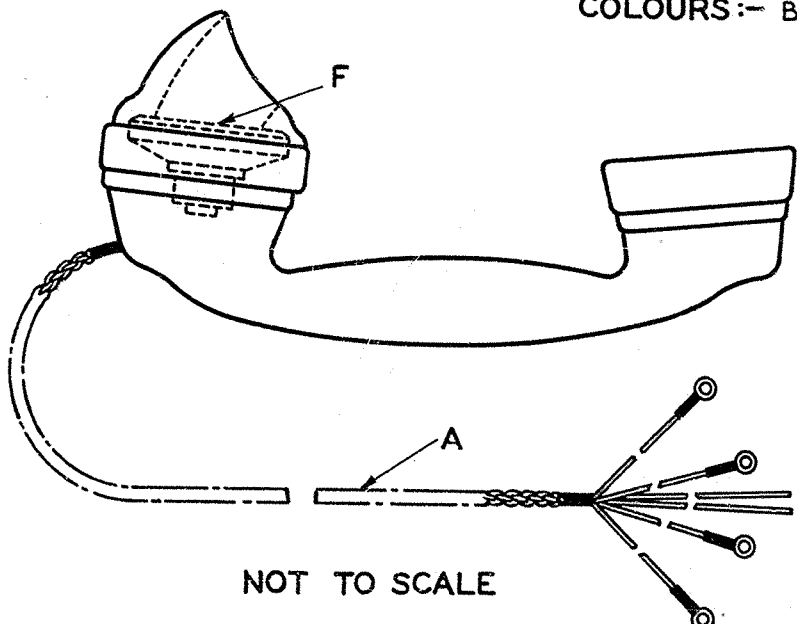
Amendment	Suffix
ITEM E:- DRG. No. WAS SHOWN AS DRG. 62911/2. d.s. <i>gld lsb</i> 25-6-48	A
ITEM G ADDED UNDER ITEM D. <i>SK HVS</i> 14.5.54	B
ITEM G DELETED. WASHER, LOCKING NOW PART OF ITEM D. <i>SK HVS</i> 14.6.54.	C
ITEMS C & 1/SPL/120 - WASHER 5 CBM. DELETED: SC. WERE CONN. HD. ITEM 1/SWA/68 ADDED. <i>RES. W.P. 2. 11.4.61</i>	D



VIEW WITH ITEMS A, B, F & EARPIECE REMOVED.



PART SECTION X-X WITH ITEMS A & F REMOVED.
COLOURS :- BLACK, CHINESE RED, IVORY & JADE GREEN



NOTE 1:-
ITEM "A" TO BE CORD, INST. 4/42A, BROWN, 28" FOR "TELE. No. 184 BLK., WITH CORD, INST. No. 4/42A, BROWN, 28"

ITEM	DESCRIPTION	QTY.	DRG.	SCREWS, WASHERS, ETC.		
				QTY.	DESCRIPTION	MTL. FINISH
A	CORD, INST. No. 4/42A (COL) 42" (NOTE 1)	1	62,227	-	-	-
B	MOUTHPIECE No. 15 (COLOUR)	1	62,626	-	-	-
C	PART No. 1/SBO/1 (COLOUR)	1	SBO/1	3	SC. 5BA. X 3/16" CH. HD.	BR. NI. P.
D	PART No. 1/SPL/389	1	SPL/389	1	WASHER, LOCKING No. 1. 5BA	PH. BRONZE CLEAN OR NI. P.M.T.
E	RECEIVER, INSET No. 2P (COLOUR)	1	62,911/1	-	-	-
F	TRANSMITTER, INSET No. 13	1	62,808	-	-	-
1/SPL/120	-	1	SPL/120	1	SC. 5BA. X 3/16" CH. HD.	BR. NI. P.
2/SSP/75	-	1	SSP/75	1	SC. 8B.A. X 1/8" CH. HD.	BR. NI. P.
1/SSP/314	-	1	SSP/314	-	-	-
1/SWA/68	-	4	SWA/68	-	-	-

GENERAL DISTRIBUTION

SEE SCHED.	N 284	D. 1000.
Drgs.	Dgms.	Specs.

TELEPHONES Nos.
184 (COLOUR) (MK. 2)
184 BLACK, WITH CORD, INST. No. 4/42A BROWN 28" (MK. 2)

Scale :- 1/4" and as indicated
Spec. S79
Wiring Dgm. N284
Assembly Drg.

DRG. 9,808/1