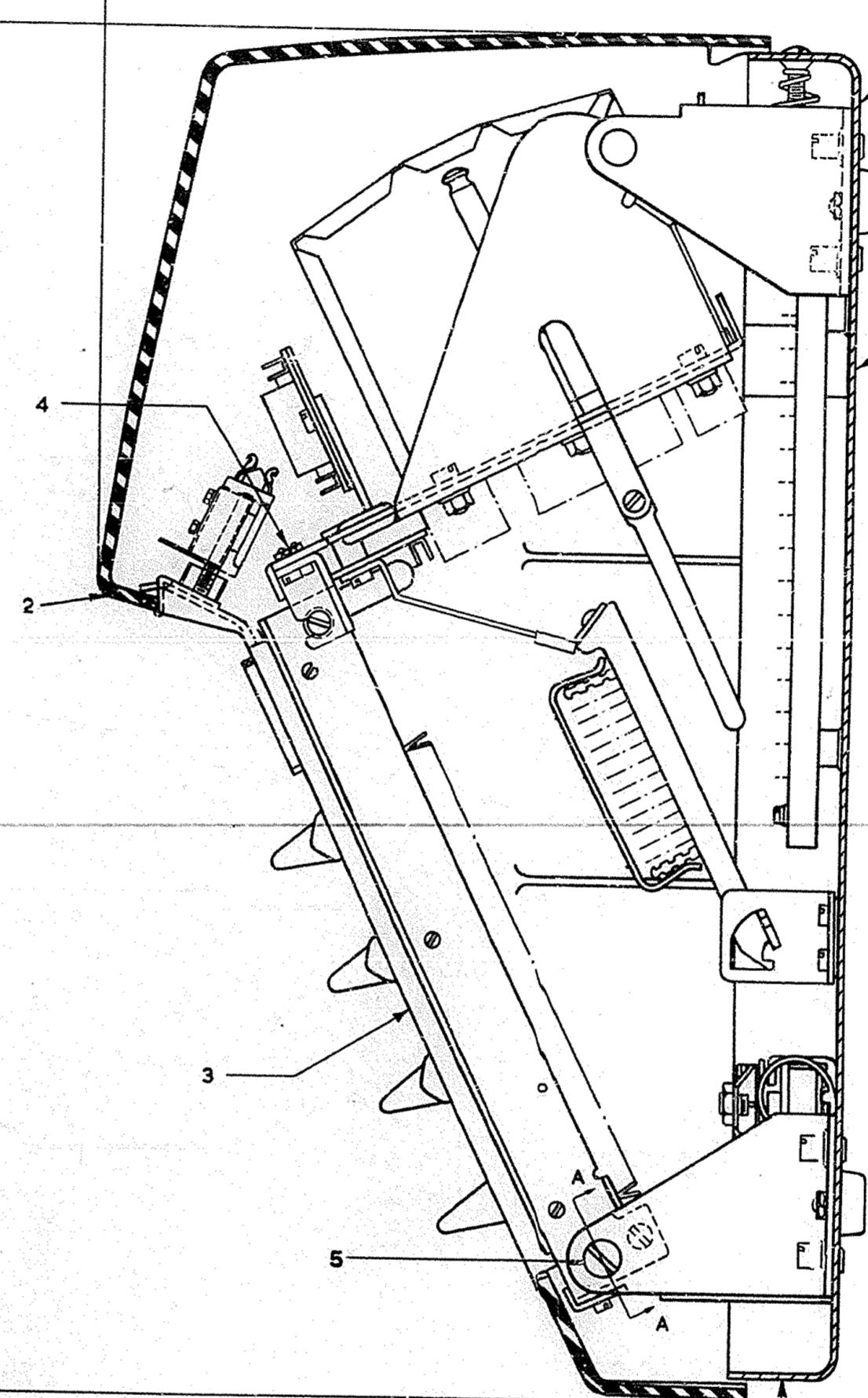


1'-11 1/8" APPROX

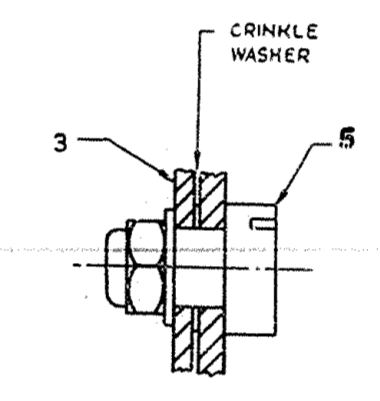
5'-8 1/2" APPROX

1'-7 1/2" APPROX



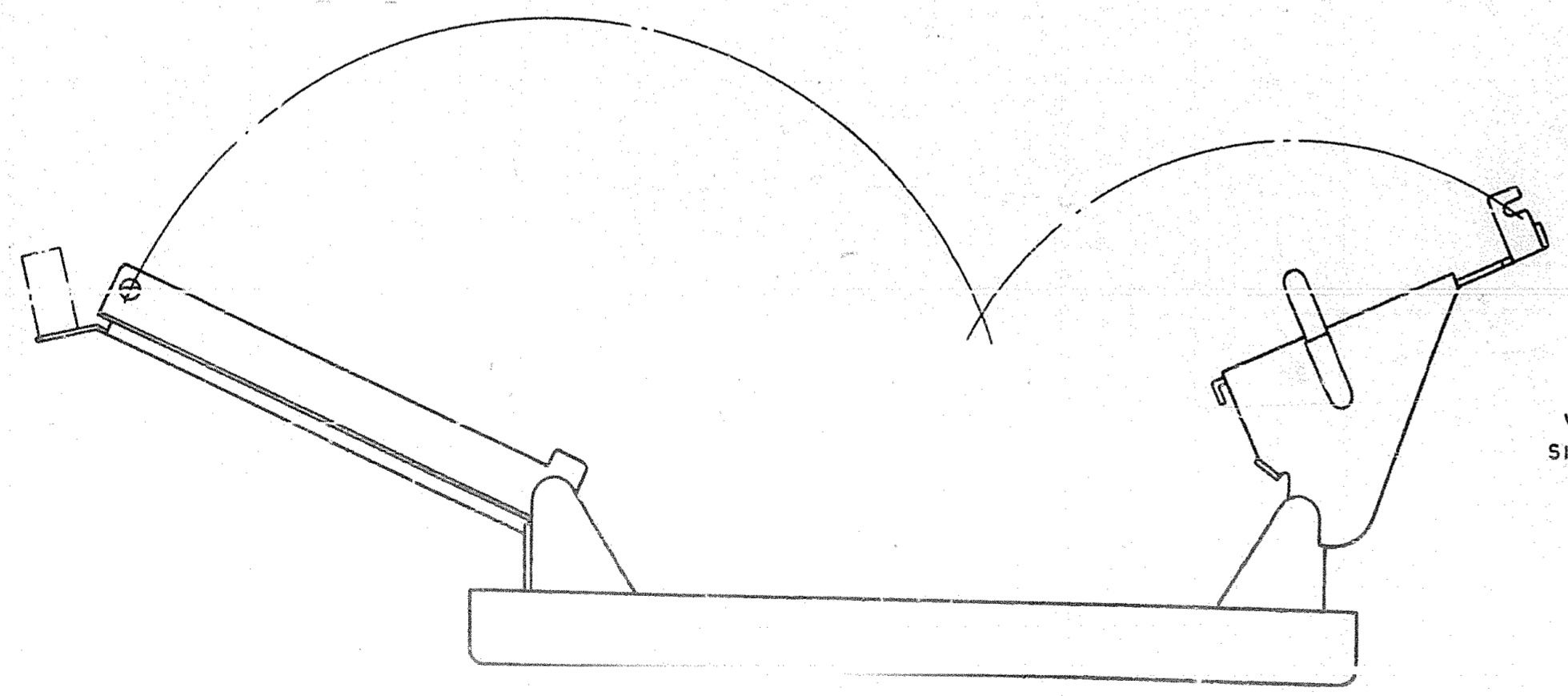
WASHER - SWITCHBOARD P.M.B.X. 2/4A
DGM SAW 71650 ISSUE 1
(SEE SPEC D1000)

TYPICAL MARKING - FHP 99/2
(SEE SPEC D1000)



SECTION A-A
SCALE - 2/1

VIEW WITH COVER & BASE
IN SECTION



VIEW, WITH COVER REMOVED
SHOWING HINGED KEY & RELAY
PLATES IN OPEN POSITION

SCHEDULE							
ITEM	DESCRIPTION	DRG.	NO. OFF.	SCREWS, ETC.	MTL.	FINISH	NO. OFF.
1	BASE PLATE SUB-ASSEMBLY & COMPONENT SCHEDULE (COL. 10/1)	91891/1	1				
2	COVER, SWITCHBOARD NO 3 (MARK 2)	91834/1	1				
3	KEY PLATE SUB-ASSEMBLY & COMPONENT SCHEDULE	91893/1	1	SC. 2BA x 1/2" CH. HD.	M.S.	Zn Plac. OR Zn P&P	2
4	RELAY PLATE SUB-ASSEMBLY & COMPONENT SCHEDULE	91892/1	1	SC. 2BA x 3/8" CH. HD. WASHER, 2BA SMALL NUT, 2BA HEX. ORD.	M.S.	Zn P&P LOC OR Zn P&P	4
5	PART 1/DSC/467 (SCREW, 2BA) SPECIAL	DSC/467	2	NUT, SELF LOCKING SIMMONDS NYLOC TYPE, NP/B022 (OR EQUIV) WASHER, THOMAS HADDOX & STONES LTD. BIRMINGHAM TYPE BERYLLIUM COPPER CRINKLE WASHER, 2 BSF (OR EQUIV) WASHER, 2BA SMALL	M.S.	Zn Plac. OR Zn P&P	2

Ø REPLACEABLE ITEM

POST OFFICE ENGINEERING DEPT
BRANCH
DISTRIBUTION
GENERAL
REFERENCES
SPEC D1000
SPEC 5102
WIRING DGM
SAW 71650
FILE
BTTC
SPEC 5102
SCALE - 3/4 AND AS THIRD ANGLE
THIRD ANGLE
PROJECTION
DECIMAL DIMENSIONS NOT TOLERANCED
SUBJECT TO:
APP'D IN 53 SECTION
DRN
ET LTD
TCD
CKD CONTRA & RB
DATE 15-4-65
AMENDMENT
SUFFIX

FOR SUPERSEDE
SWITCHBOARD
P.M.B.X. NO 2/4A
(MARK 2)
ASSEMBLY
DRG 91838/1