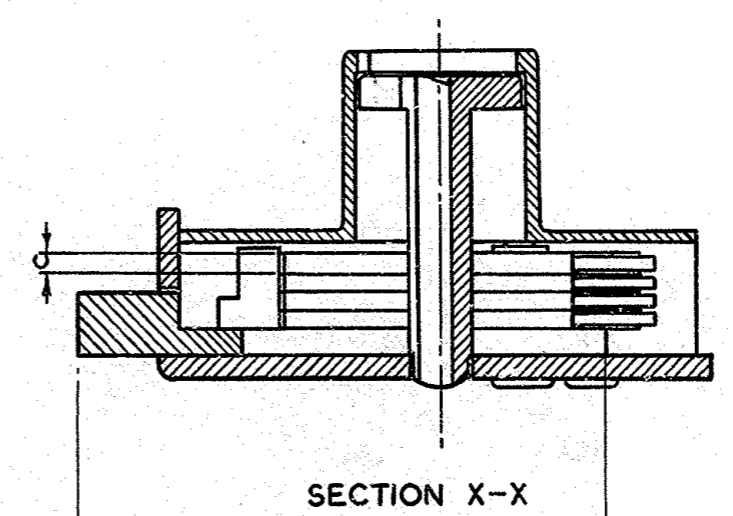
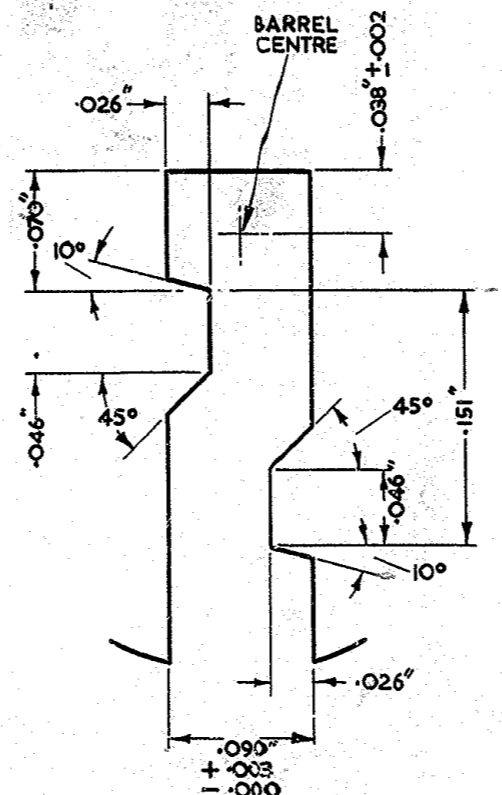
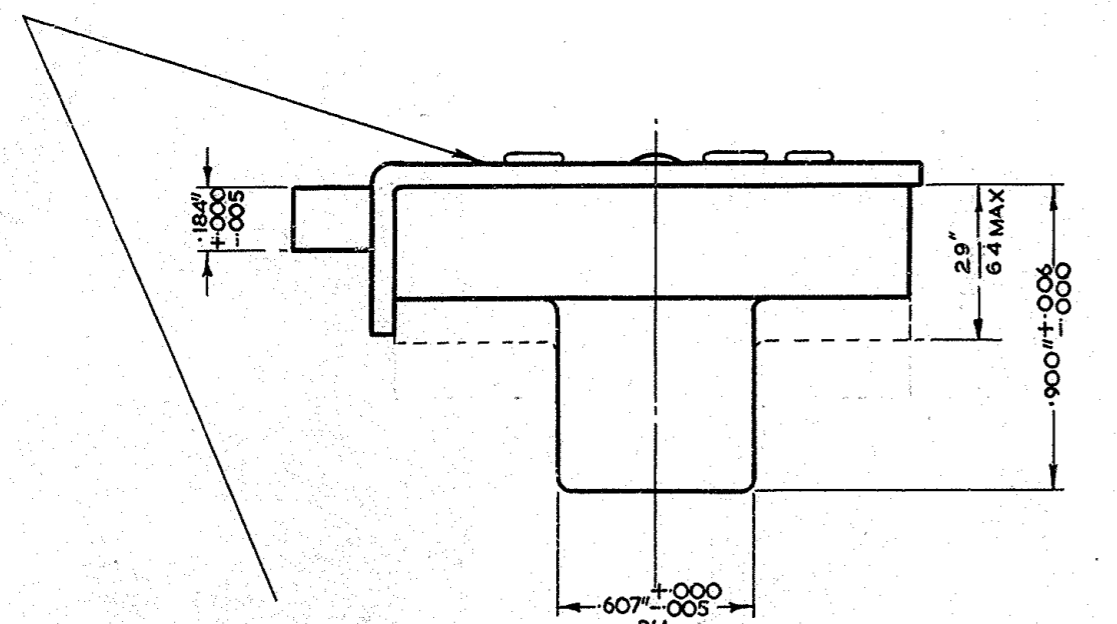
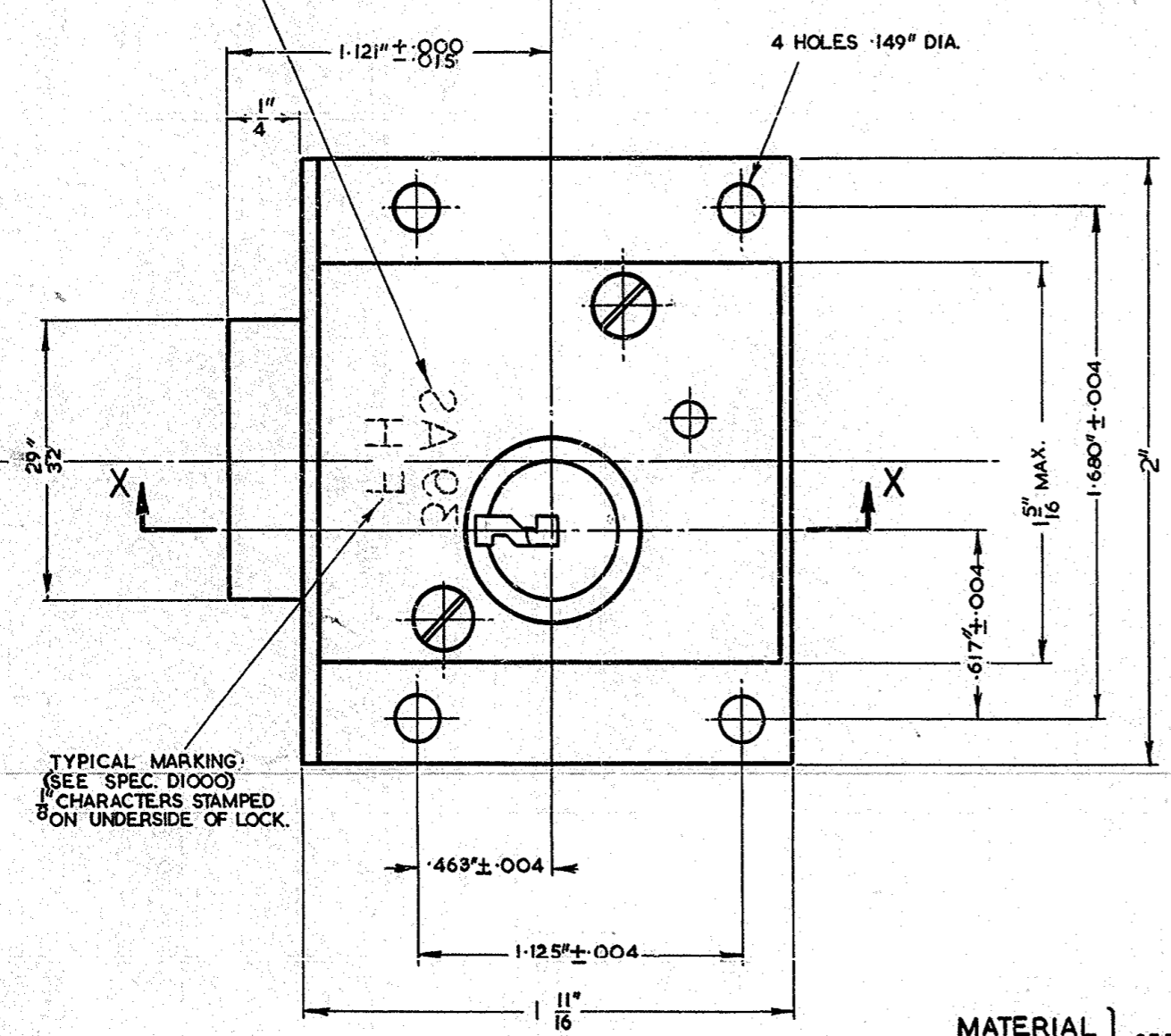


POST OFFICE ENGINEERING DEPT.	
E-IN-C'S OFFICE S BRANCH	
DISTRIBUTION	
100	NIL
REFERENCE	REF. 1/1000
	S 454
ASSEMBLY DRG.	WORKING DRAWG.
FILE 6602/4	SPEC S454
SCALE 2 AND AS THIRD ANGLE	PROJECTION
DECIMAL DIMENSION, NOT TOLERANCE SUBJECT TO ±.005"; FRACTL. ± 1/64	
APP'D IN CH. SGT. SRM.	DATE 29. 9. 54



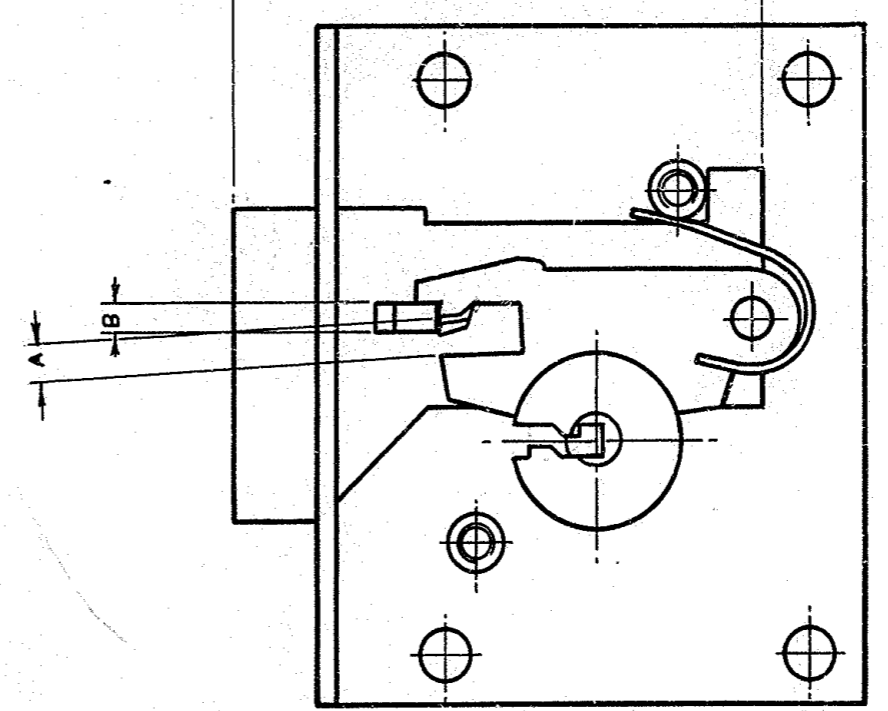
CODE No. & SERIAL LETTERS CHARACTERS, STAMPED ON UNDERSIDE OF LOCK.



TYPICAL MARKING (SEE SPEC. D1000) CHARACTERS STAMPED ON UNDERSIDE OF LOCK.

KEYHOLE PROFILE SCALE: 1/16

SECTION X-X



VIEW WITH COVER REMOVED

MATERIAL FINISH } SEE SPEC. S454

NOTE: 1. FOR DIMENSIONS A, B & C, SEE SPEC. S454. 2. DIMENSIONS ABOUT A 1/2 TO BE EQUALLY SPACED.

AMENDMENT	
1	KEYHOLE PROFILE DETAILS ADDED. DIMENSION 1 5/8 ADDED. NOTE 2 ADDED. DIM. 29 WAS 5" S.C.I. Selo G. 64 23.10.53
2	KEYHOLE WAS IN REVERSE
	meo hwb. G. 27. 5. 59

BOX, C.C. PART LOCK No. 39... AND KEY, LOCK, NO. 39... (LOCK ASSEMBLY)