

POST OFFICE ENGINEERING DEPT.
E. IN-C'S OFFICE S BRANCH

DISTRIBUTION RESTRICTED

REFERENCES
SPEC. D1000

ASSEMBLY DRG. WIRING DGM.

FILE. SPEC.

SCALE: 1" = 1" AND AS INDICATED 3RD ANGLE PROJECTION

FRACTIONAL DIMENSIONS NOT TOLERANCED SUBJECT TO 1/32

APPRO'D IN 52 SECTION DRN. *[Signature]*
TCD. *[Signature]*
CKD. *[Signature]*
DATE. 27.3.47

AMENDMENT SUFFIX
Formerly MS 6293 27-9-51

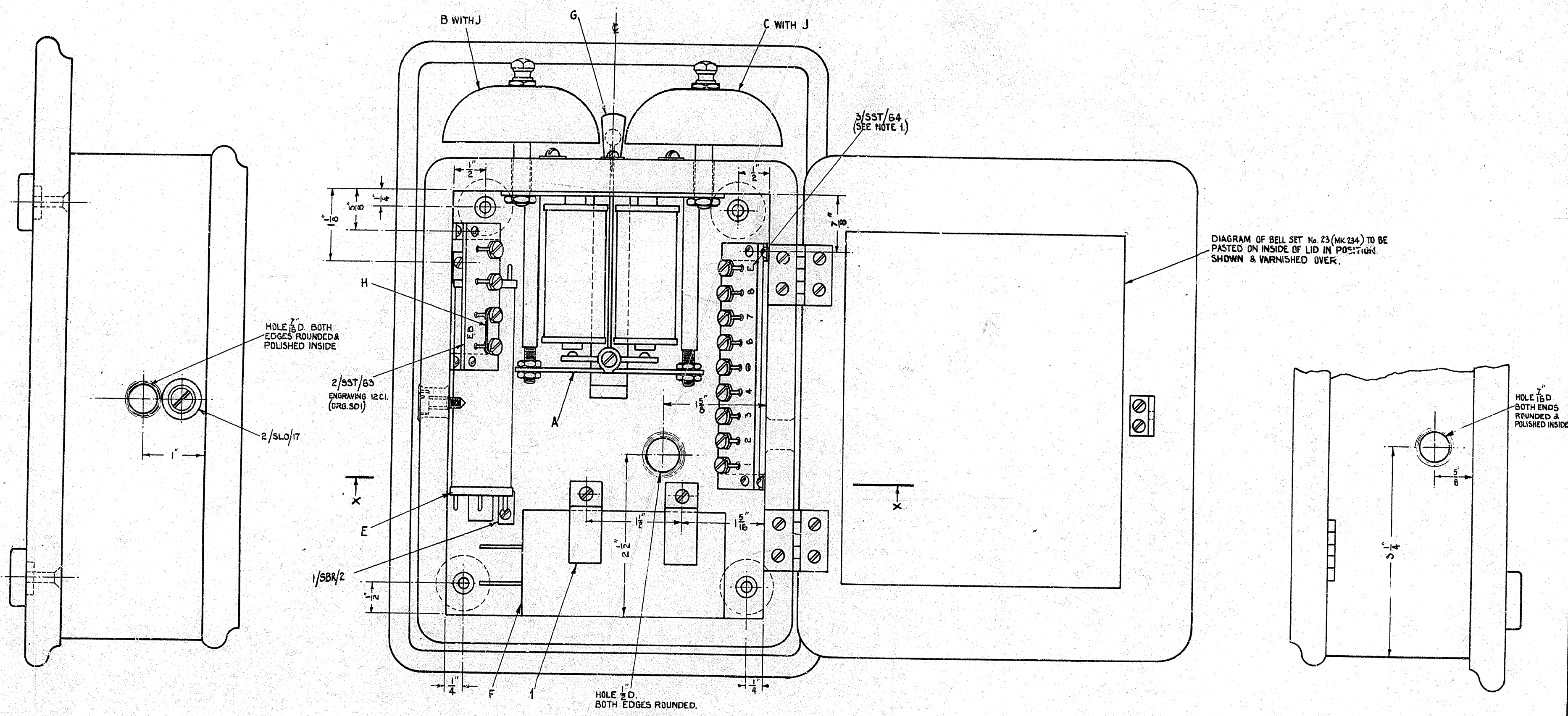
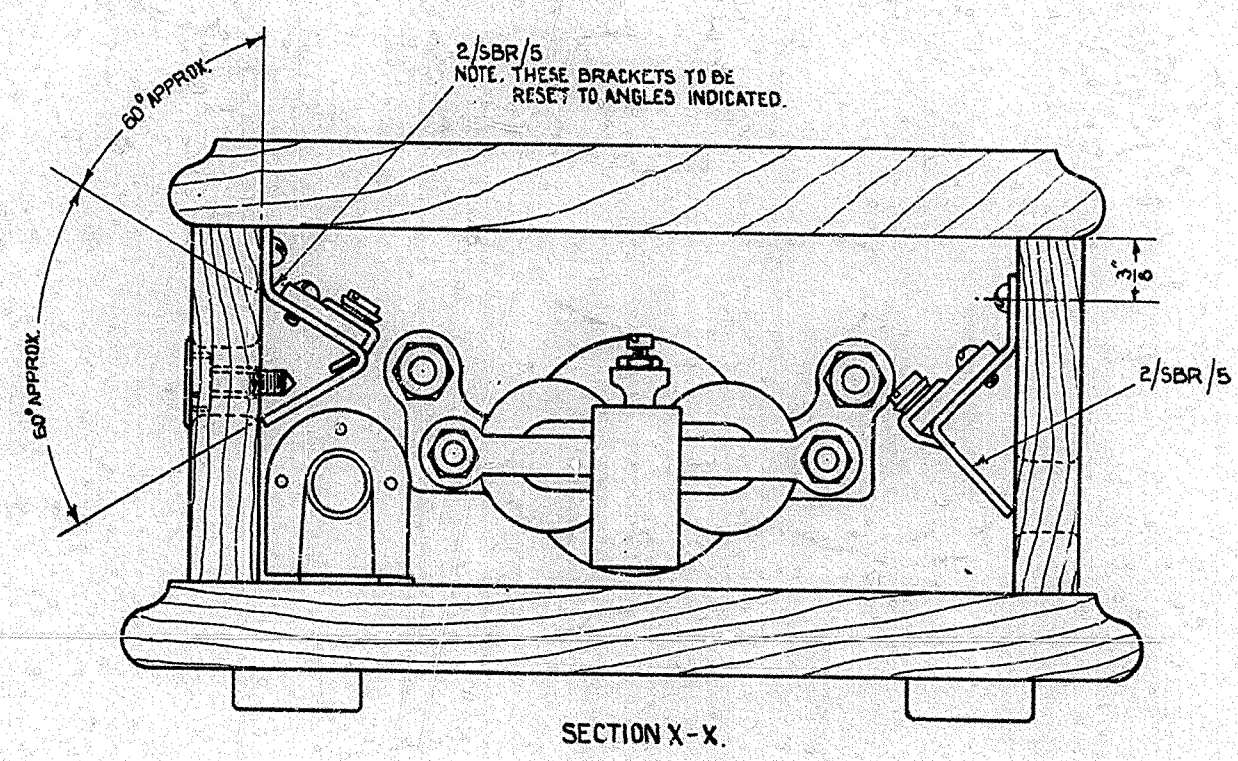
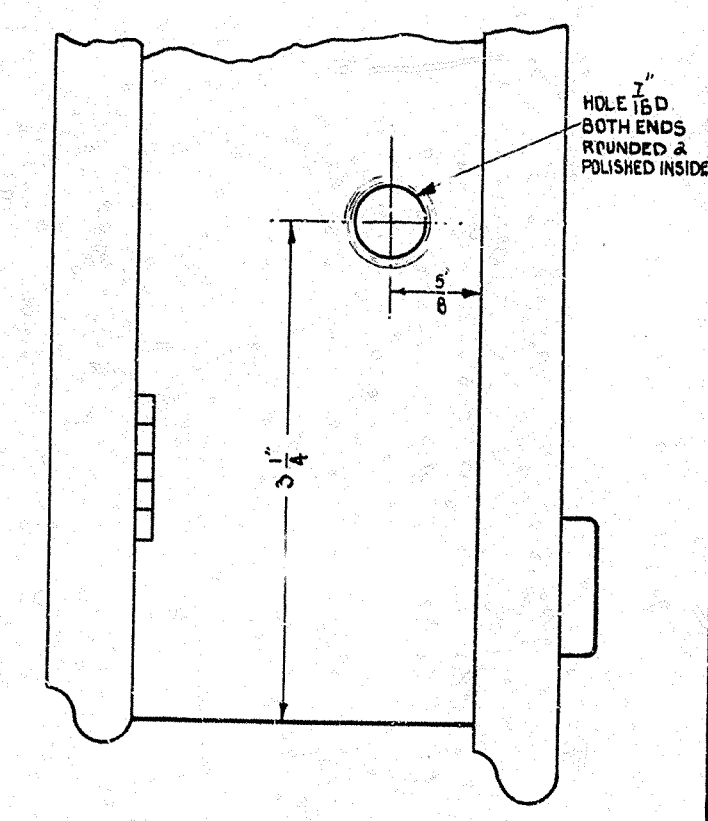
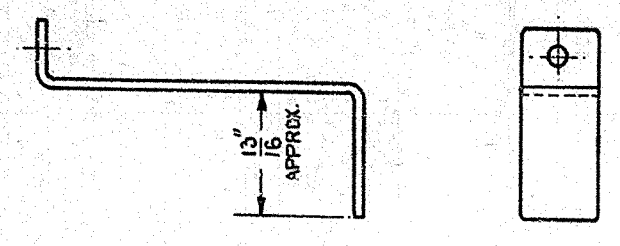


DIAGRAM OF BELL SET No. 23 (MK 234) TO BE PASTED ON INSIDE OF LID IN POSITION SHOWN & VARNISHED OVER.



SCHEDULE							
ITEM	DESCRIPTION	QTY.	DRG.	QTY.	SCREWS, ETC.	MTL.	FINISH
A	BELL No. 1A UNMOUNTED.	1	62933	—			
B	BELL GONG No. 2.	1	CD 254	—			
C	BELL GONG No. 2A	1	CD 254	—			
D	CASE No. 1	1	7276	—			
E	COIL INDUCTION No. 21.	1	9875	2	WD. SC. No. 4 x 3/8 RD. HD.	BR.	NIP. MATT.
F	CONDENSER M.C. No. 102.	2	9208	—			
G	GUARD, BELL HAMMER	1	62933	—			
H	LINK BRASS No. 6.	1	62689	—			
J	WASHER, LOCKING No. 1210	2	CD 338	—			
1	CLIP No. 20 MODIFIED	2	90173	2	WD. SC. No. 4 x 3/8 RD. HD.	BR.	NIP. MATT.
2/SLO/17		1	SLO/17	—			
2/SBR/5		4	SBR/5	4	WD. SC. No. 4 x 3/8 RD. HD.	BR.	NIP. MATT.
2/SST/63		1	SST/63	2	SC. 6 B. A. x 1/4 RD. HD.	"	"
1/SBR/2		2	SBR/2	2	SC. 6 B. A. x 1/4 CSK. HD.	"	"
3/SST/64		1	SST/64	2	SC. 6 B. A. x 1/4 RD. HD.	"	"



1. CLIP No. 20 MODIFIED. (DIVIDED IN HALF)

- NOTES:-
- FIGURE '9' OF ENGRAVING TO BE DELETED & 'E' SUBSTITUTED.
 - 4 WD. SC. No. 8 x 1 1/2 CSK. HD. IRON BLUED TO BE SUPPLIED WRAPPED IN PAPER AND TIED TO SET.

DO NOT SCALE
(A MICROFILM PROCESS PRINT)

FOR SUPERSED

BELL SET No. 23
(MK. 234)
FOR P.O. FACTORY
CONVERSION ONLY.