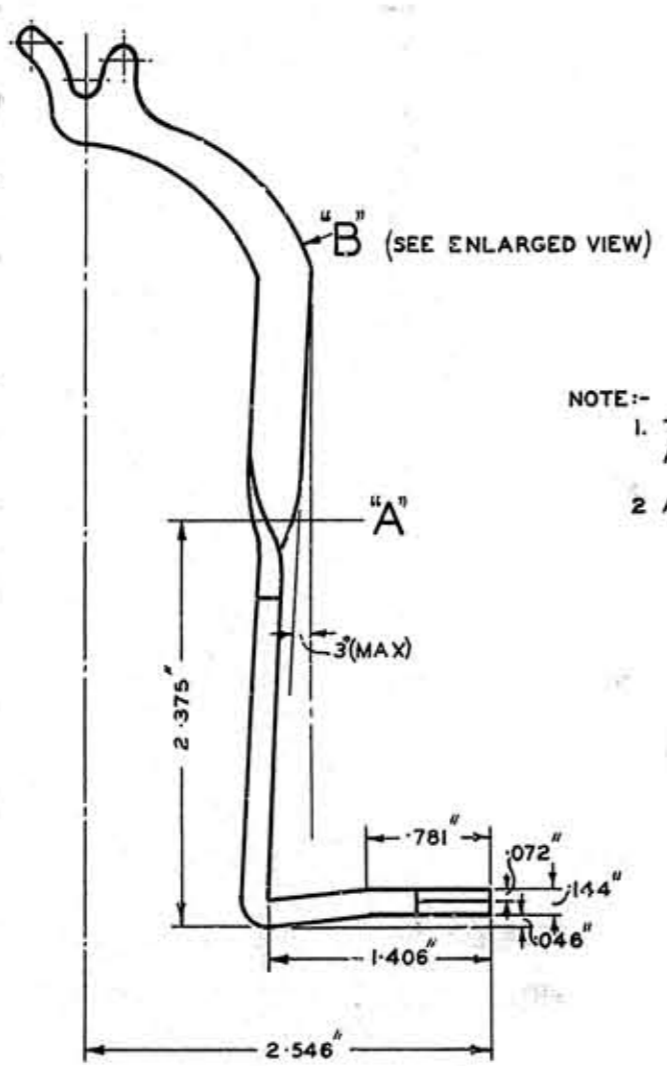
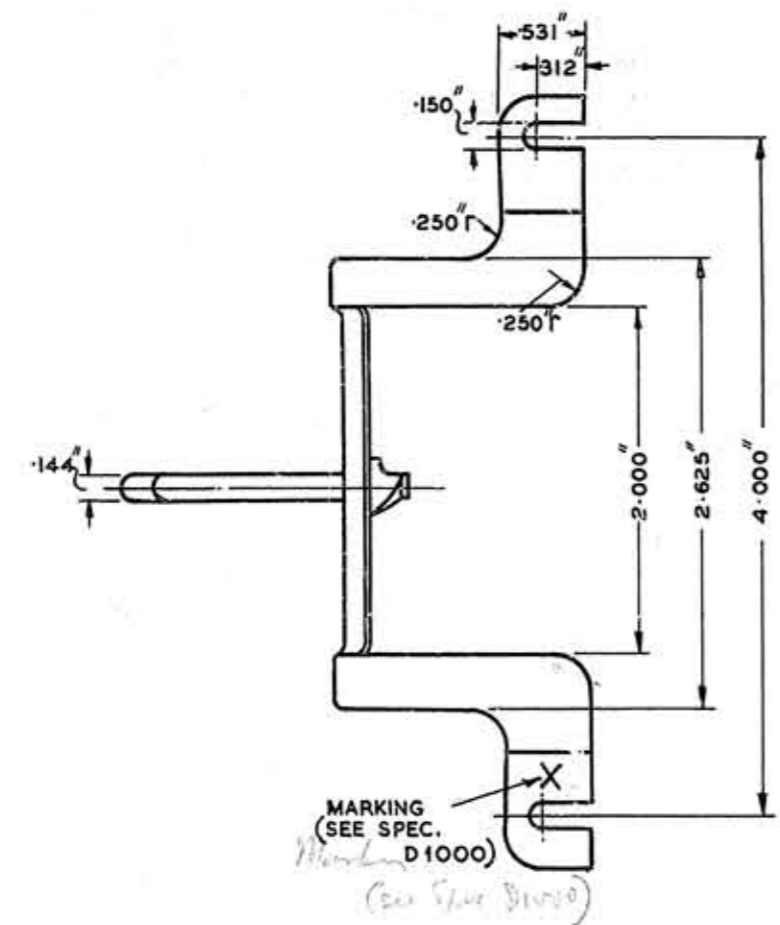


19 1/2 x 13"

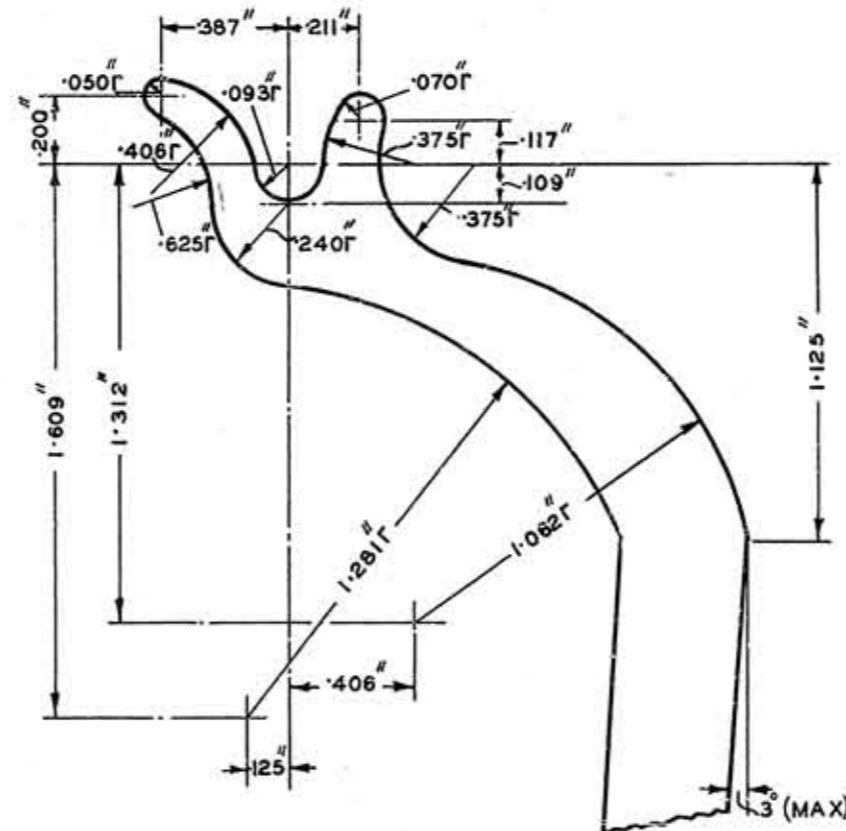
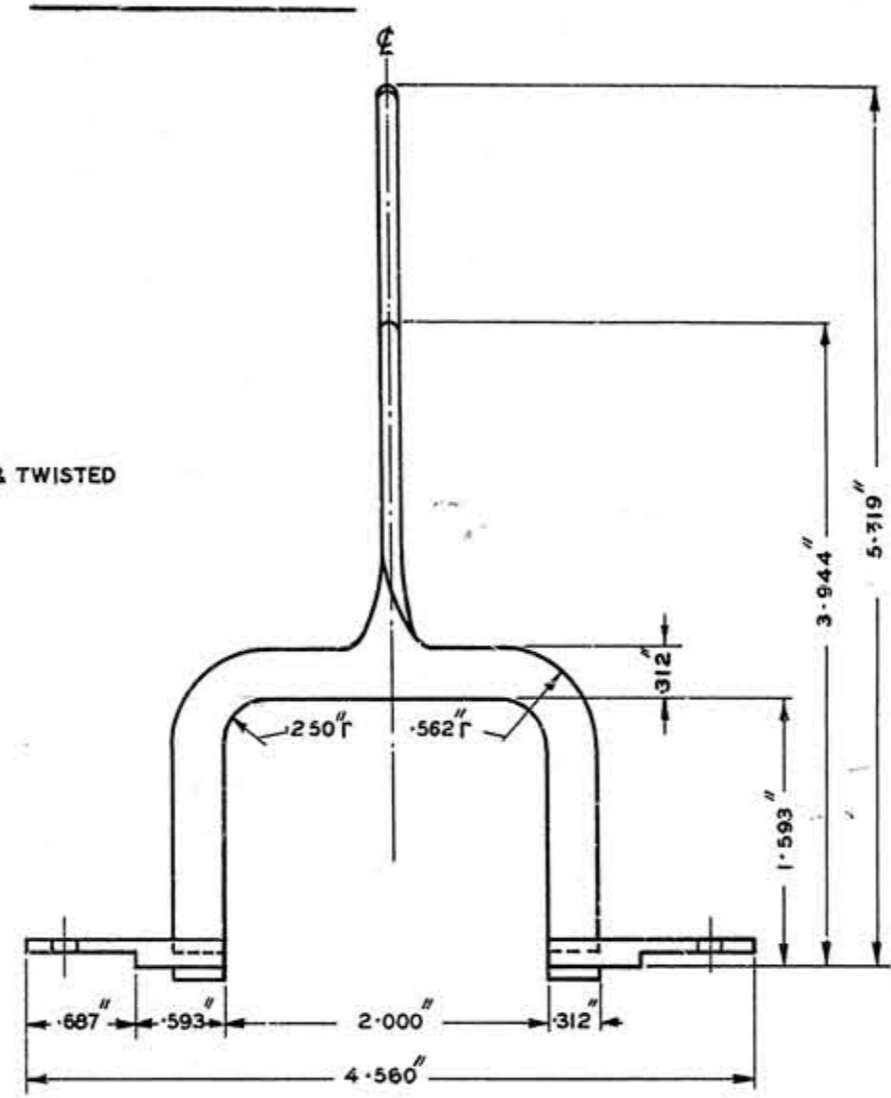
H 610-W 29,014 1000 12 35 Gp 923



NOTE:-
 1. TO BE BLANKED OUT IN ONE PIECE & TWISTED AT RIGHT ANGLES AT "A"
 2. ALL SHARP EDGES TO BE REMOVED



MATERIAL :- BRASS
 FINISH :- NICKEL FLASH, Cr.P. & POLISHED



ENLARGED VIEW AT "B"
 SCALE :- 2/1

E-in-C 211

TRIM TO THESE LINES 352

POST OFFICE ENGINEERING DEPT. ENGINEER-IN-CHIEF'S OFFICE.		
File Ref. ✓	D.O. R 42/1454	Date 26/10/37
Drawn. ✓	Traced. ✓	Checked. ✓
Appr'd <i>J. Madock</i> in S Branch		
Amendment.		Suffix.
NOTE 2 ADDED A 2/3581 <i>h.h. J.C.P.</i> 12.9.38		A
FINISH AMENDED. VERTICAL DIMENSION 5.319" WAS INCORRECTLY SHOWN AS 5.218". <i>h.h. J.C.P.</i> 17.5.51		B
10 & SUPERSESSION NOTE ADDED. <i>J.B. & W.S.</i> 17.6.58		C
SUPERSEDED FOR NEW WORK BY 62905/1		
D 1,000		
DRAWINGS	DIAGRAMS.	SPEC'NS.
HOOK, RECEIVER "X"		
SCALE :- 1/1 AND AS INDICATED		
DRG. 62,905/0		

MASTED