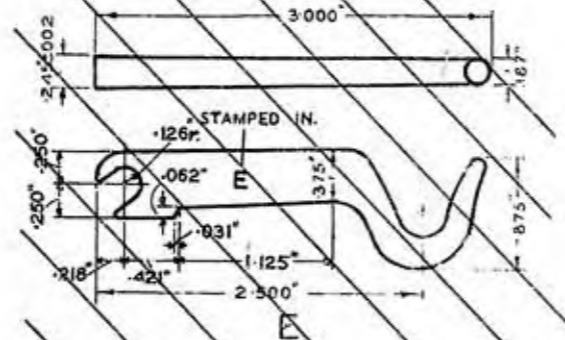
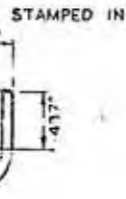
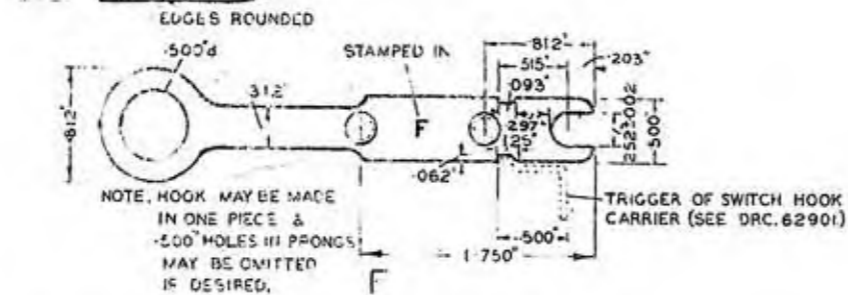
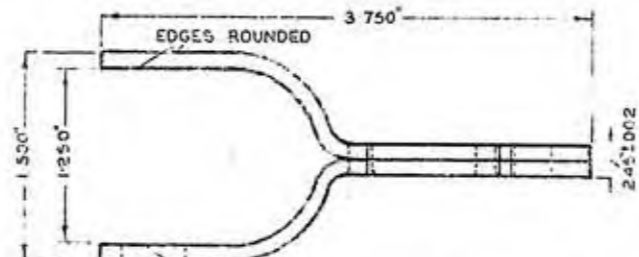


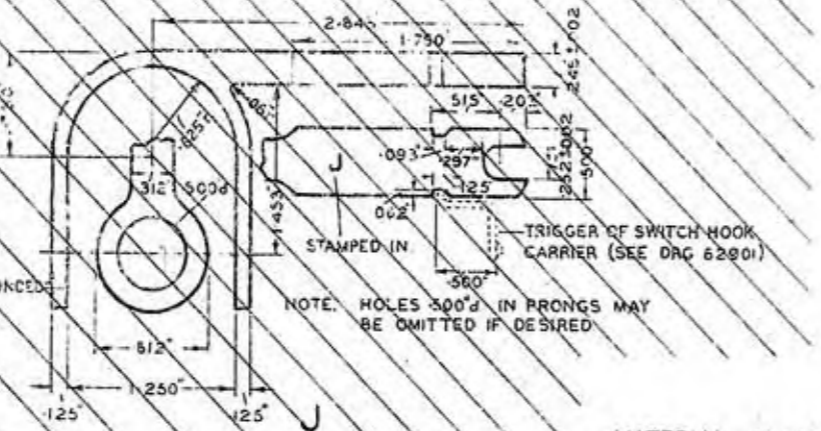
FOR TABLE TELE WITH GENERATOR (TELE. Nos 16 & 18)



FOR RECEIVER WATCH No. 1 ON INTERMEDIATE PANELS OF SWITCH SECTIONS (SW. RECEIVER TYPE 2 USED)

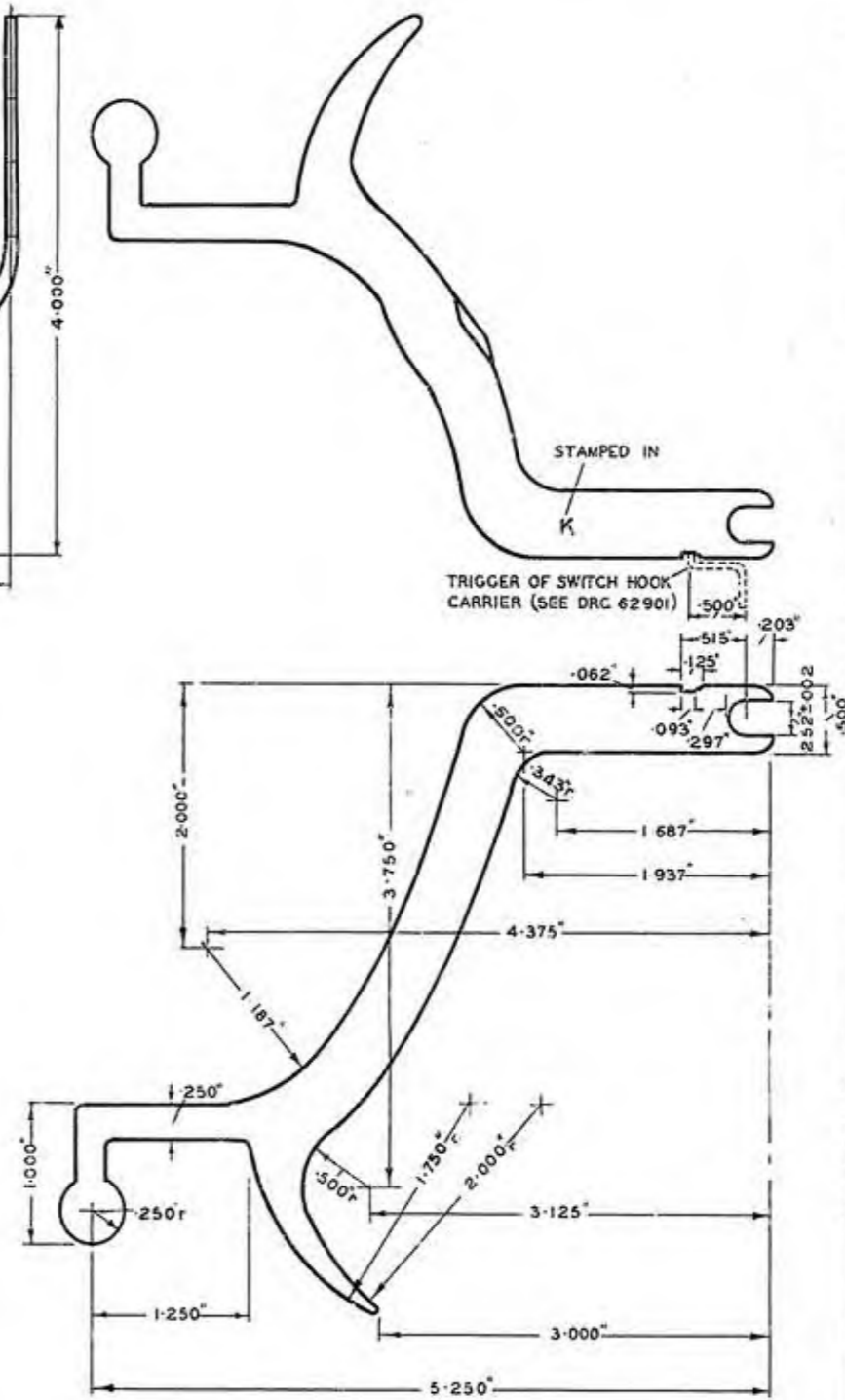
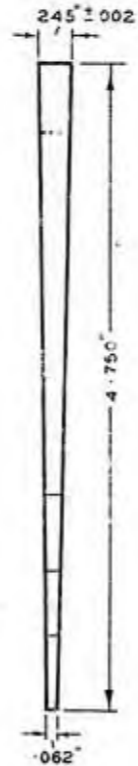
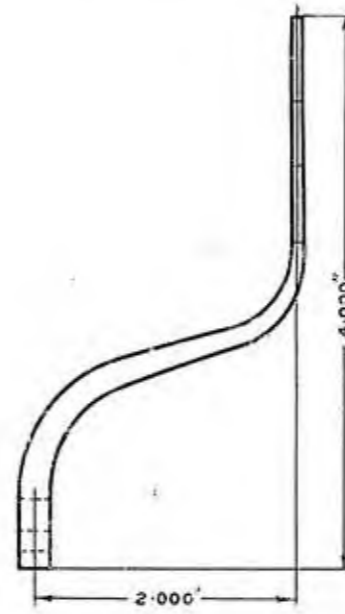


FOR USE WITH RECEIVERS BELL ON TELES Nos 1, 2, 3, 4, 10 & 11.

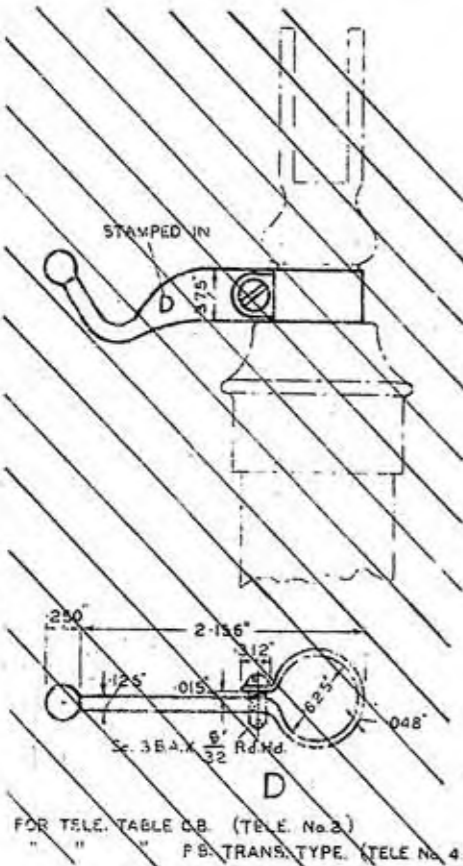


FOR USE WITH RECEIVER BELL ON TELE No. 33.

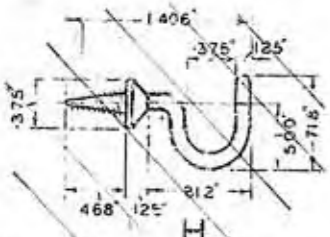
MATERIAL, BRASS
FINISH, Cp. Oxd. & Lnc



K



FOR TELE. TABLE CB. (TELE. No. 2)
FOR TRANS. TYPE. (TELE. No. 4)



FOR RECEIVER WATCH No. 1 ON WALL TELES. Nos 1, 3 & 11.

POST OFFICE TELECOMMUNICATIONS HEADQUARTERS		
FILE REF.	D.O. REF.	DATE, FEB. '09
DRAWN.	TRACED.	CHECKED.
W.J.J.	W.J.J.	L.P.
APPR'D C.T.P. IN TD 1/4 BRANCH.		
ORIGINAL SIGNED BY JOHN R GALL 22. 4. 21.		
AMENDMENT.	SUFFIX	
FORMERLY DRG 10015 HOOKS RECEIVER A B & G DELETED H.W. A2/2430 J.H.D. CP 4.7.38.		
REDRAWN NO AMENDMENT, A2/6291		
MATL. & FINISH ADDED. HOOK 'K' RAD. 1.750 WAS 1.375 DIM. 4.000 ADDED, 2.375 DELETED. A2/6964 DR. P.Z. 8-9-39		A
ITEM 'E' MODIFIED. PER DRG 6291		B
HOOK RECEIVER 'E' DELETED. S.C.P. 28.1.59		C
HOOK RECEIVER 'D' DELETED M.S. 11.2.74		D
HOOK RECEIVER 'J' DELETED. R.C. 21.5.62		E
HOOK RECEIVER 'H' DELETED S.S. 12.3.68		F
CANCELLED 12.10.73		
D. WHITAKER TD 2/3.1 12.10.73		
62901		D 1000
DRAWINGS.	DIAGRAMS	SPEC'NS
HOOKS, RECEIVER, C, D, E, F, H, J & K.		
SPECN.		
SCALE. 1/8"		
DRG 62,251		