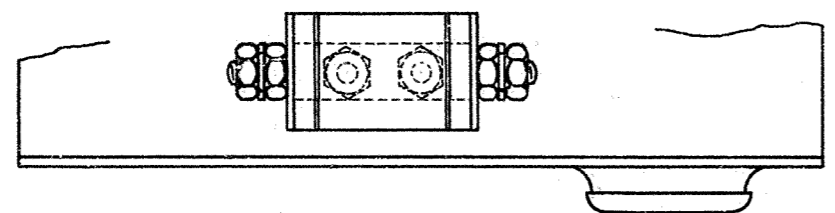
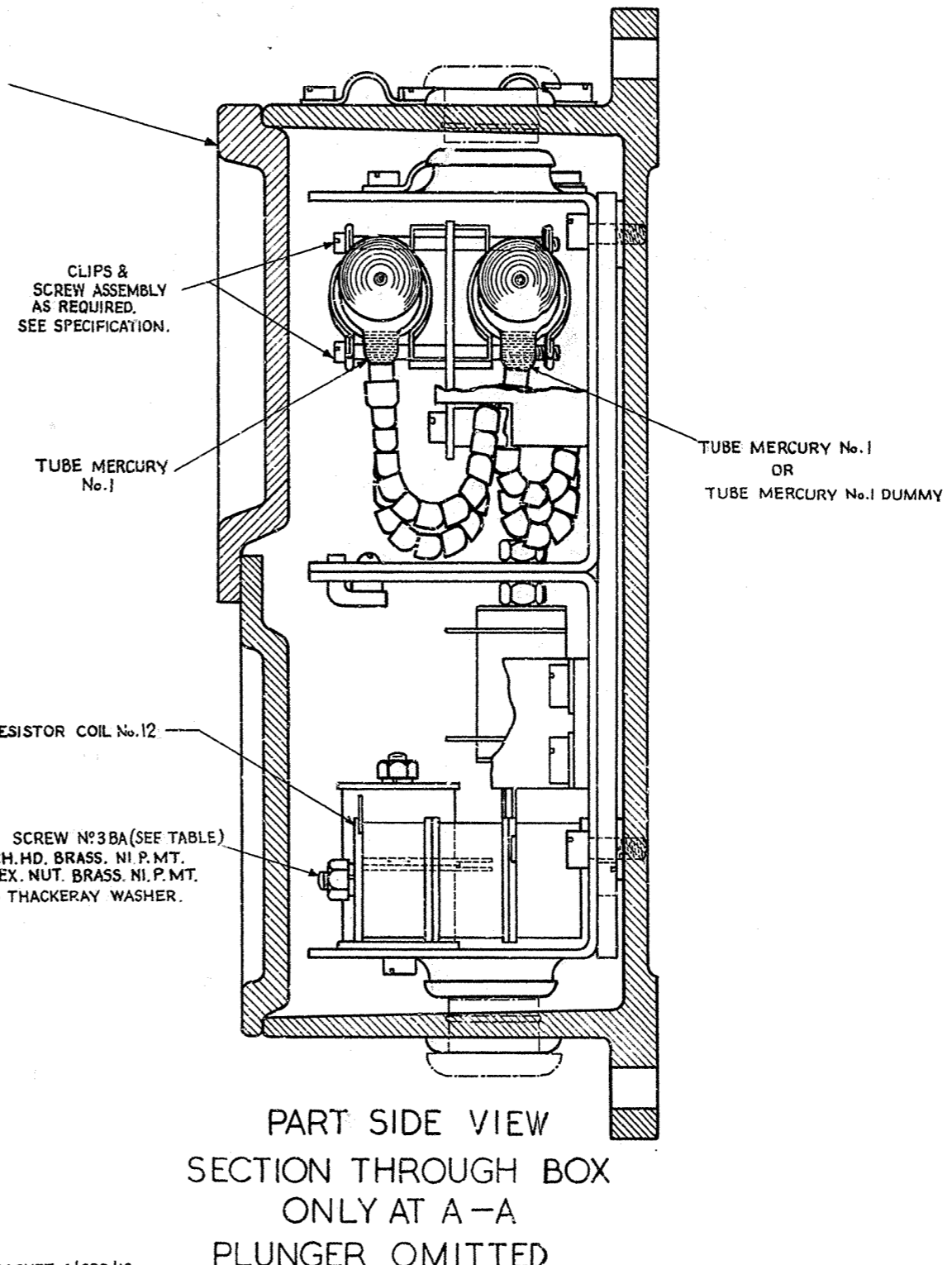
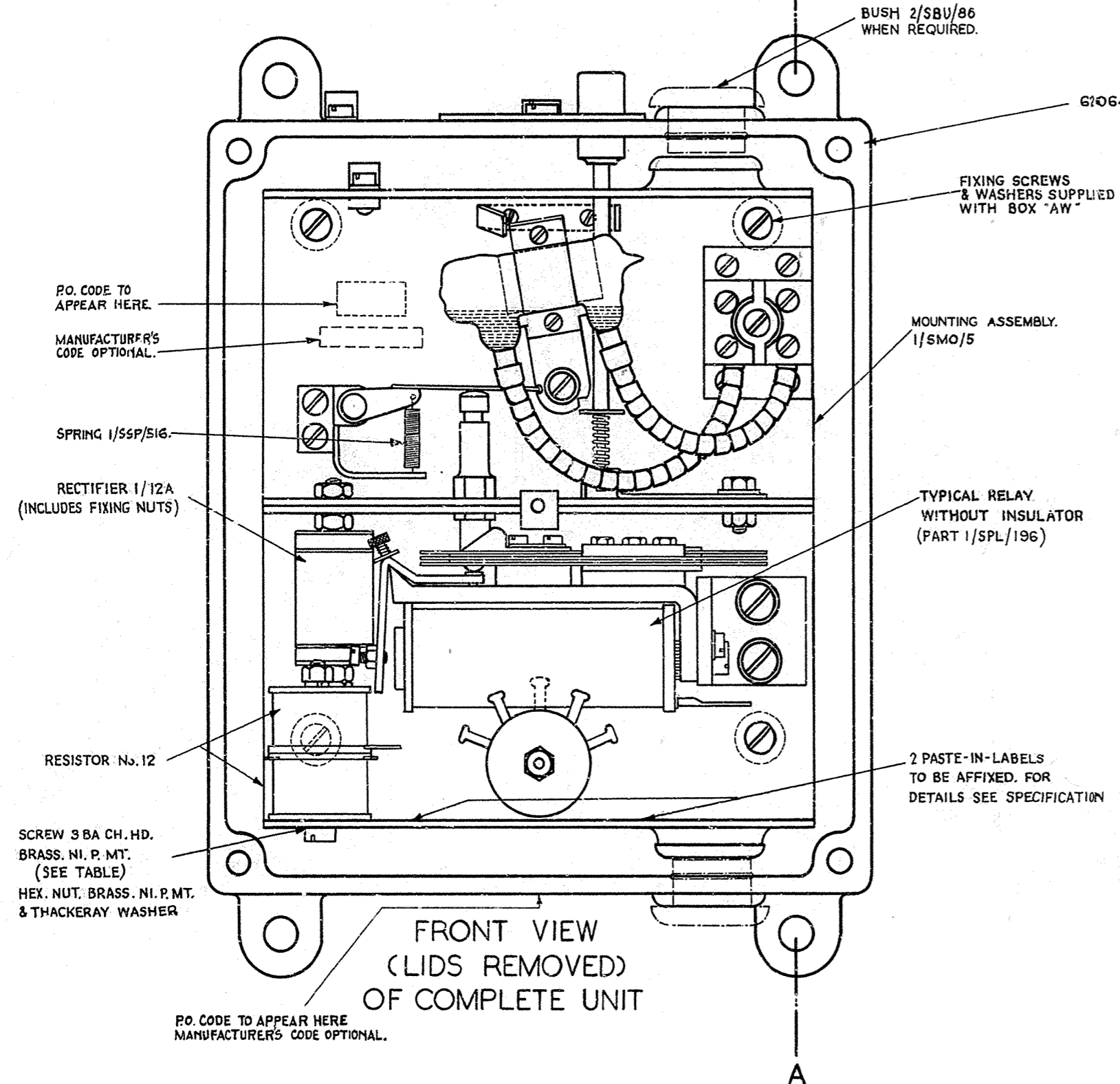
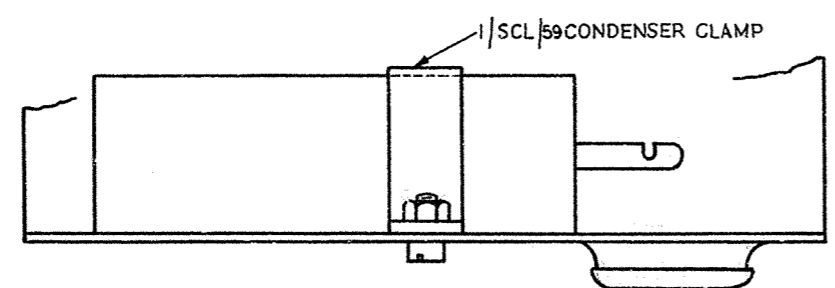
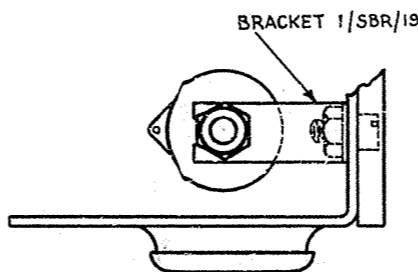


App'd *[Signature]* in TP Branch

Amendment.	Suffix.
TAGS ON RESISTORS WERE ON SAME ALIGNMENT. CODE MARKINGS CLARIFIED. EGM. 2702 237. 28-6-52	A.
BUSH & RING 1/SBU/86 DELETED. M.A. 26-2-58	B.
BUSH & RING 2/SBU/86.- NOTE ADDED. D.P. 27-5-58	C.



RECTIFIER FIXED IN LOWER POSITION



CONDENSER FIXED IN LOWER POSITION

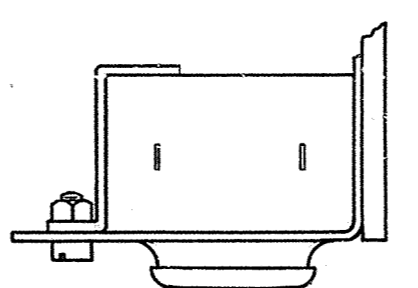
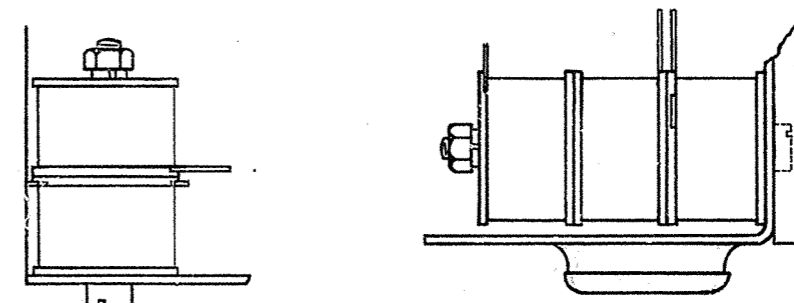


TABLE GIVING LENGTH OF FIXING SCREWS FOR ONE, TWO OR THREE RESISTORS

No. OF RESIST.	SCREW
1	3 BA x 1 1/8" CH. HD. BRASS. NI. P. MT.
2	3 BA x 1 1/2" CH. HD. BRASS. NI. P. MT.
3	3 BA x 2 1/8" CH. HD. BRASS. NI. P. MT.



ALTERNATIVE FIXING OF RESISTORS (SEE TABLE)

NOTES:  
 1. FOR MAKE-UP OF ANY PARTICULAR RELAY-SWITCH, SEE RELATIVE SPECIFICATION.  
 2. SEE TP. 631 FOR RELATIVE POSITIONS OF CONDENSER, RECTIFIER, & RESISTORS.

TYPICAL RELAY UNIT IN BOX Y5 (S)

T. 5252  
 DRAWINGS, DIAGRAMS, SPEC'NS.

RELAY-SWITCHES  
 TYPES 3100. 3200. 3400. 3500.  
 3800. 3900.  
 (MARK 1A)  
 WITH RELAY-COVER AW  
 TYPICAL ASSEMBLY

SCALE: -+  
 DRG. 62066