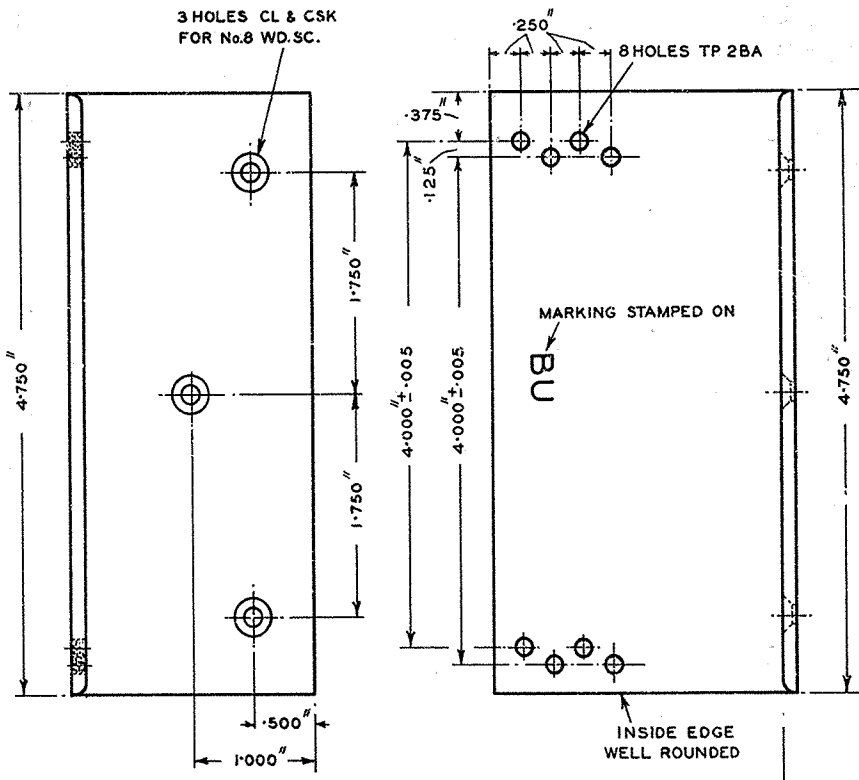


TRIM TO THESE LINES.

13 x 8"

E-IN-C. 438.  
MASTER

POST OFFICE ENGINEERING DEPT. ENGR-IN-CHIEF'S OFFICE			DRG. 62011	
BRACKET MTG. BU			SPECN. -	
			SCALE: - 1/1	
			DATE: 2.12.37	
DRAWN: <i>J.K.</i>	D.O. REF. A2/1753	APPR'D BY: <i>J. Maddock</i>		
TRACED: <i>J.K.</i>	FILE REF. S 1361/BU	IN. S. BRANCH.		
CHECKED: <i>J.K.</i>				
DRG'S.	DIAGS.	SPECNS.	AMENDMENT.	
			LENGTH OF BRACKET REDUCED, HOLES WERE CL. FOR 3BA. & NOTE RE SCREWS ADDED. A2/1966 <i>J.K. C.P. 24.2.38</i>	
			HOLES TP 2BA WERE CL. FOR 2BA. FINISH FOR 2BA SCREWS WAS NOT SHOWN. A2/3070 <i>J.K. C.P. 19.8.38</i>	
	D 658		2 HOLES TP. 2 B.A. ADDED <i>J.K. A2/4641 / P.I. 14-11-38</i>	
	D.1000		FINISH - PARKERIZED, ETC. DELETED REF. TO SPEC. D658 ADDED. FILE REF. UPDATED <i>m.s. 2/18/37</i> 29.10.63	
			SUFFIX.	
			A	
			B	
			C	
			D	



**MATERIAL** MILD STEEL DEAD SMOOTH

**FINISH** TO SPEC. D658 CLAUSE 3.2  
ALL EDGES & CORNERS TO BE SMOOTH, TAPPED HOLES TO BE FREE OF ENAMEL

INSIDE EDGES WELL ROUNDED

3 Wd. Scs. No. 8 x 7/8" Csk. Hd. M.S. Cpr. Oxd. &  
2 Scs. 2 B.A. x 5/16" Csk. Hd M.S. Cpr Oxd TO BE SUPPLIED WRAPPED IN PAPER & SECURELY TIED TO BRACKET.