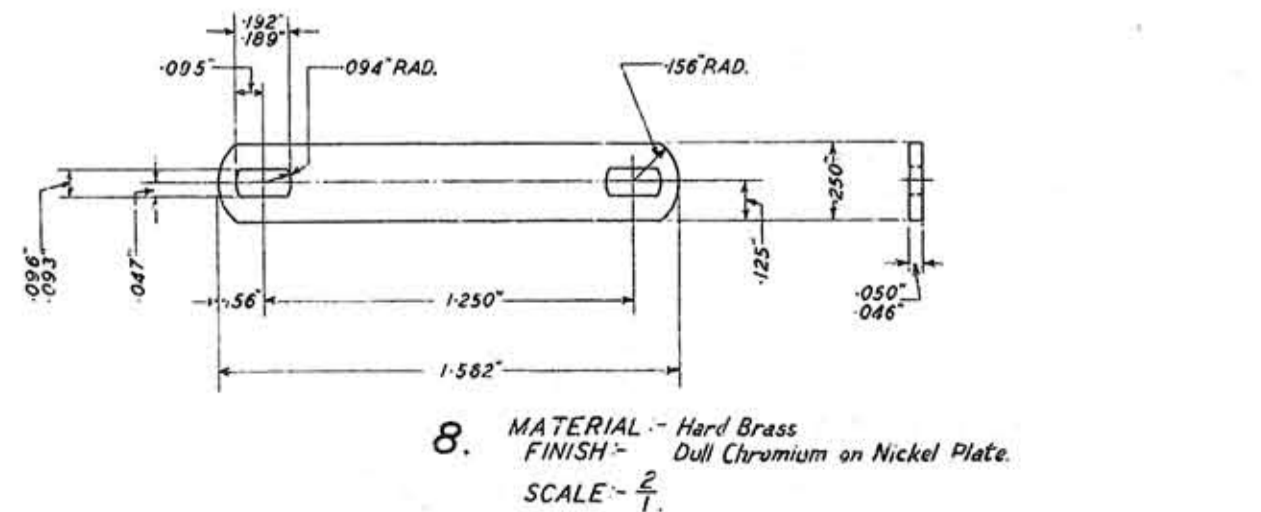
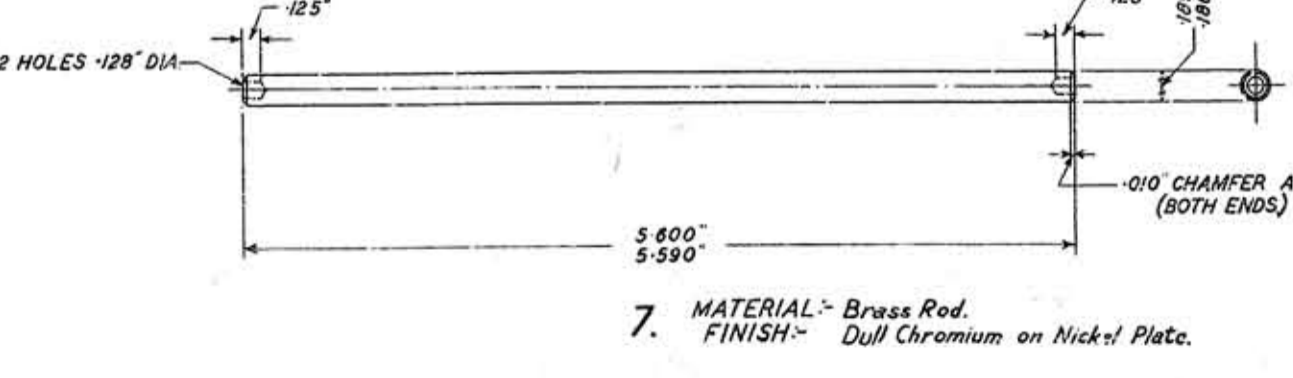
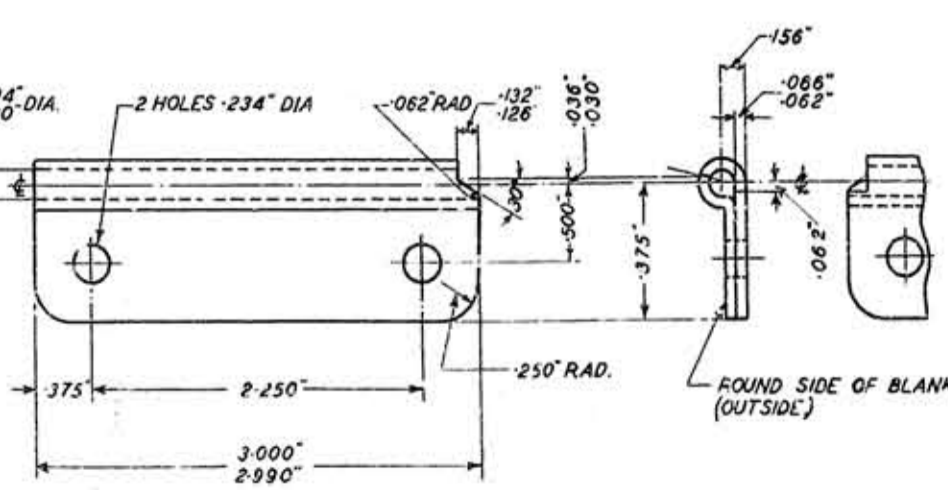
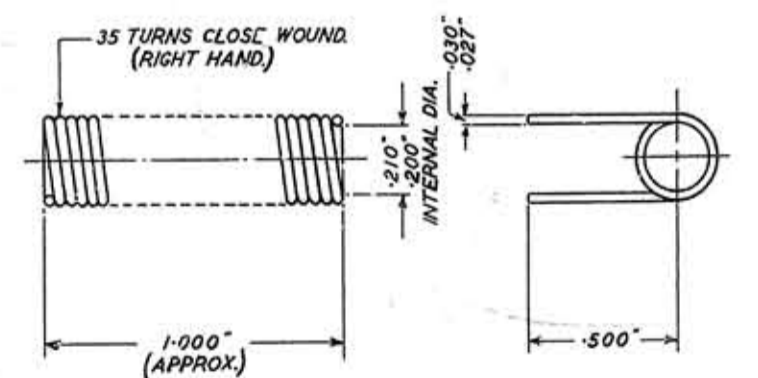
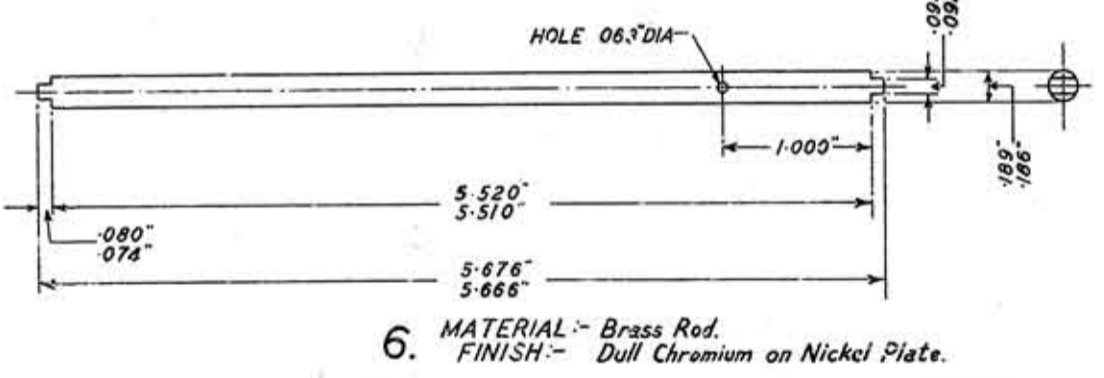
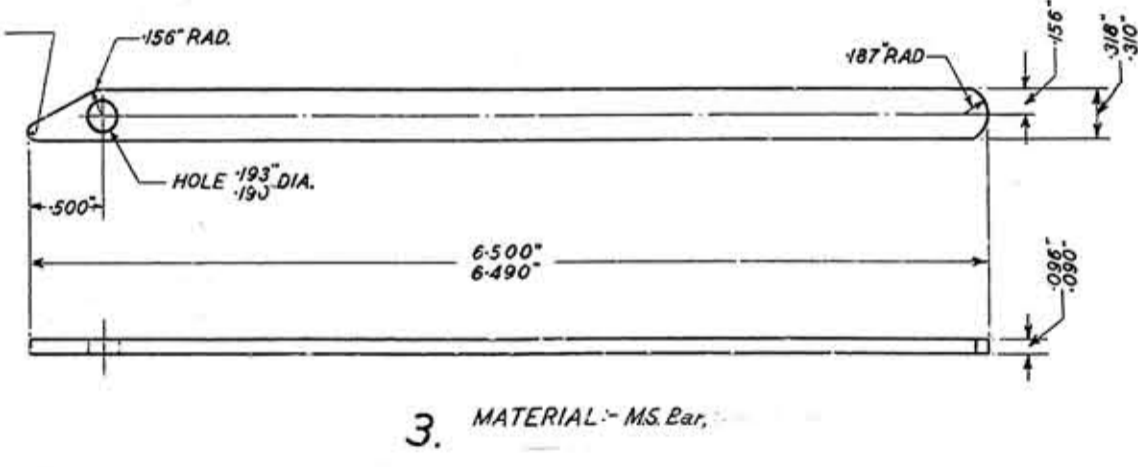
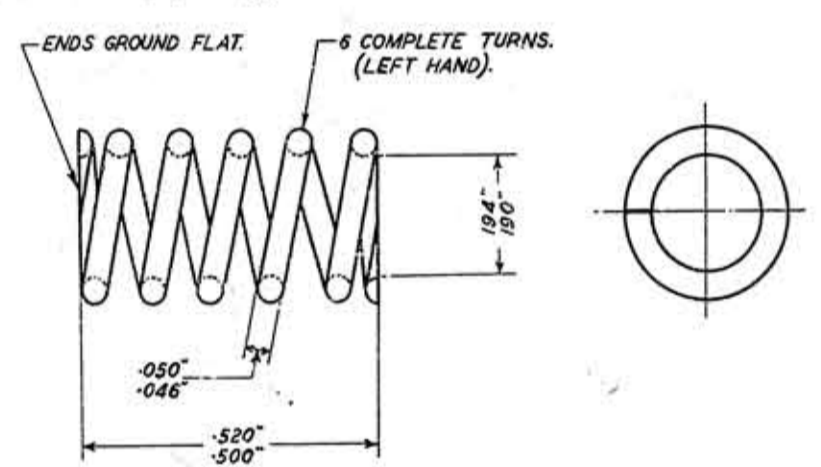
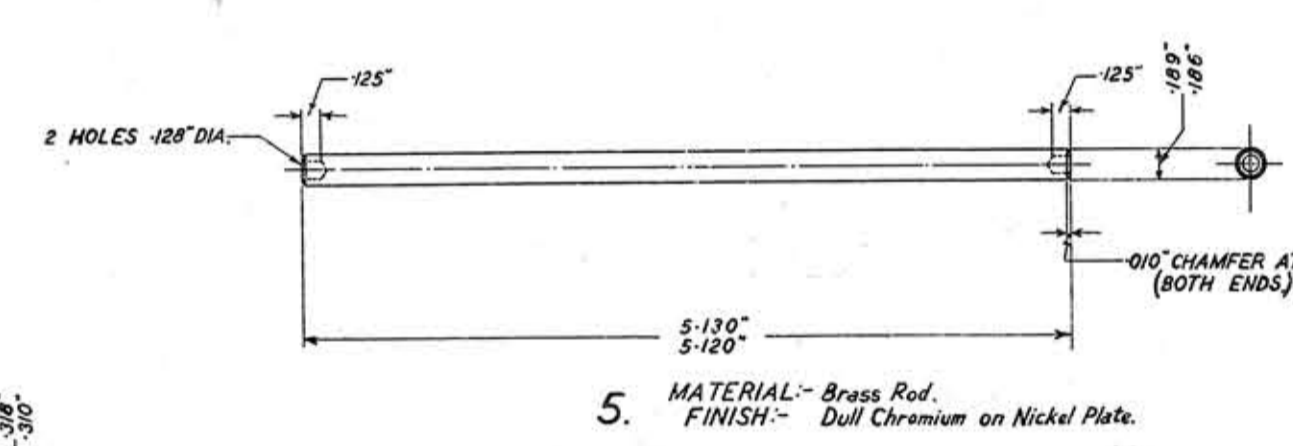
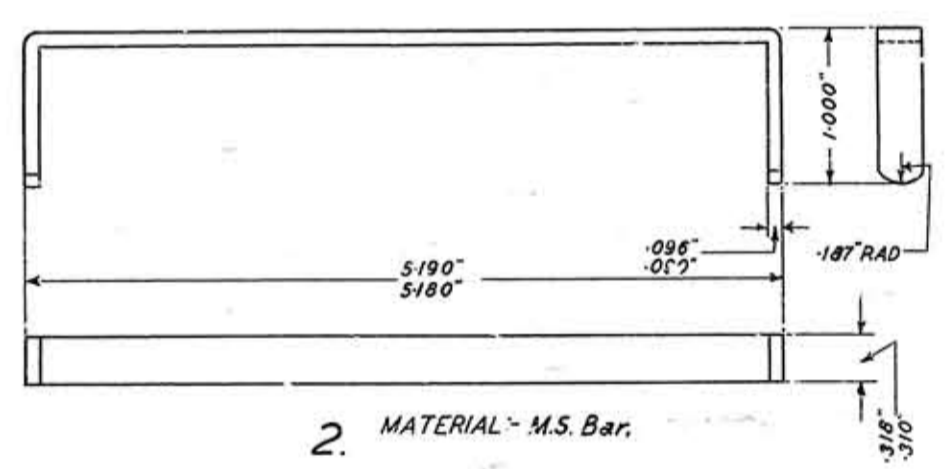
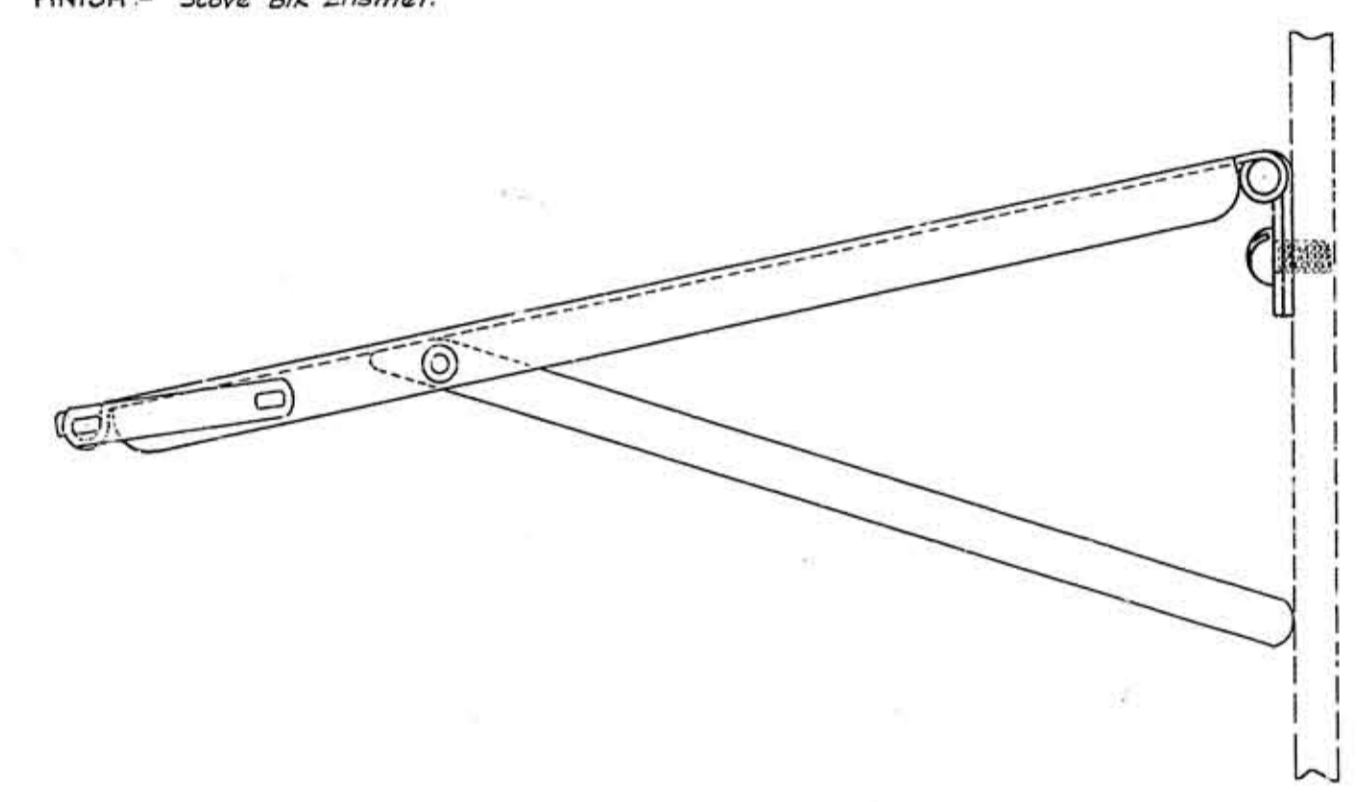
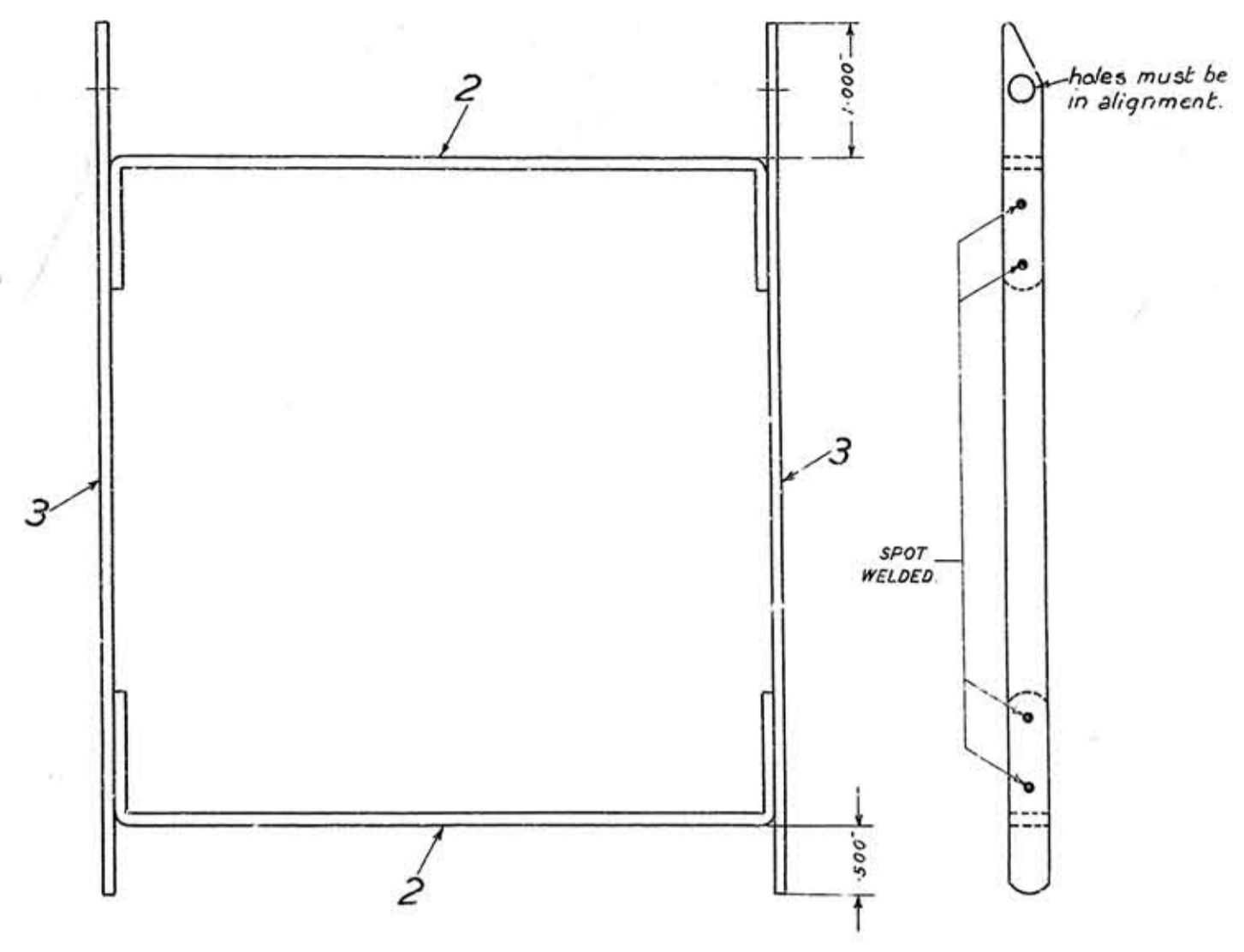
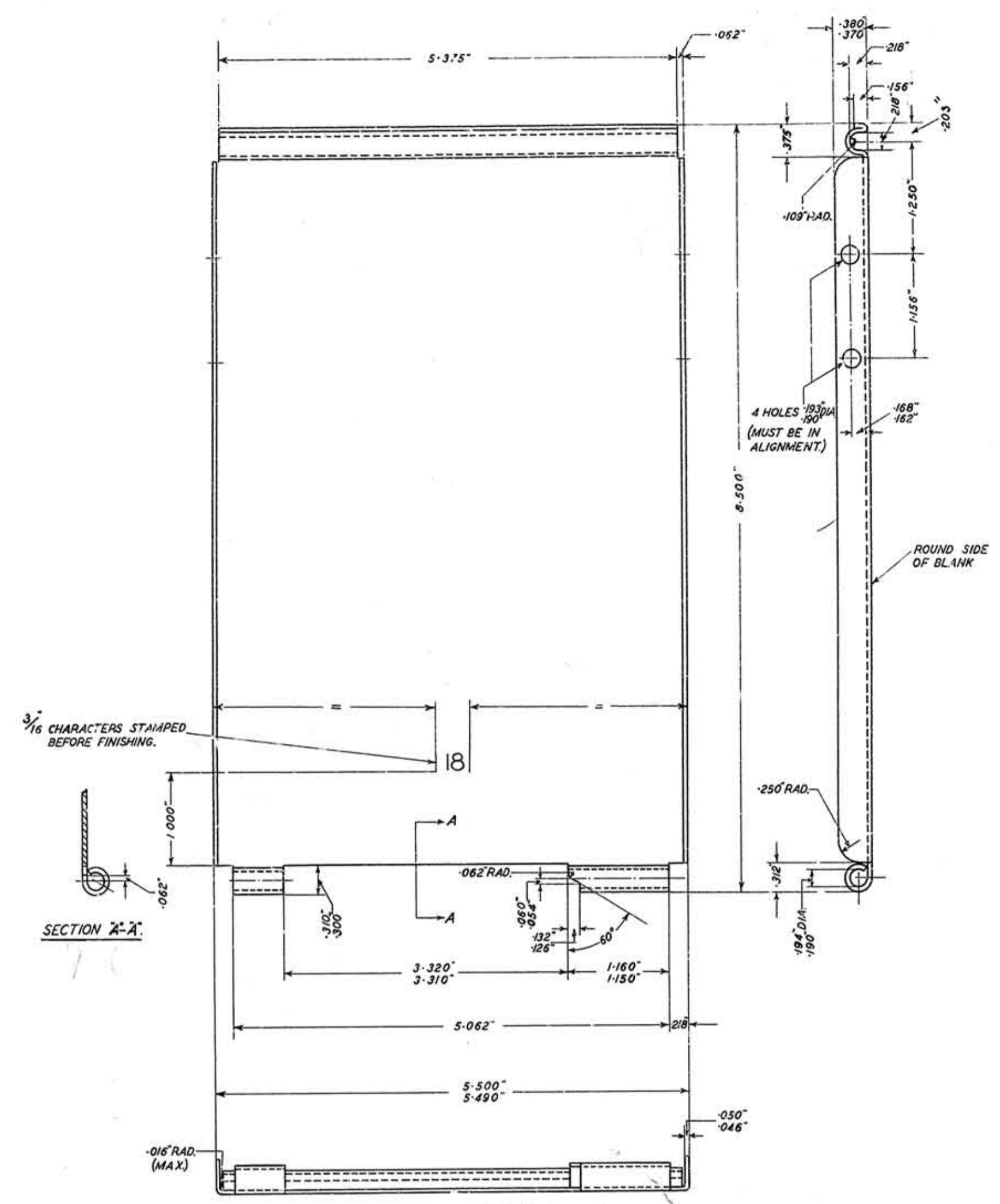
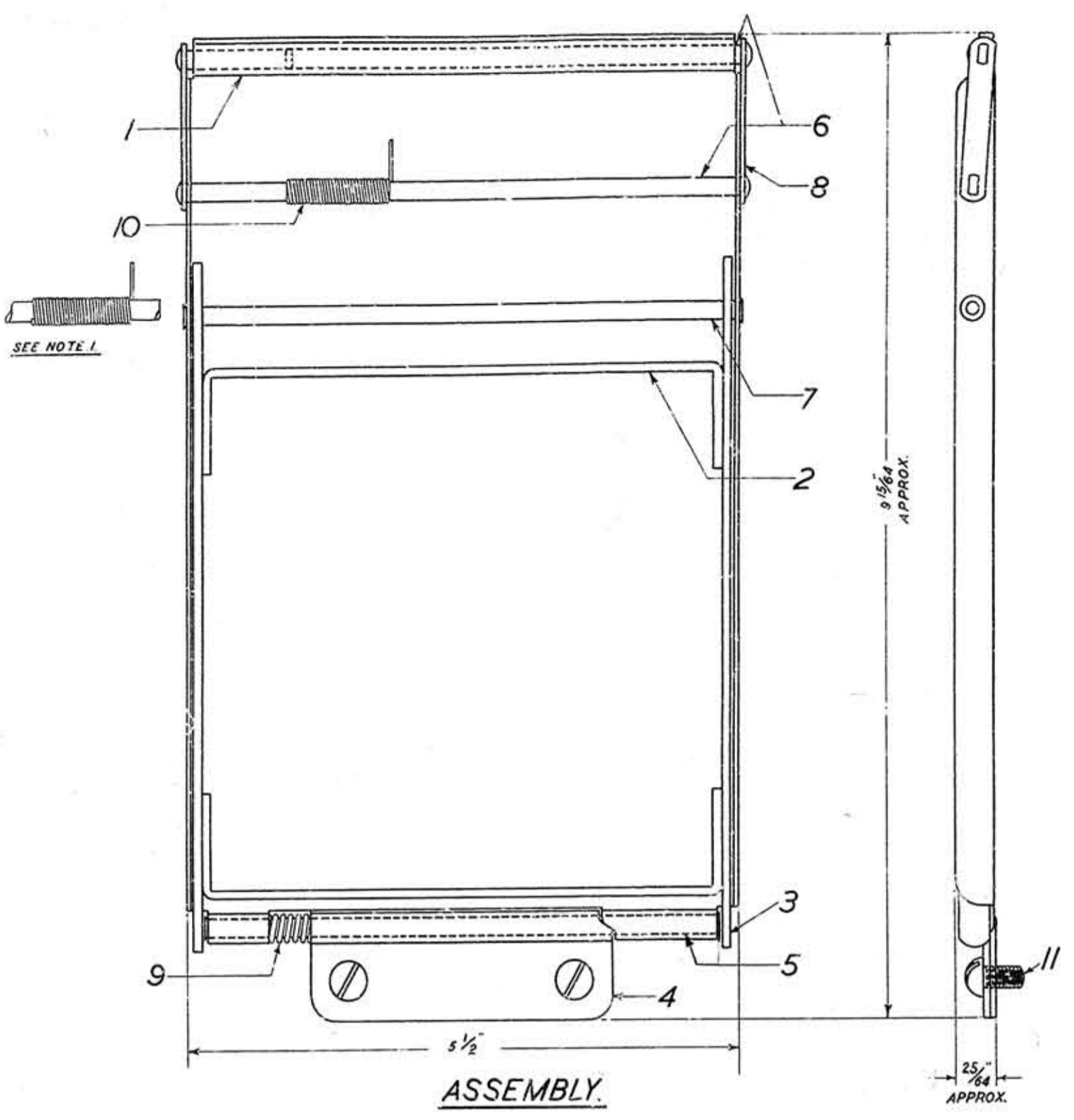


FIRST OFFICE ENGINEERING DEPT.			
ENGINEER-IN-CHIEF'S OFFICE			
DATE	20-9-30	DATE	20-9-30
DESIGN	1206/52	DATE	20-9-30
DESIGNED BY	W. H. W.	CHECKED BY	W. H. W.
APPROVED BY	W. H. W.	IN	S Branch
Amendment.			
In assembly 23 approx was 28.			
Material for Det 10 was .028" d.			
1.7. Add. Q. 11.24.1.40			
A			



- NOTES -**
1. Before riveting parts No.8 in place, end of spring part No.10 to be bent over and taken through hole in part No.6 as shown. Spring to be wound up so that the assembly will be always under tension.
  2. Ends of parts No.5 & No.7 to be swaged over.
  3. Stay to be free to fall by its own weight.
  4. Step on hinge to be lubricated with suitable grease.

SCHEDULE		
ITEM.	DESCRIPTION.	QTY.
1	Shelf.	1
2	Strap.	2
3	Strip.	2
4	Bracket.	1
5	Spindle.	1
6	Rod.	2
7	Spindle.	1
8	Strap.	2
9	Spring (Spiral).	1
10	Spring (Spiral).	1

ITEM	QTY	SCREWS	MAT'L	FINISH
11	2	2 BA x 3/8" Rd. Hd.	M.S.	Cadmium Plate.

To be wrapped and securely tied on.

D 1000

DRAWINGS/DIAGRAMS SPEC'NS

DESK, No. 18,

SPEC'N

SCALE - f & g as indicated

DRG. 61540