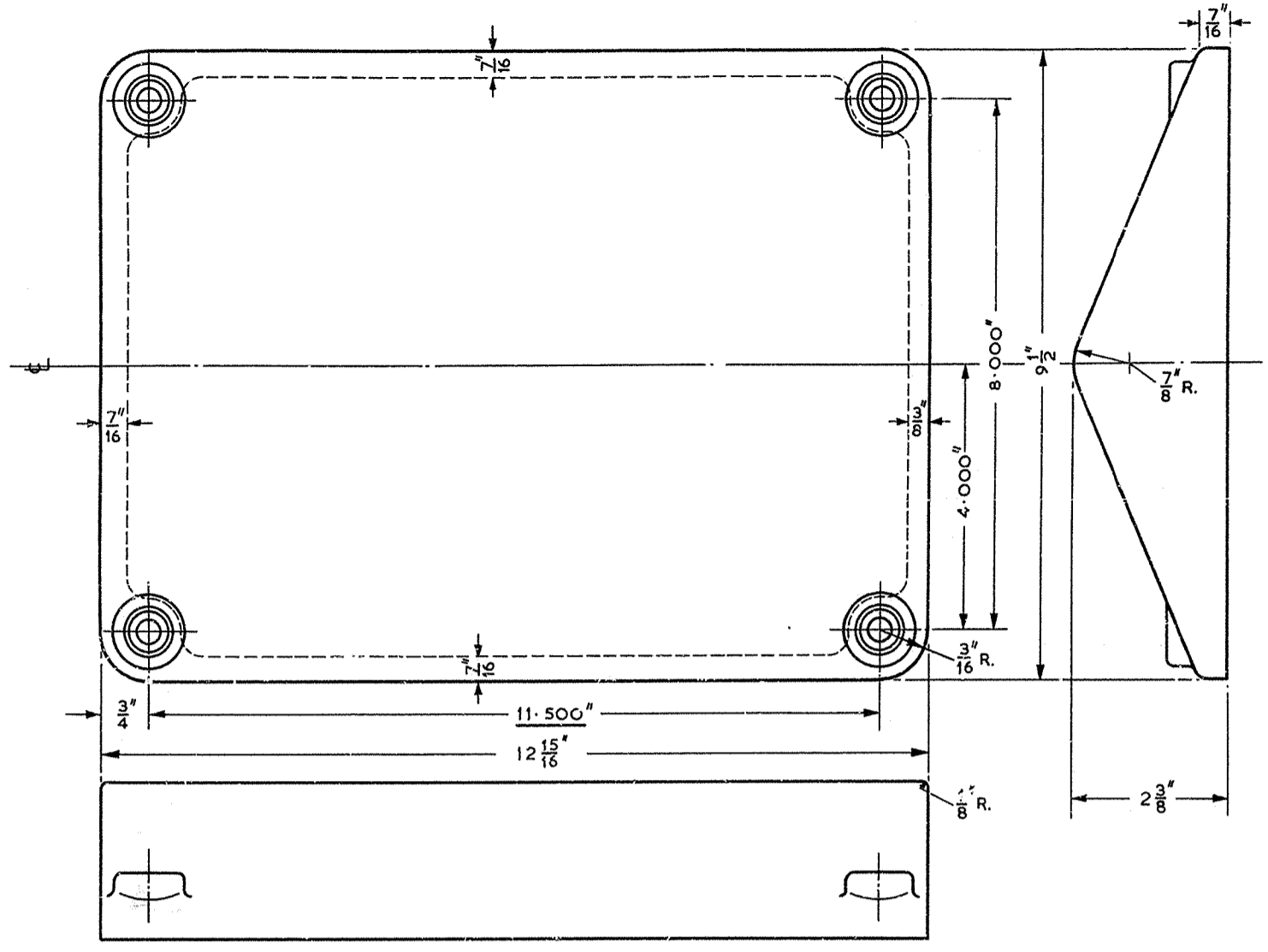


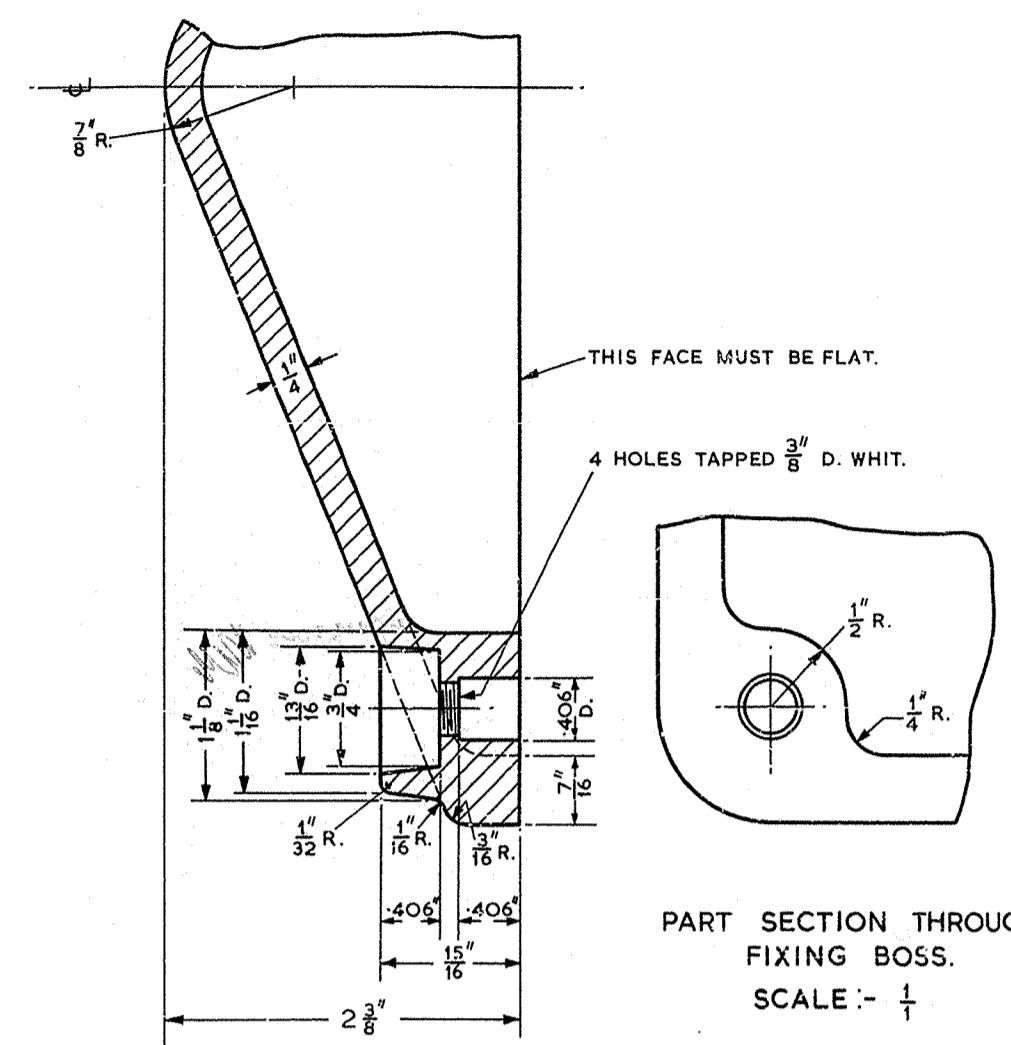
DRG 61536

POST OFFICE ENGINEERING DEPT	
S BRANCH	
DISTRIBUTION GENERAL	
REFERENCES	
DRG 61533	SPEC. M 252
61535	M 271
ASSEMBLY LRG.	WIRING DGM
61533	
FILE POST 1206/32	SPEC. D 1175
SCALE	AND AS INDICATED
DECIMAL DIMENSIONS NOT TOLERANCED	ANGLE PROJECTION
SUBJECT TO	
APP'D IN S SECTION	DRN H.C.W.
F.J.J.	TCD H.C.W.
F. REID.	CKD. E.A.C. W.S.A.
DATE 29.9.36	
AMENDMENT	
FINISH WAS SINGLE COAT OF GREY LEAD PRIMING PAINT (P.O. SPEC. M 252) G.J.C. E.A.C. E.C. 25.11.54. E	
RETRACTED. NO AMENDMENT S.P.S. 3.2.53	

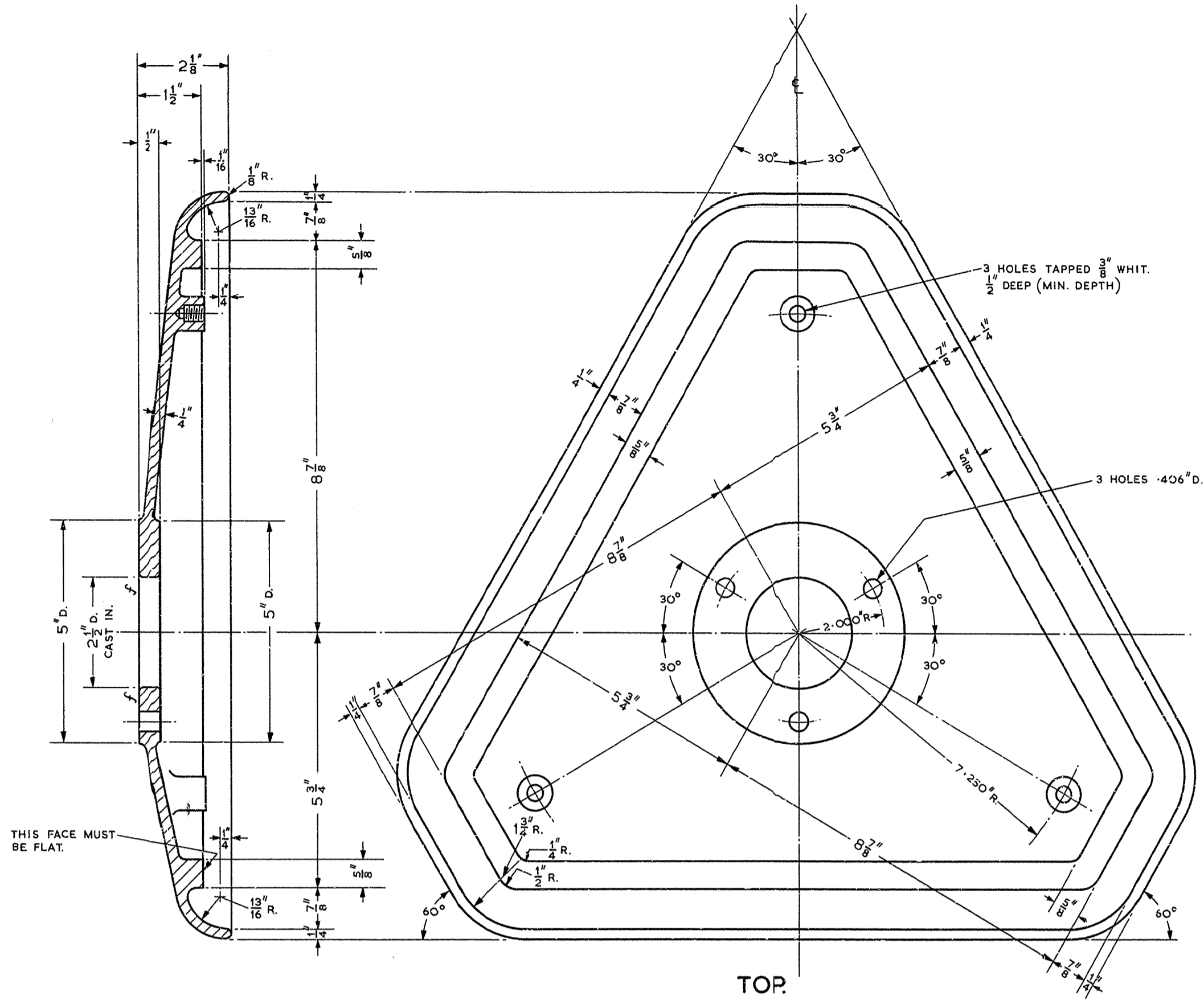


COVER (MAINS SUPPLY POINT)

SCALE:-  $\frac{1}{4}$   
 2. MATERIAL:- CAST IRON.  
 FINISH:- (a) ZINC SPRAY FOLLOWED BY ONE COAT OF ZINC CHROMATE PRIMING PAINT (P.O. SPEC. M 259) OR  
 (b) ONE COAT OF RED LEAD PRIMING PAINT (P.O. SPEC. M 267) FOLLOWED BY ONE COAT OF GOOD QUALITY ALUMINIUM PAINT (P.O. SPEC. M 252) AN ADDITIONAL COAT OF FINISHING PAINT (P.O. SPEC. M 271) ON INSIDE.

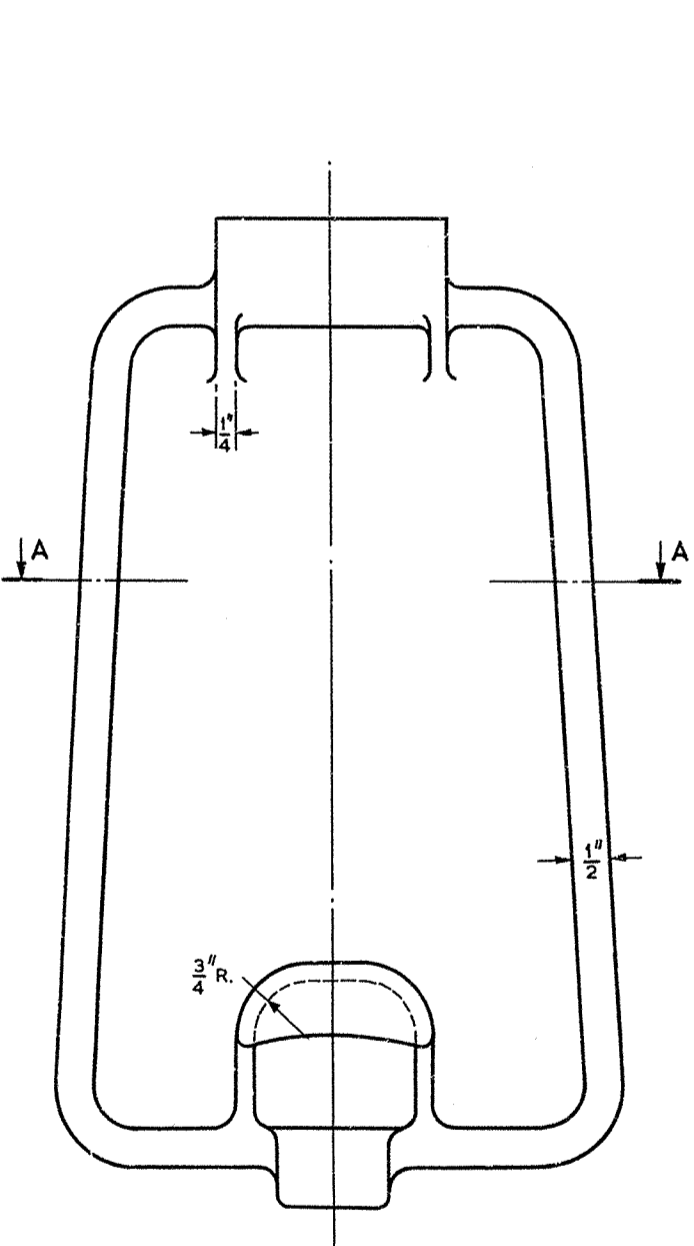


PART SECTION THROUGH FIXING BOSS. SCALE:-  $\frac{1}{1}$

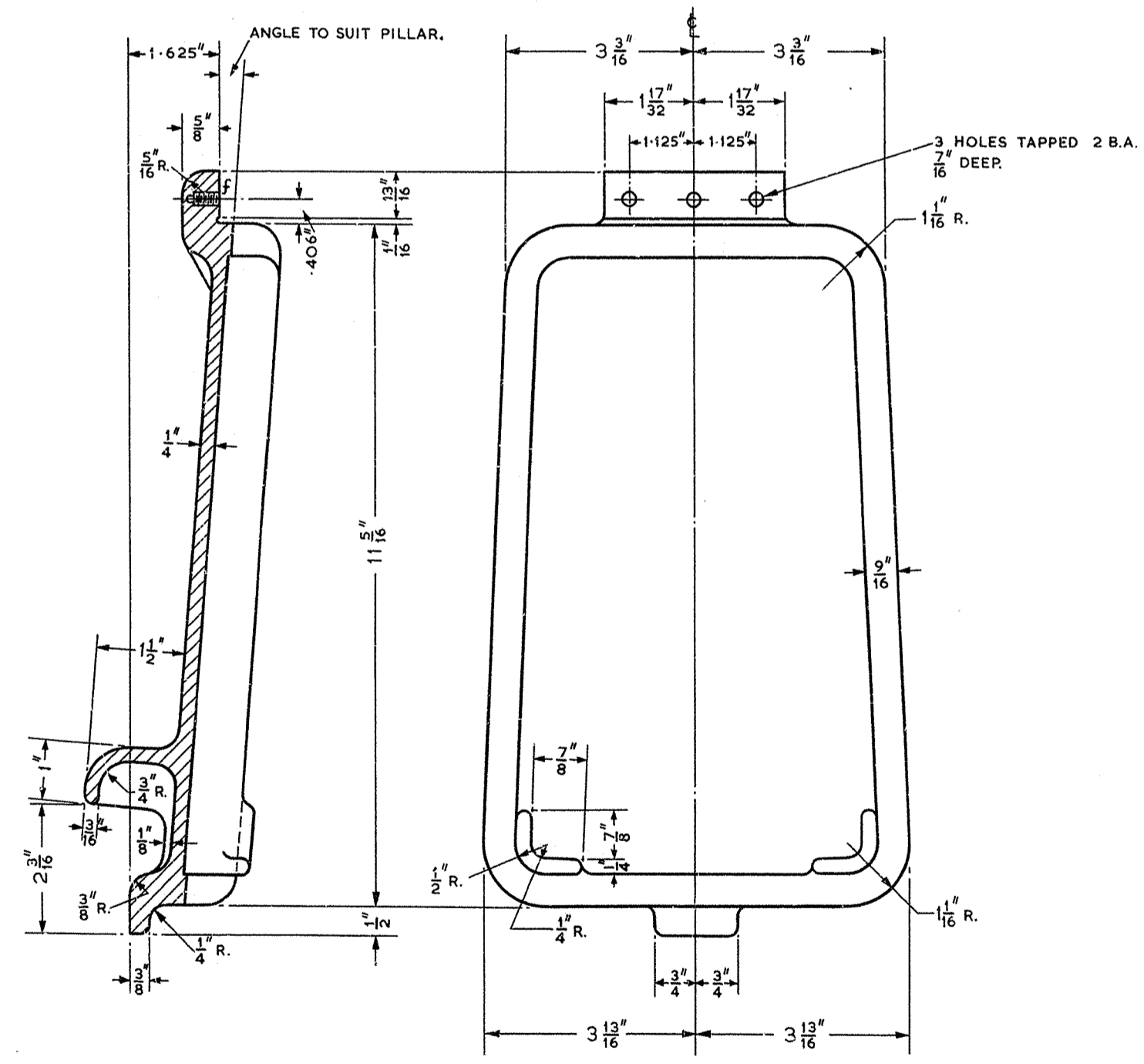


TOP

SCALE:-  $\frac{1}{2}$   
 5. MATERIAL:- CAST IRON.  
 FINISH:- (a) ZINC SPRAY FOLLOWED BY ONE COAT OF ZINC CHROMATE PRIMING PAINT (P.O. SPEC. M 259) OR  
 (b) ONE COAT OF RED LEAD PRIMING PAINT (P.O. SPEC. M 267) FOLLOWED BY ONE COAT OF GOOD QUALITY ALUMINIUM PAINT (P.O. SPEC. M 252) AN ADDITIONAL COAT OF FINISHING PAINT (P.O. SPEC. M 271) ON INSIDE.

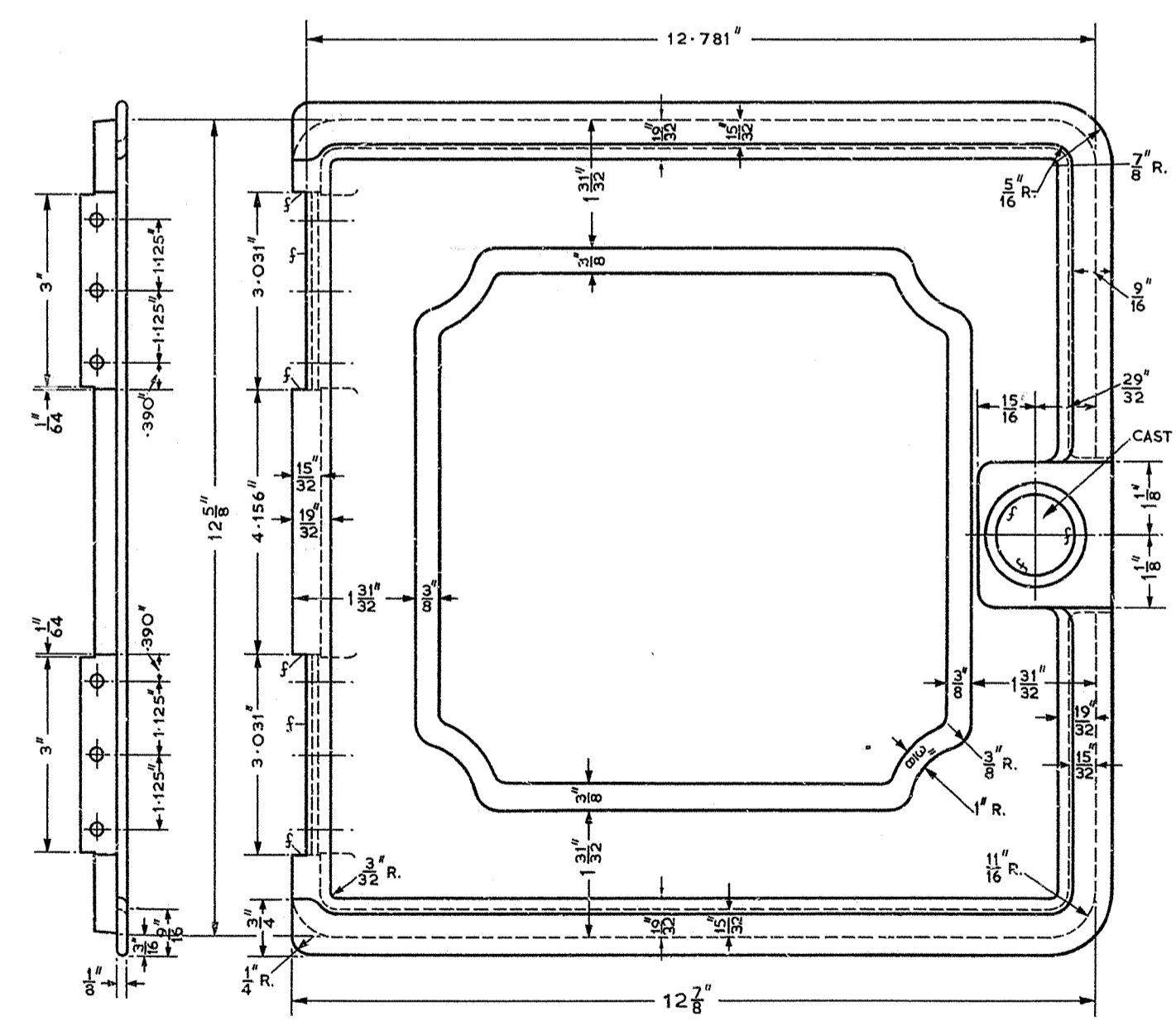


SECTION A-A.



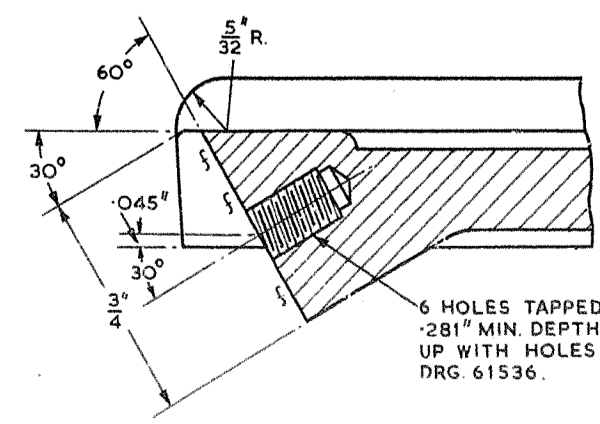
DOOR (FIRST AID)

SCALE:-  $\frac{1}{2}$   
 3. MATERIAL:- CAST ALUMINIUM  
 FINISH:- ONE COAT OF ETCH PRIMER (SERVICES SPEC. DTD. 869) FOLLOWED BY ONE COAT OF RED OXIDE/ ZINC CHROME PRIMER (SERVICES SPEC. D.E.F. 1035) AN ADDITIONAL COAT OF FINISHING PAINT (P.O. SPEC. M 271) ON INSIDE & SEATINGS.

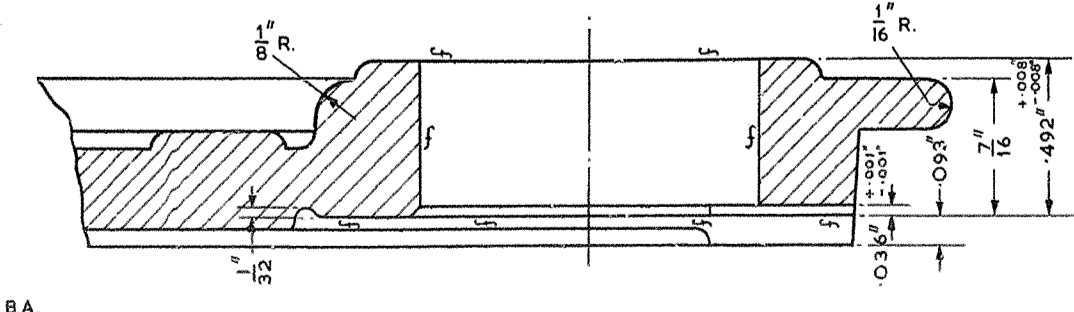


DOOR (POLICE)

SCALE:-  $\frac{1}{16}$   
 6. MATERIAL:- CAST IRON.  
 FINISH:- (a) ZINC SPRAY FOLLOWED BY ONE COAT OF ZINC CHROMATE PRIMING PAINT (P.O. SPEC. M 259) OR  
 (b) ONE COAT OF RED LEAD PRIMING PAINT (P.O. SPEC. M 267) FOLLOWED BY ONE COAT OF GOOD QUALITY ALUMINIUM PAINT (P.O. SPEC. M 252) AN ADDITIONAL COAT OF FINISHING PAINT (P.O. SPEC. M 271) ON INSIDE & SEATINGS.



ENLARGED VIEW OF HINGE DRILLING.



ENLARGED VIEW OF LOCK FIXING BOSS.

NOTE:- f REMOTES MACHINED SURFACES.

FOR SUPERSUED

POST. P.A. No. 1.

DETAILS 2, 3, 5 & 6.

DRG 61536