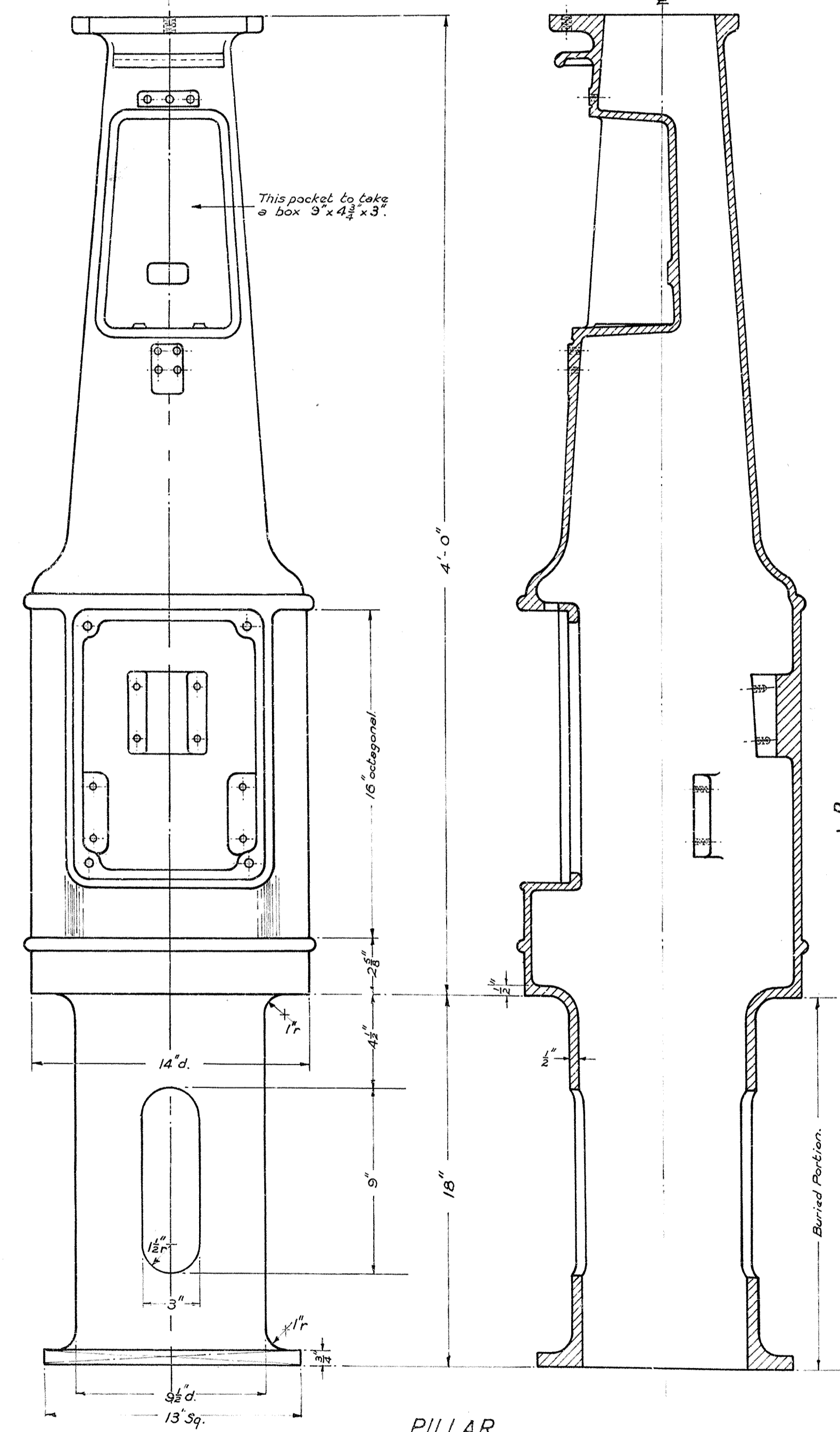
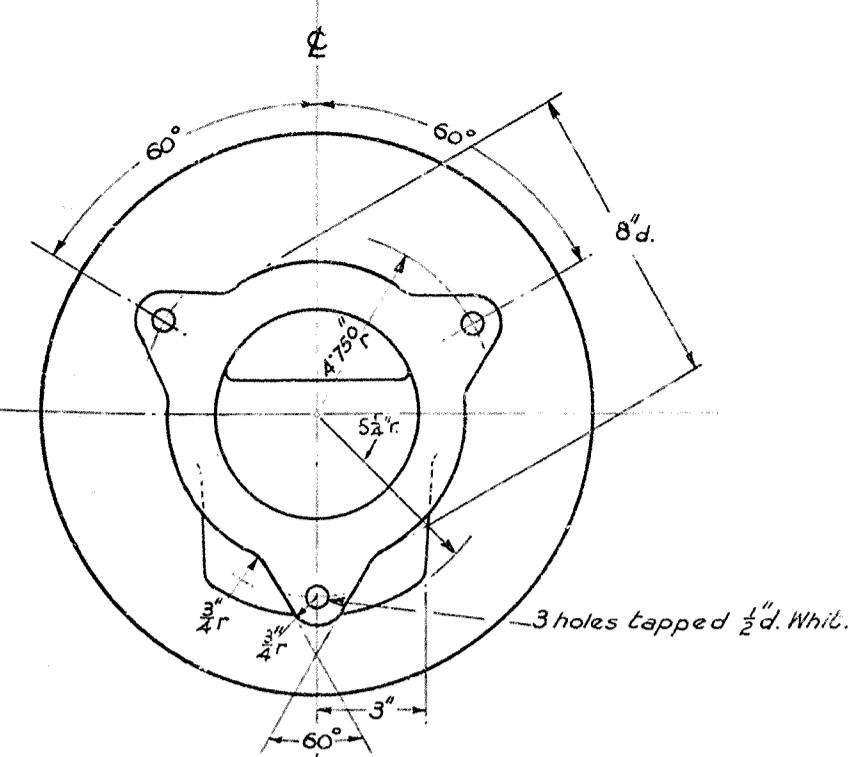
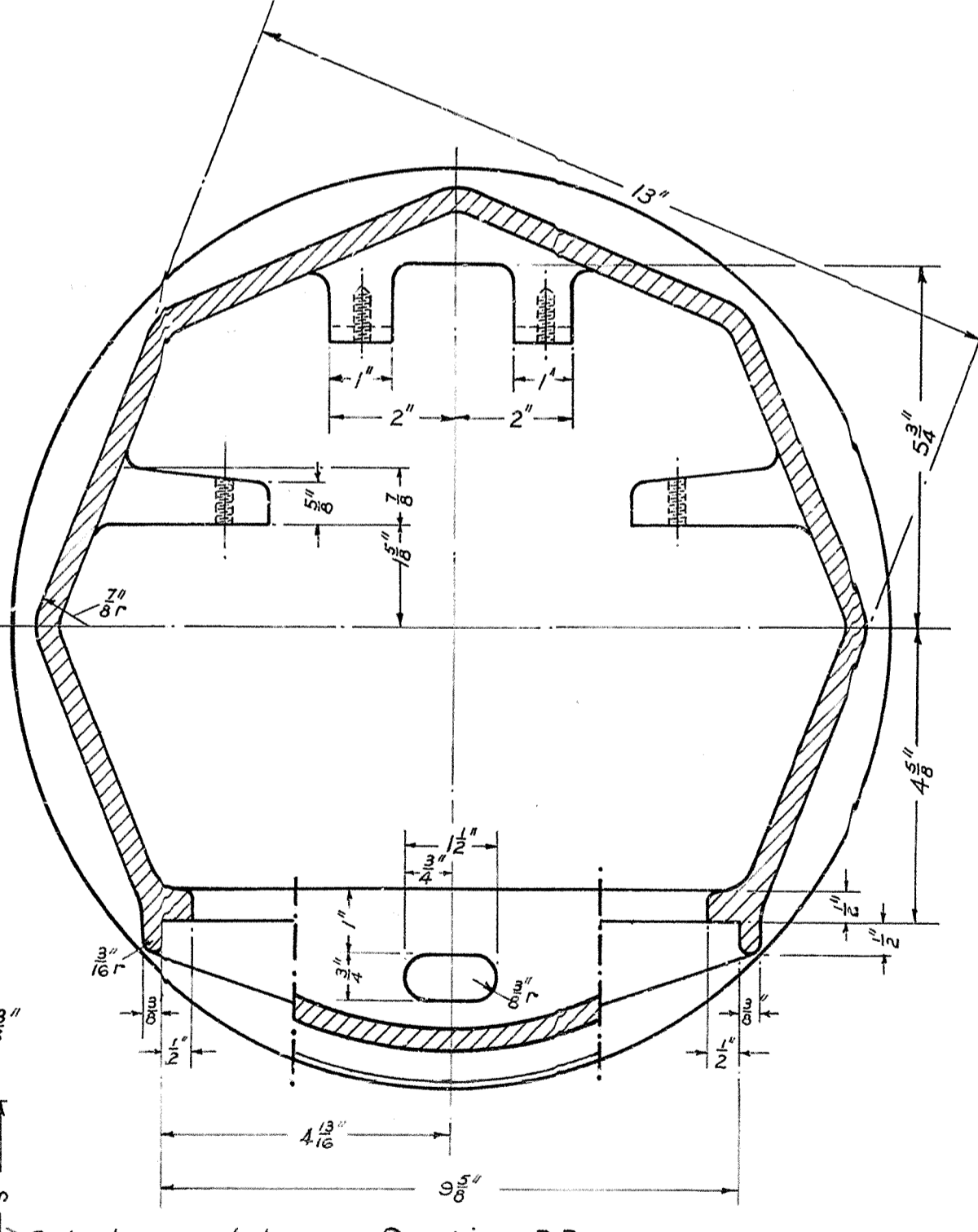
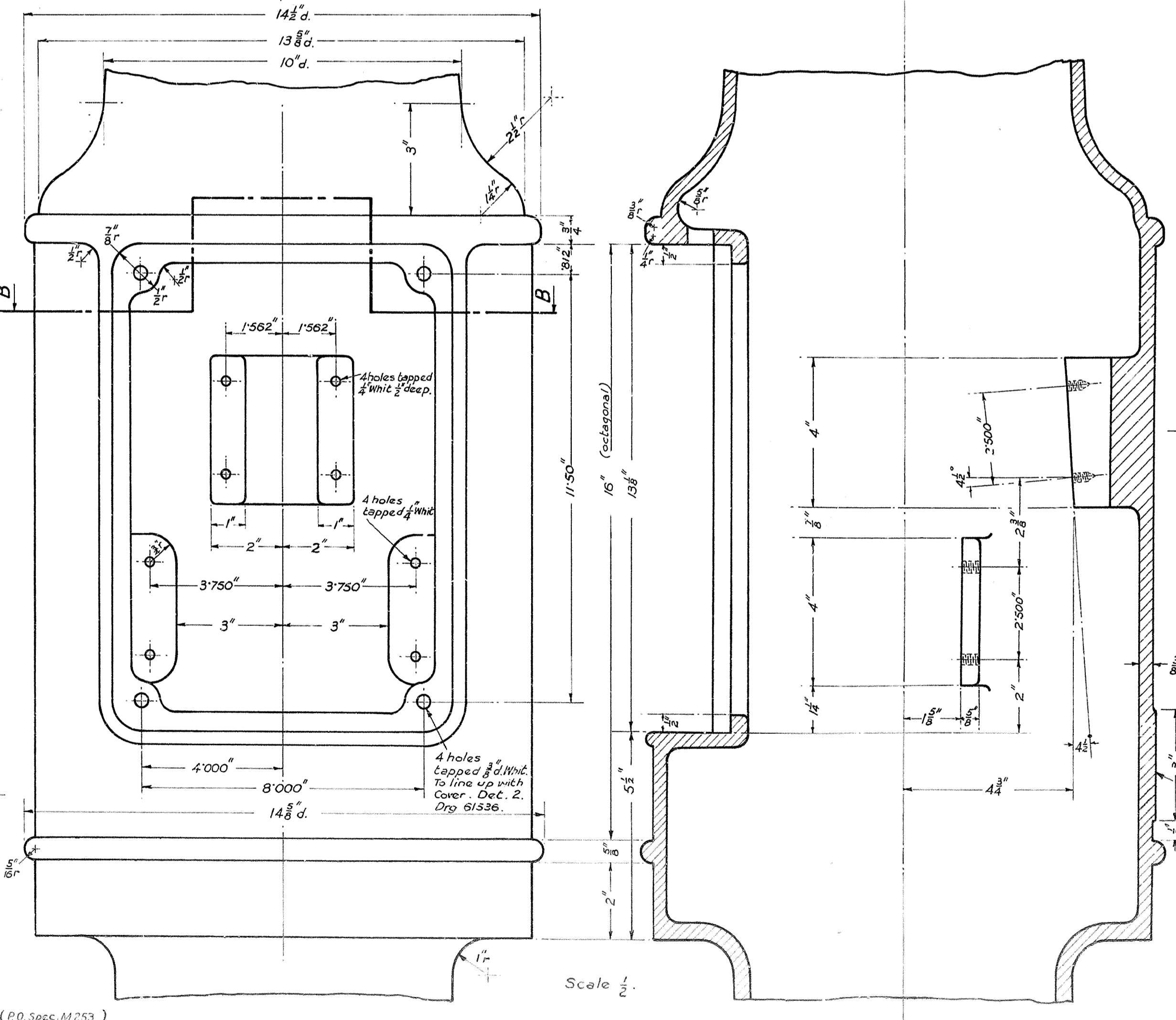
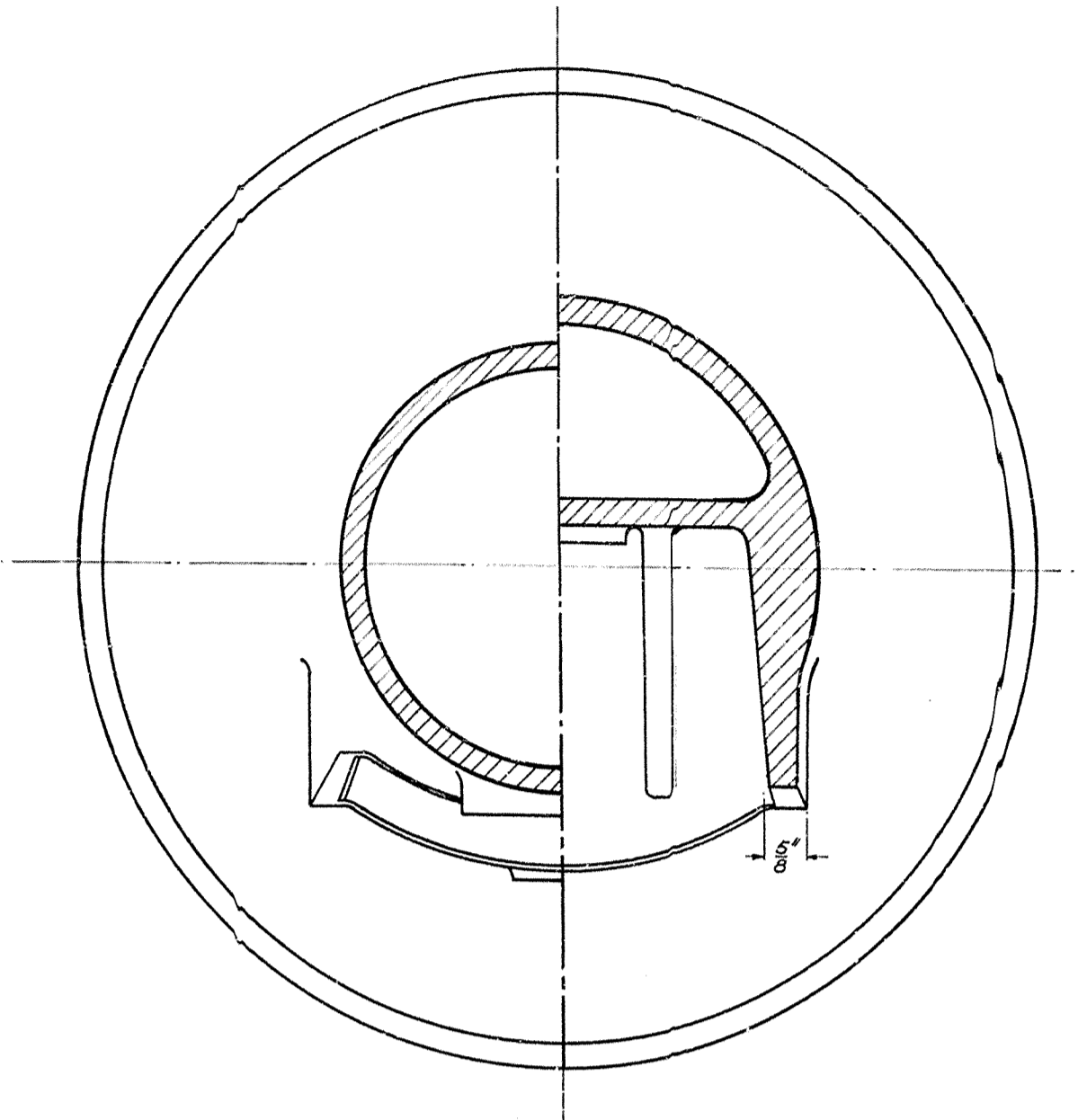
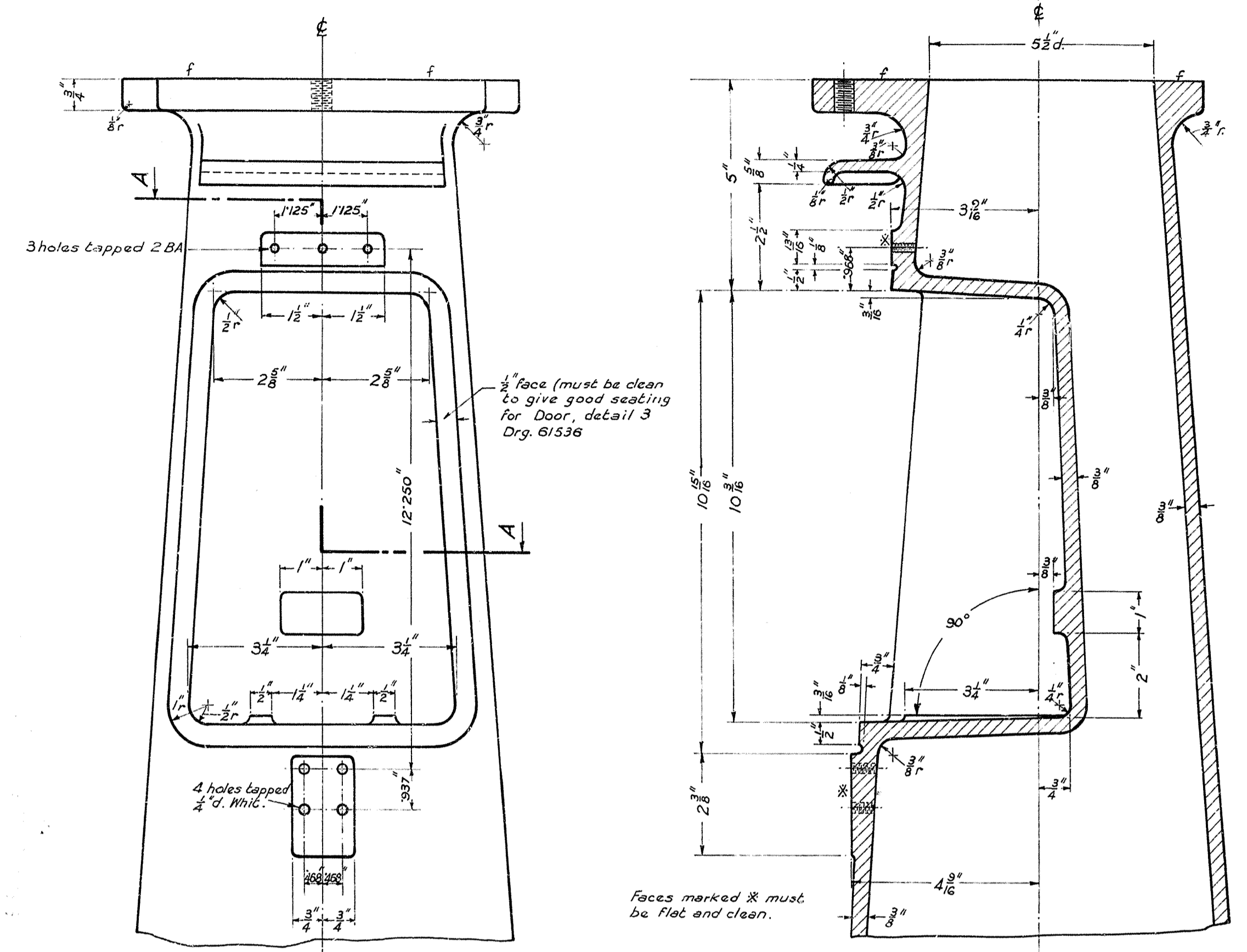


POST OFFICE ENGINEERING DEPT. ENGINEER-IN-CHIEF'S OFFICE.		
File Ref. Post 1206/32	Date. 29 9 32	
Drawn. H. G. S.	Traced. H. G. S.	Checked. J. C. W. H.
Apprd. [Signature] in S Branch		
[Signature]		

Amendment.	Suffix
FINISH WAS SINGLE COAT OF GREY LEAD PRIMING PAINT. 5/8" SPEC. 427.	A



PILLAR
 Scale $\frac{1}{4}$.
MATERIAL. Cast Iron.
FINISH. (a) Zinc spray followed by one coat of Zinc Chromate priming paint (PO Spec MT 53).
 OR
 (b) One coat of red lead priming paint (PO Spec M267) followed by one coat of good quality aluminium paint (PO Spec M 252).
 Buried portion to be treated with Bituminous Paint (PO Spec M 253)



61536	M252	D 1175
61533	M267	D 1000
	MT59	
	D 1175	
	M253	D 1000
DRAWINGS	SPEC'NS	

POST, P.A., No. 1.
 DETAIL (Pillar).
 FOR ASSEMBLY SEE DRG. 61533
 SPEC'N. D 1175
 SCALE - $\frac{1}{2}$ and as indicated
 DRG. 61534