

Engraving 11A1 White (Dr. SD1)

(A) Mounted centrally on side

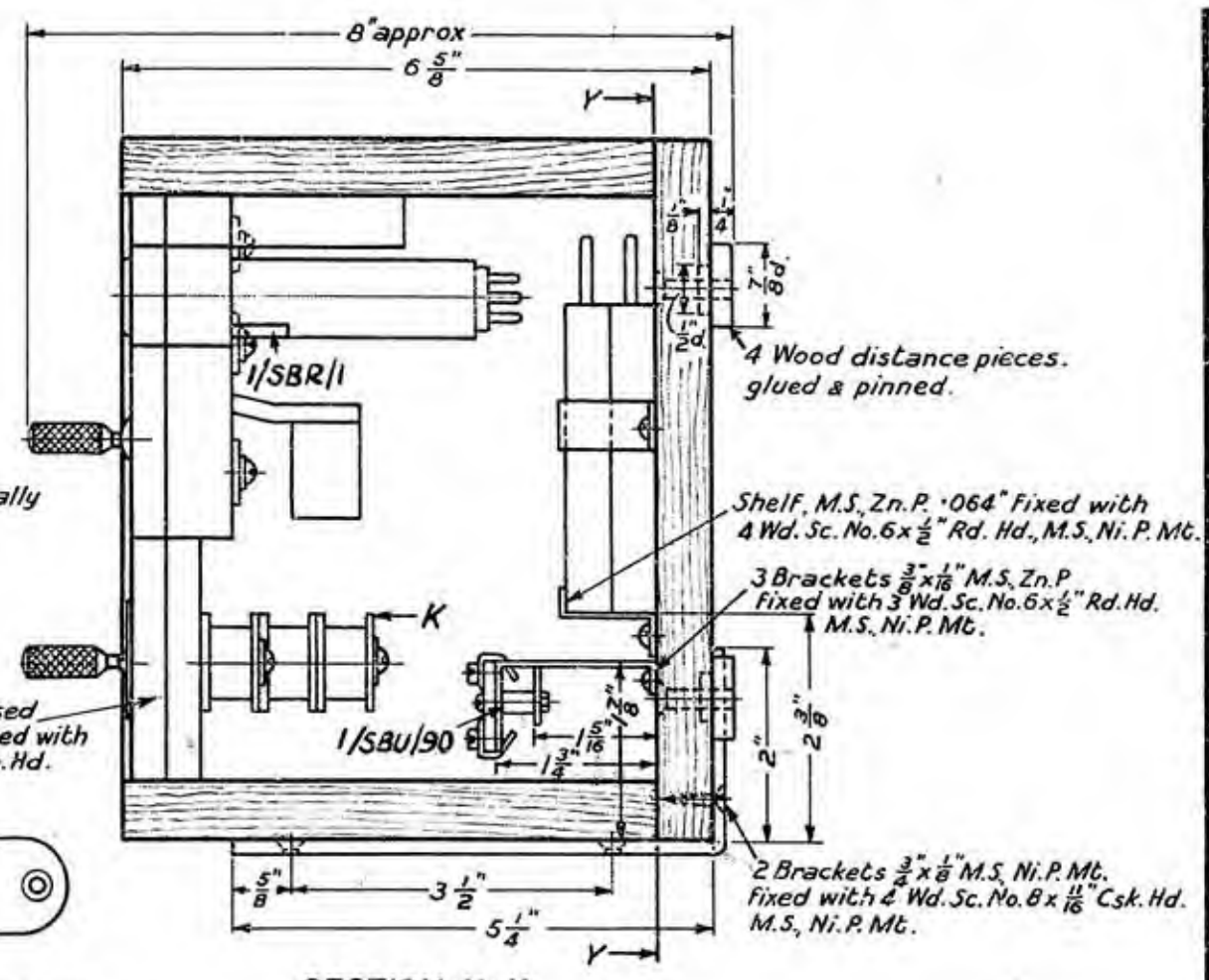
See note 1

Strip wood ebonised 10 5/8" face x 2 1/2" x 3/4" fixed with 4 screws 3 B.A. x 1/8" Ch. Hd. M.S. Ni.P. Mt.

SW. IND. & KEY
N 1617 10/10
DIA. N 1617

ITEM M
ENGRAVED 15 B 2 & FILLED WHITE

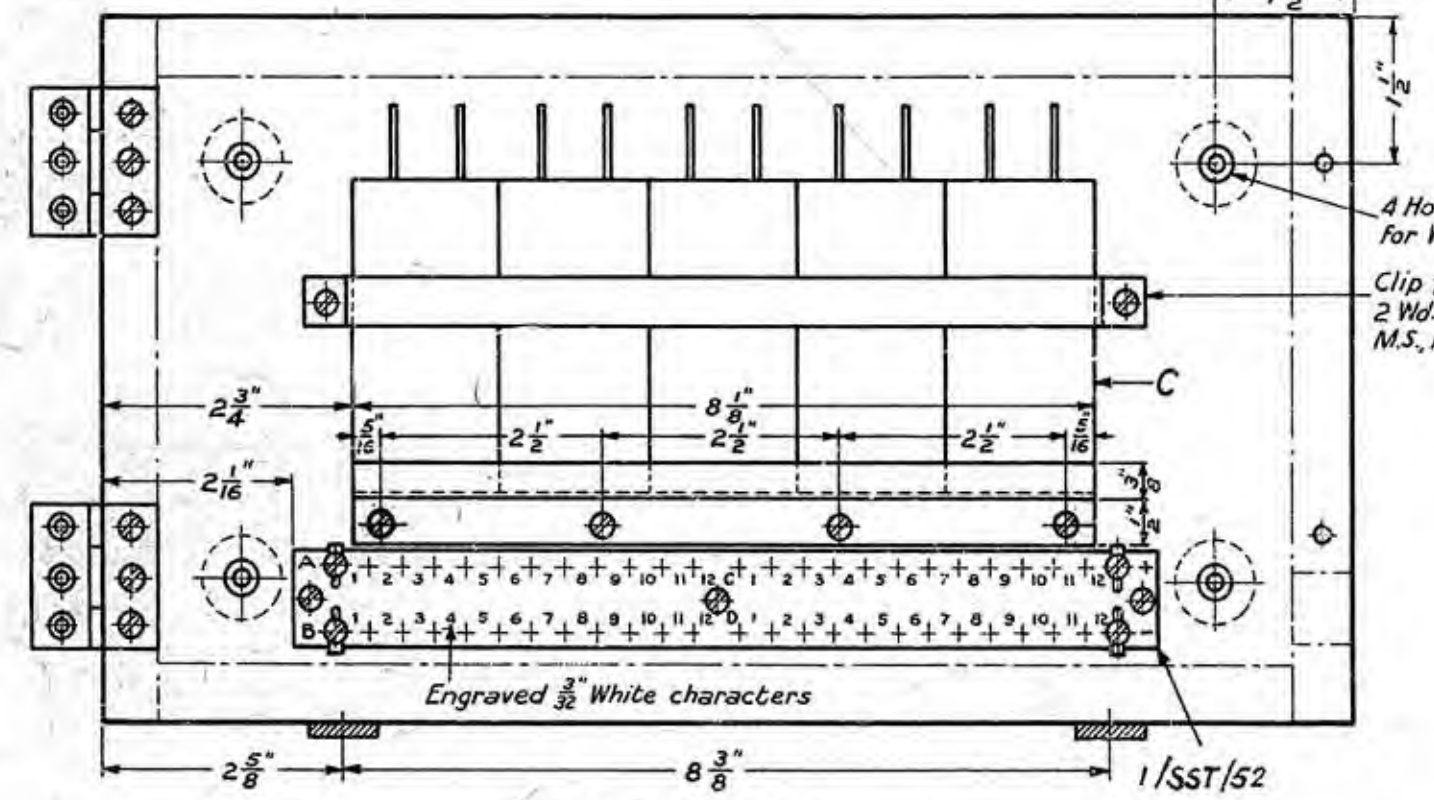
- NOTES
1. Position of cable hole altered as shown.
 2. Stile bars reversed.
 3. Strip, Designation No. 8, 16 5/8" overall reduced to 10 5/8" and end reformed.



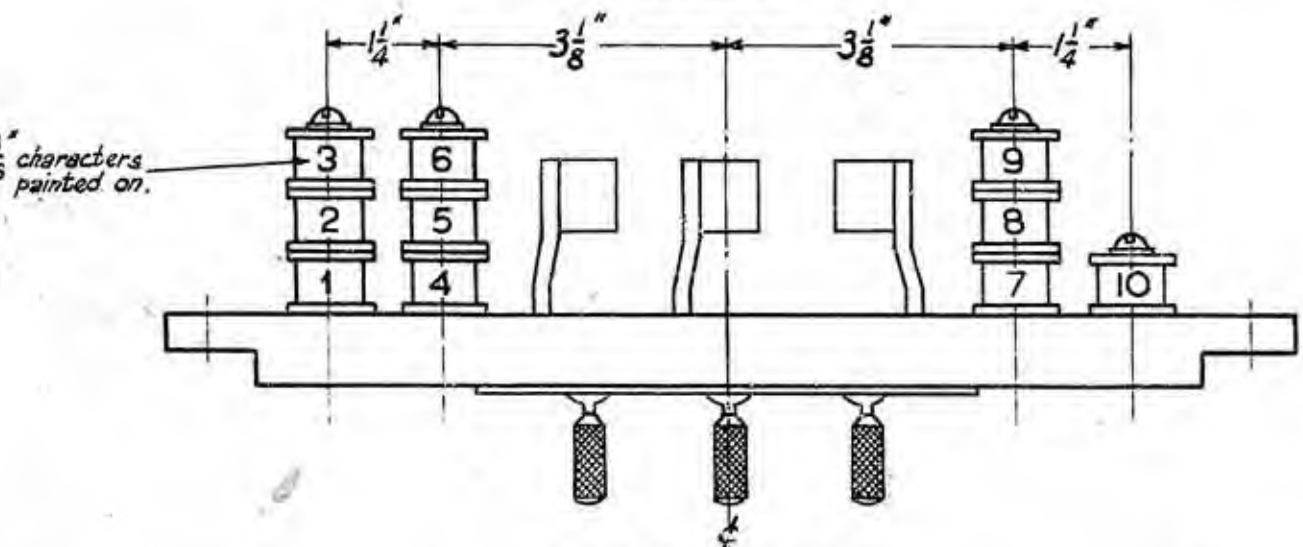
SECTION X-X

2	4	6	8	10
1	3	5	7	9

Marking of Condensers Item 'C'
Characters painted on.



SECTION Y-Y



Layout of Items K & E

ITEM	DESCRIPTION	QTY.	DRG.	SCREWS WASHERS ETC.			
				QTY.	DESCRIPTION	MATL.	FIN.
A	Buzzer No. 18A	1	8181	2	Wd. Sc. No. 7 x 1" Rd. Hd.	Br.	—
B	Case Sw. & Ind. D.9735 (see notes 1 & 2)	1	9735	4	Wd. Sc. No. 10 x 1 1/2" Csk. Hd. " " No. 10 x 3/4" " "	M.S.	Ni.P.Mt.
C	Condenser, M.C. No. 101	10	9208	—	—	—	—
D	Indicator No. 3300A	10	9609	20	Nuts, No. 4 B.A. special for Mtg. No. 130/10A	—	—
E	Key No. 68 black	3	60123	—	—	—	—
F	" No. 264 colours, see assembly	10	60157	—	—	—	—
G	Key-mounting KE	1	62433	2	Wd. Sc. No. 6 x 1/2" Rd. Hd.	Br.	Blk. Lac.
H	" KY	1	—	—	—	—	—
J	Mounting No. 130/10A	1	8450	—	—	—	—
K	Resistor, Coil No. 12 100Ω	10	9263	3	Wd. Sc. No. 6 x 2 1/2" Rd. Hd. & Washers " " No. 6 x 1 1/2" " " 2FM.	M.S.	Ni.P.Mt.
L	Strip, designation No. 8 (see note 3)	1	62474	3	Wd. Sc. No. 3 x 1/4" Csk. Hd.	Br.	Blk. Lac.
M	Label No 164 (Engraved)	1	62556	2	Wd. Sc. No. 3 x 1/4" Csk. Hd.	Br.	Clear.
SBR/1	PART 1/SBR/1	20	SBR/1	—	—	—	—
SBU/90	" 1/SBU/90	1	SBU/90	1	Screw 6 B.A. x 3/4" Ch. Hd. & Nut, Hex.	M.S.	Ni.P.Mt.
SST/52	" 1/SST/52	1	SST/52	2	Screw, 6 B.A. x 3/8" Ch. Hd. & Nuts, Hex.	"	"

* To be wrapped in paper and securely tied to R.H. Term/ Strip bracket.

POST OFFICE ENGINEERING DEPT.
ENGINEER-IN-CHIEF'S OFFICE.

File Ref. S.346 Date. 21.1.36

Drawn. Traced. Checked.

Appr'd in S Branch

Freid.

Amendment. Suffix.

Item F was Key No. 215
W.P. J.P. E.P.S. 24-6-36 A

Section X-X, dimension 1 7/8" was to inside of case.
A.P. A3/2443 W.S.A. 26-5-38 B

Title amended, N1617 Mk. 1 was CB 2024 Mk. 2. Item K was 1000Ω.
W.R. A3/2056 W.S.A. 1.7.38 C

DO & SUPERSESION NOTE ADDED
FITTING OF ITEMS 'E' SHOWN DRAWING
Nos. IN SCHEDULE BROUGHT UP TO DATE
LABEL ADDED (ITEM M)
W.P. J.P. K.B. 30.1.53 D

DO NOT SCALE
(A MICROFILM PROCESS PRINT)

SUPERSEDED FOR NEW WORK BY
DRG 60958/1

SD 1
SEE SCHED N 1617 D 1,000
DRAWINGS DIAGRAMS. SPEC'NS.

SWITCH, INDICATOR
& KEY, N 1617 10/10

MK. 1

DIAG. N 1617 REFERS.

SPEC'N. —

SCALE: — 1/2

DRG. 60,958/0