

SWITCHBOARDS CB935
 TERMINATION OF PRIVATE CCTS. & INTERSWITCHBOARD PRIVATE CCTS.

N953

6-10-23
 5 PANELS - I

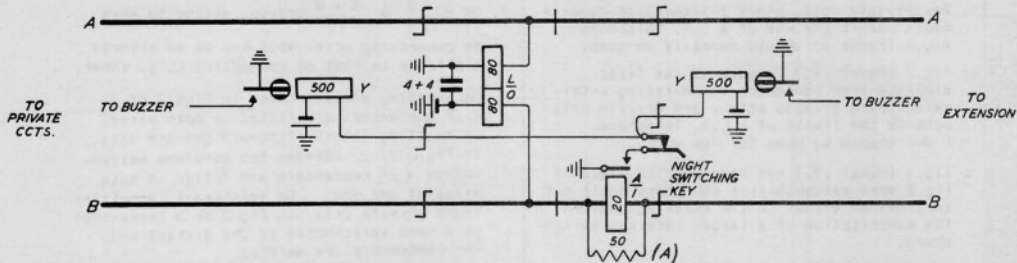
FIGS. 2, 3 & 5 SUPERSEDED
 FOR NEW WORK BY N 985

NOTES :-

CIRCULATION	CB & AUTO	
	Suffix	
	H	L
	7-9-48	U
	2-3-38	
	B-2-38	
NOTES AMENDED. SUPERSESION NOTE ADDED. (REVISIONS TO INDICATORS, KEYS & BEZELS. INTERBOARD PANEL 3 REARRANGED & REARRANGED. DUAL N° CB-103 REMOVED)		
Amendt.		
PAPER	W	

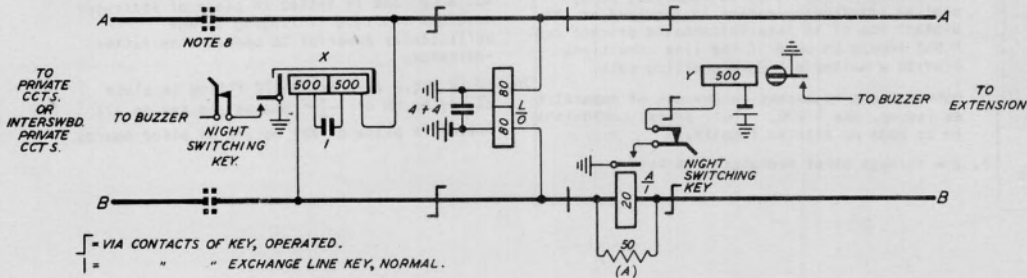
- For Private ccts. where transmission requirements permit the use of a C.B. telephone Fig.1 (Panel 3) should normally be used.
- Fig.2 (Panel 5.) is used on the first exchange-line equipment for existing inter-switchboard private ccts., and private ccts. outside the limits of a C.B. Telephone. N 985 should be used for new work.
- Fig.3 (Panel 4.) has been used in place of Fig.2 when exchange-line equipment could not be provided either on the existing board or by the substitution of a larger cordless switchboard.
- If two private circuits or interswitchboard private circuits are provided and intercommunication between them is required, or if similar intercommunication is required at the distant end of an interswitchboard private cct. N 965 should be used if the line conditions provide a suitable D.C. signalling path.
- Dotted lines represent connexions of apparatus as issued, see N 936. Full lines, connexions to be made or altered locally.
- X = through other exchange-line keys.
- On $\frac{3+7}{12}$ & $\frac{3+9}{12}$ boards, wiring to keys on connecting ccts. No.3 & 4 to be altered similarly to that on connecting ccts. shown.
- On existing private ccts. to Figs.2 or 3 4 μ F condensers are fitted in both wires. On existing interswitchboard private ccts., to Fig.2 or 3, between two cordless switchboards 4 μ F condensers are fitted in both wires at one end. On existing interswitchboard private ccts. to Fig.2 or 3 terminated on a cord switchboard at the distant end, the condensers are omitted.
- Indicator No.2200A in Mounting No.95/1B is used in Fig.3 in place of existing Indicator No. 400B, and is fitted in place of Indicator No.3700A in Fig.2 if ringing is not sufficiently powerful to operate the latter indicator.
- KP in Fig.2 is a Key No.72 fitted in place of Key No.68 on $\frac{1+3}{4}$ boards and Key No.171 fitted in place of Key No.212 on other boards.

FIG. 4 PRIVATE CCTS. (FIG. 1) THROUGH TO EXTENSION.



FIGS. 2, 3 & 5 SUPERSEDED F. R. NEW WORK BY N 985

FIG. 5 PRIVATE CCTS. OR INTERSWBD. PRIVATE CCTS. (FIGS. 2 & 3) THROUGH TO EXTENSION



⌈ = VIA CONTACTS OF KEY, OPERATED.
 | = " " EXCHANGE LINE KEY, NORMAL.

CIRCULATION

CB & AUTO.

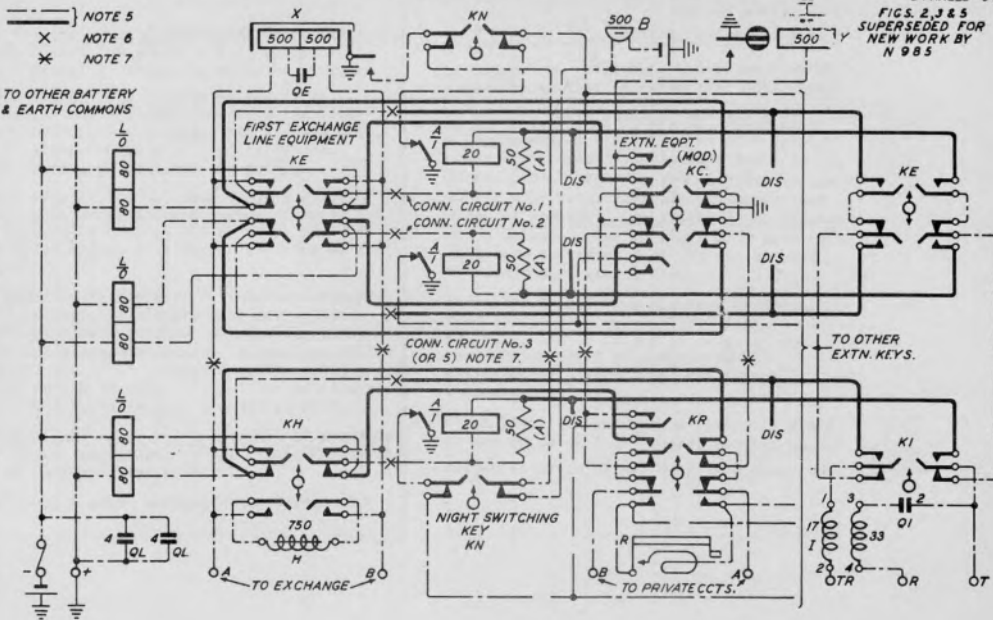
SWITCHBOARD C.B. 935.

FIG. 1 TERMINATION OF PRIVATE CCTS. WITH C.B. TELEPHONE. (NO. 1000)

N 933

6-10-23.

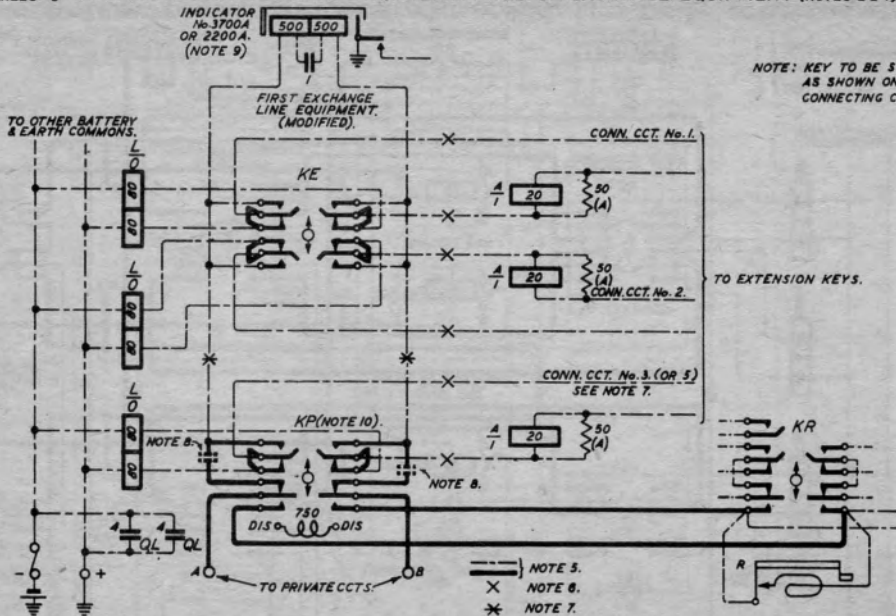
5 PANELS-3

FIGS. 2, 3 & 5
SUPERSEDED FOR
NEW WORK BY
N 985NOTES AMENDED
SUPERSESSION NOTE ADDEDConsolidated indicator, key KN & buzzer amended. Panel 5
(Redrawn & Re arranged. Dial No. CB1000 revised) 8 2 331 F

AMENDMENT

W

FIG. 2. PRIVATE CCTS. WITH LB TELEPHONE & GENERATOR, OR
 INTERSWITCHBOARD PRIVATE CCTS. TERMINATED ON EXCHANGE EQUIPMENT (NOTES 2 & 4).



NOTE: KEY TO BE STRAPPED AS SHOWN ON EACH CONNECTING CIRCUIT.

--- } NOTE 3.
 X } NOTE 4.
 * } NOTE 7.