

NOTES:—

1. Telephone No.712...Mark 1 is fitted mainly in the L.T.R. North West Area, see Works Specification S(W)2072. Only 1000 were issued, and must not be re-installed.
2. Telephone No.712...Mark 2 supersedes Telephone No.712 Mark 1, see Works Specification S(W) 2091.
3. Terminals T5—T6 should not be strapped.
4. This Telephone may be fitted only as a single Instrument and on:—
 - (1) Direct Exchange Line—Exclusive and Shared Service.
 - (2) 2—wire P.B.X. Extensions—With or without recall.
 On Extension Plans, Telephone 722 will be used, See Diagram N822.

P.O. TELECOMMS. HQRS.	ISSUE		
PAPER: Y			
CIRCULATION:			
GENERAL		A REDRAWN NEW FORMAT MADE YELLOW. F.E.I. TROKE \$1/1	17.1.68. 30.3.65

TELEPHONE No.712...MARK 1 & 2

FIG.1. TELEPHONE No.712 MARK 1

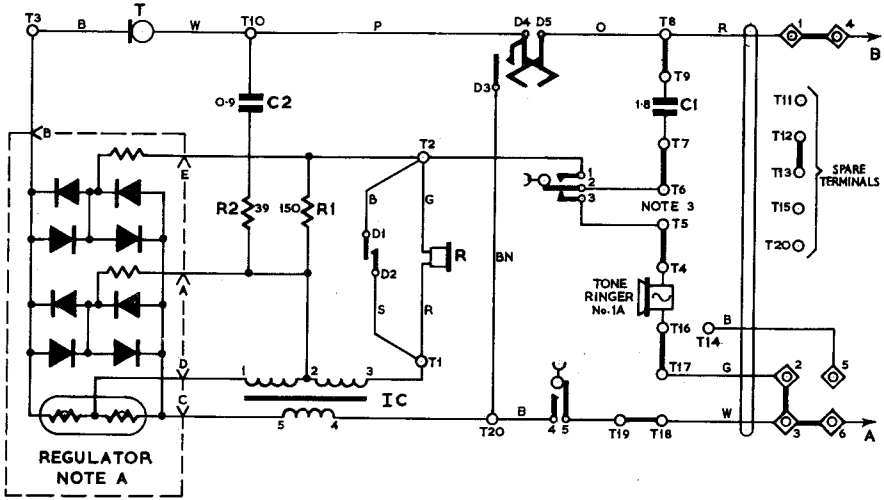
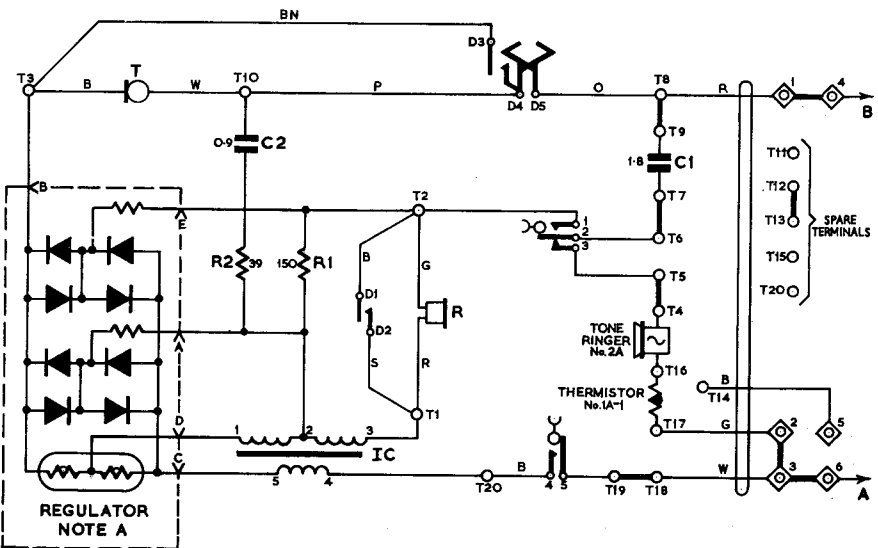


FIG.2. TELEPHONE No.712..MARK 2



NOTES:—

- A. The Regulator is made inoperative when it is reversed in the Jack, in that condition Points B,C and D are connected together.

FIG.3. AUTOMATIC SYSTEMS, SHARED SERVICE LINES
(SEPARATE METERING).

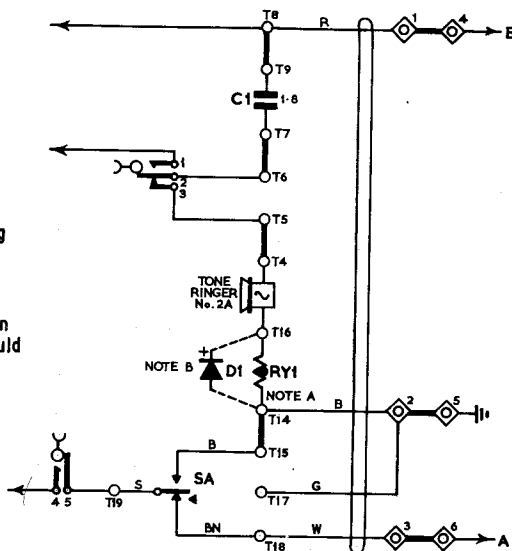
USING:-

- Telephone No.712L MKII
- Switch No.13A-1.SA
- Thermistor No.1A-1.RY1
- Valve Electronic CV425.DI

WITHOUT EXTENSION BELL

NOTES:-

- A. Remove straps where necessary.
Transfer Thermistor No.1A-1
Connexion from T17 to T14.
- B. In U.A.X. areas with Vibrator Ringing
provide and fit Valve Electronic
CV245.
- C. Exchange Line Connexions are shown
for Station X. The Connexions should
be reversed for Station Y.



WITH EXTENSION BELL

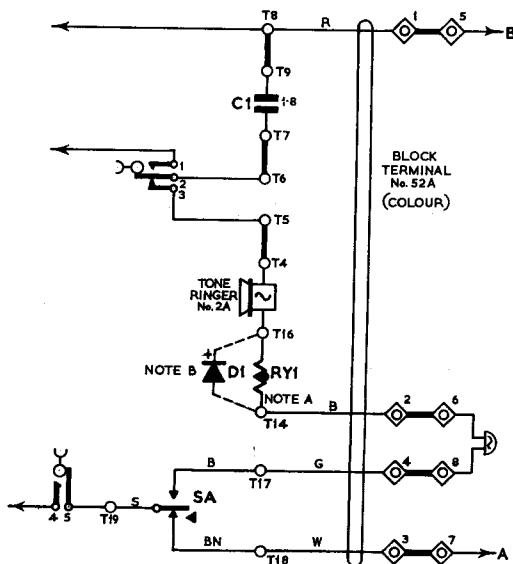
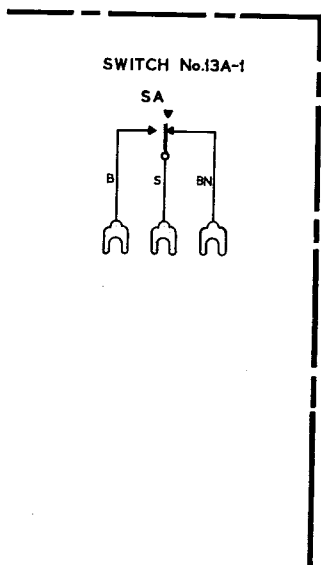
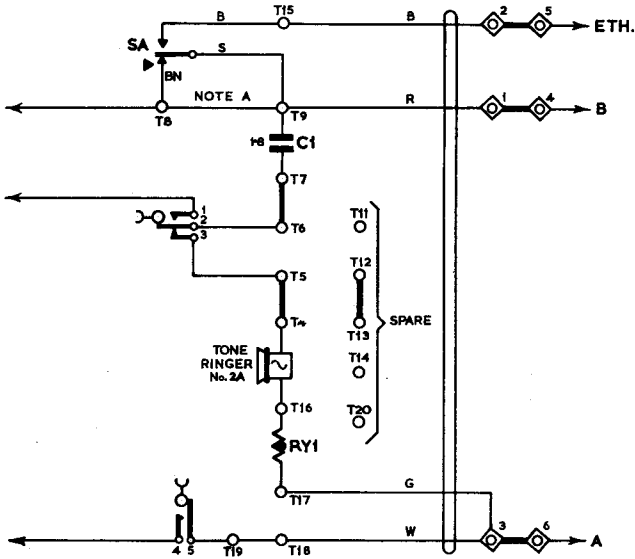


FIG. 4. AUTOMATIC SYSTEMS, 2-WIRE P.B.X. EXTENSIONS WITH RECALL
USING:—

Telephone No.712L MKII
Switch No.13A-1.....SA
Thermistor No.1A-1....RY1



NOTES:—

- A. Retain strap T8-T9 for earth loop recall. Remove strap T8-T9 for one line earth, loop disconnected recall.