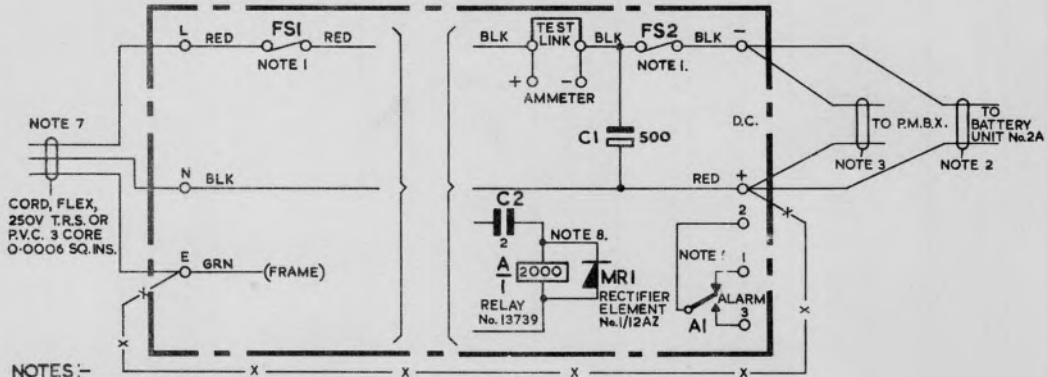


RECTIFIER No.94A (FOR USE WITH BATTERY UNIT No.2A)

N 663
17-10-61

CIRCULATION	GENERAL
SUFFIX	
26.11.64 B	
4-5-62 A	
NOTE 6 AMENDED C1 ADDED. C MADE C2	
PAPER	W



NOTES:-

1. FSI-FUSE No.36A/0-25 FS2-FUSE No.36/0-75.
2. FOR BATTERY UNIT CABLING SEE N65B.
3. FOR P.M.B.X. CABLING SEE N1102 OR N1103.
4. FOR INTERNAL CONNEXIONS REFERENCE SHOULD BE MADE TO THE PASTER DIAGRAM.
5. CONTACT SHOWN WITH RELAY UNOPERATED.
6. ONE SIDE OF THE OUTPUT (NORMALLY +) SHOULD BE CONNECTED TO THE TELEPHONE SIGNALLING EARTH. THE MAINS PROTECTIVE EARTH MUST NOT BE UTILISED FOR THE TELEPHONE SIGNALLING EARTH. AN ENTIRELY INDEPENDENT CONNEXION TO A SEPARATE EARTH e.g. AN ADDITIONAL SPIKE MUST BE PROVIDED. THESE TWO EARTHS SHALL BE CONNECTED TOGETHER AT THE TERMINAL BLOCK OF THE RECTIFIER BY AN INSULATED CONDUCTOR SIMILAR TO THAT USED FOR THE MAINS PROTECTIVE EARTH CONNEXION. SEE WIRING SHOWN THUS —X—X—.
7. PLUG TO SUIT SUBSCRIBERS SOCKET OUTLET AND CORD FLEX... TO BE REQUISITIONED SEPARATELY.
8. ALARM RELAY AND RECTIFIER-ELEMENT ARE TYPICALLY SHOWN— SEE PASTER DIAGRAM FOR PARTICULAR ARRANGEMENT.