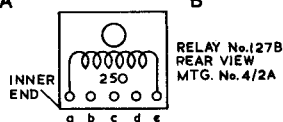
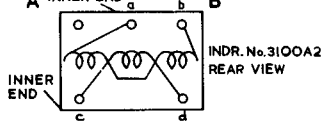
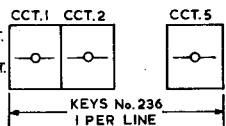
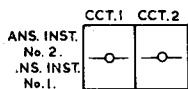
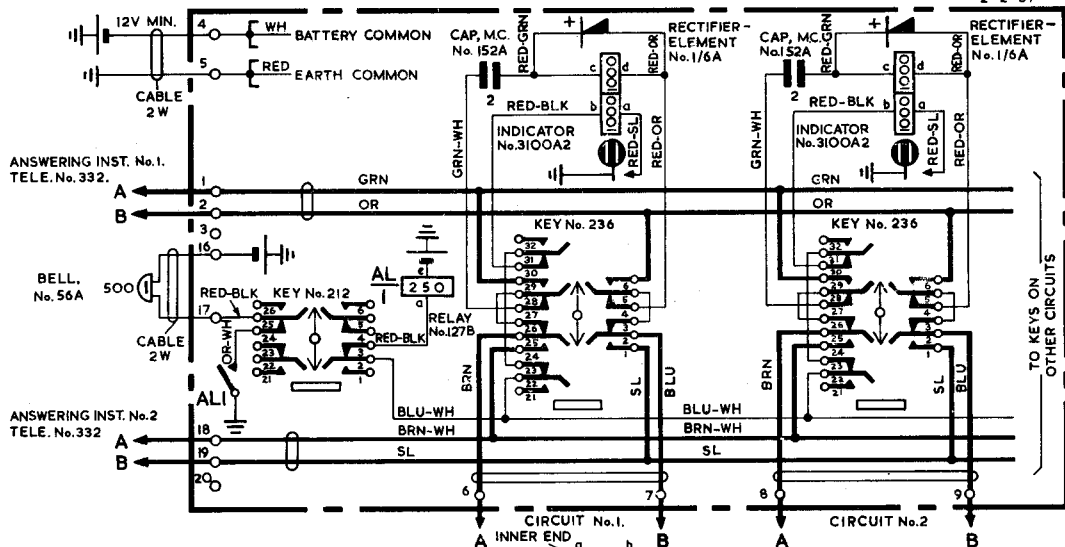


# SWITCH, INDICATOR & KEY NI659 <sup>5</sup>/<sub>U</sub> (NOTE 4)

FOR TERMINATING UP TO 5 EXCH. LINES WITH 2 ANS. INST. FOR INSTALLATION CONTROLS.

NI659  
3 PANELS-1  
2-2-37

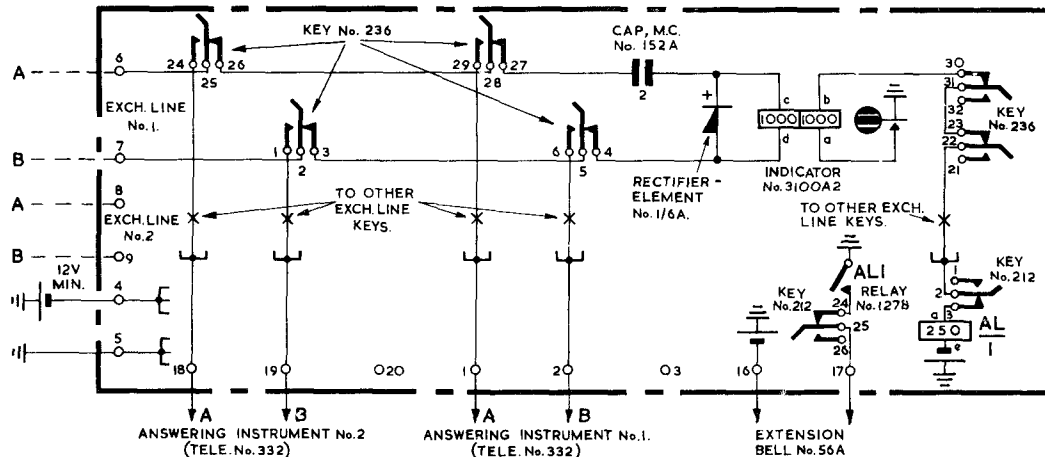
REDRAWN, MINOR CORRECTIONS & COLOUR CHANGES  
 MADE 3 PANELS SUPERSESSION NOTE ADDED  
 TO PANEL 3.  
 17-10-61 F  
 17-3-60 E  
 SPECIAL



N1659

3 PANELS-2

EXPLANATORY DIAGRAM



NOTES:-

1. FOR TERMINATING UP TO 5 EXCH. LINES, WITH 2 ANSWERING INSTRUMENTS, FOR INSTALLATION CONTROL CENTRES. INCOMING CALLS OPERATE INDICATOR, AND LINE IS SWITCHED TO EITHER INSTRUMENT BY THROWING LINE KEY IN APPROPRIATE DIRECTION. KEYS MUST BE RESTORED TO NORMAL WHEN CONVERSATION IS FINISHED.
2. TO BE REQUISITIONED SEPARATELY AS REQUIRED:- TELE. No. 332, BELL, No. 56A. BLOCK, TERMINAL 20/4.
3. THE CONSTRUCTION AND LAYOUT OF "SWITCH, INDICATOR & KEY" N1659 ARE SHOWN ON DRAWING No. 63403.
4. SWITCH, INDICATOR AND KEY No. 1659  $\frac{5}{5}$  MAY BE REQUISITIONED IN MAHOGANY OR OAK.

# SWITCH INDICATOR & KEY N16 59 <sup>5</sup>/<sub>10</sub> (NOTE 4)

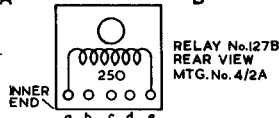
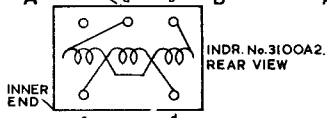
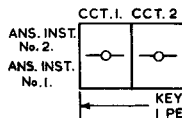
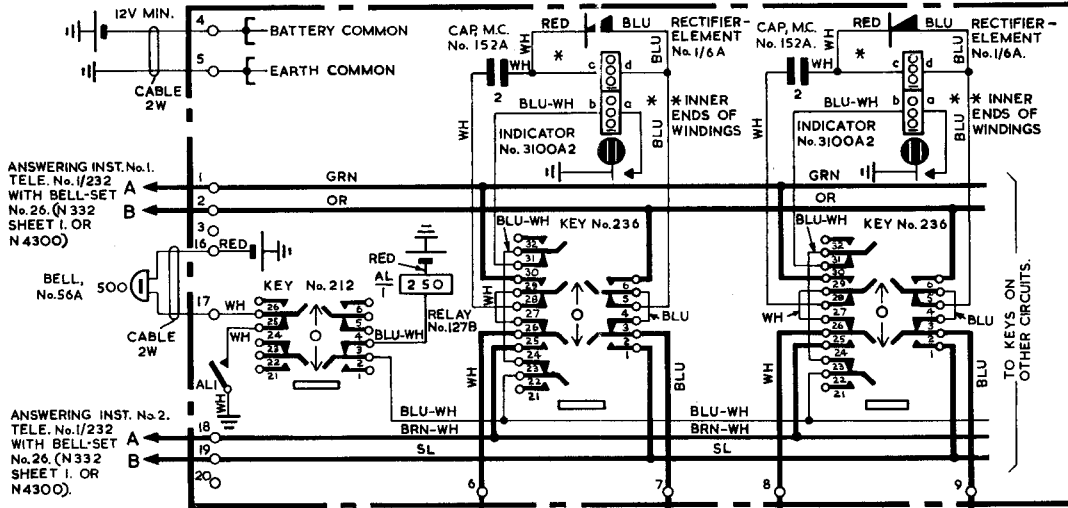
FOR TERMINATING UP TO 5 EXCH. LINES WITH 2 ANS. INSTS. FOR INSTALLATION CONTROLS

N1659

3 PANELS-3  
2-2-37

SUPERSEDED FOR NEW WORK BY PANEL I.

SPECIAL 17.10.61 F  
 REDRAWN, MINOR CORRECTIONS & COLOUR CHANGES  
 MADE, 3 PANELS SUPERSESSION NOTE ADDED 17-3-60 E  
 TO PANEL 3.



TO KEYS ON OTHER CIRCUITS.