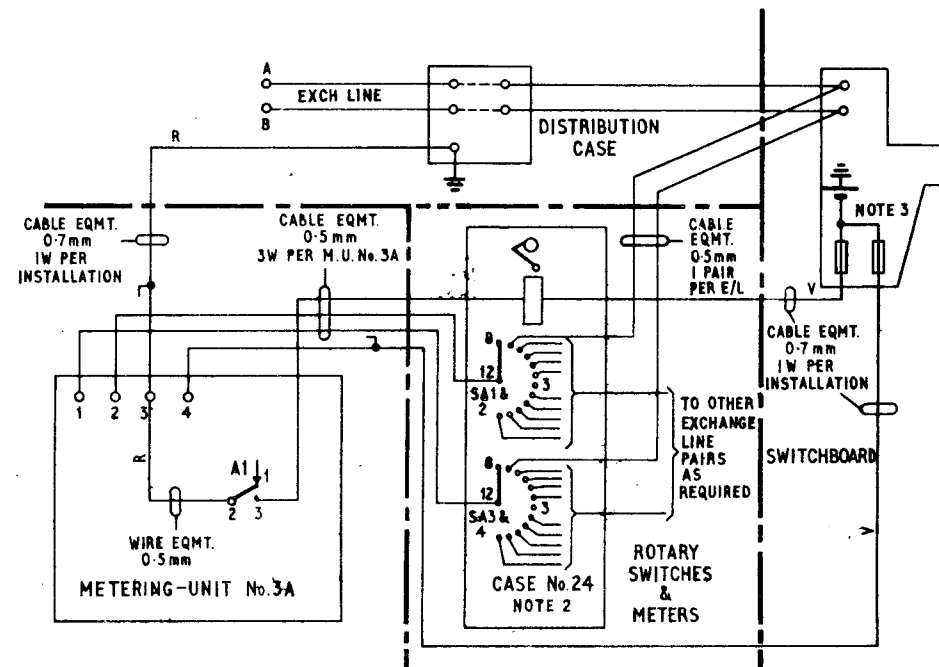


S.T.D METERING AT P.M.B.X's
NON-MULTIPLE CORD TYPE SWITCHBOARDS
SCHEME C1 (NOTE 5)

APPARATUS SCHEDULE	
DESCRIPTION	No. OFF
Metering - Unit No.3A	As required (max.2 per position)
Mounting No.D91477	1 per Metering Unit No.3A
Parts/DBL/95	As required. See Note 6
Meter No.21A	1 per Metering Unit No.3A
Switch Rotary CD5022	1 per Metering Unit No.3A
Fuse-Mounting No.101A	1 per Case No.24
Fuse No.1/0.5	1 per Case No.24
Fuse No.1/1.0	1 per 10 Metering Units No.3A
Case No.24 (Note 2)	1 per position
Knob Instrument No.8	1 per Switch Rotary CD5022
Mounting D91549	1 per Case No.24
Meter, Dummy No.2	As required
Label, Dummy No.1	As required
Label No.359A or B Note 4	As required for Switch Rotary CD 5022
Label No.362	As required for Switchboards CB 873
Label No.363A or B Note 4	As required for SWBDS.AT3796 & N1070 $\left(\frac{10+30,10+50}{65} \frac{10+50}{65}\right)$
Label No.364A or B Note 4	As required for SWBDS.AT3796 & N1070 $\left(\frac{10+60}{180}\right)$



NOTES:—

1. CB 873 — $\frac{3+10}{25}, \frac{5+20}{25}$
 N1070 — $\frac{10+30}{65}, \frac{10+50}{65}, \frac{10+60}{180}$
 AT 3796 — $\frac{10+30}{65}, \frac{10+50}{65}, \frac{10+60}{180}$
2. See Dgm. N1012 for Case No.24 fitted for Scheme C.
3. Fuse-Mounting No.101A.
 One Fuse No.1/0.5 per Case No.24.
 One Fuse No.1/1.0 per 10 Metering Units No.3A.
4. Label No.359A engraved 1-10
 Label No.359B engraved 11-20
 Label No.363A engraved 1-10
 Label No.363B engraved 11-20
 Label No.364A engraved 1-10
 Label No.364B engraved 11-20
5. See Dgm.N1010 for details of metering schemes.
6. The quantity of Parts 1/DBL/95 depends upon the mounting arrangements of the Metering-Units No.3A. When mounted individually 2 parts are required per Metering-Unit. When bolted together side by side 2 parts are required only for the ends

P.O. TELECOMMS. HQRS.	ISSUE		
PAPER:— W			
CIRCULATION: GENERAL			
	A	NEW FORMAT. MINOR AMENDMENTS. <i>MCH</i>	TD 2.4.1 SECTION 12-10-73
	/	E.C.C. STEVENS S3	30.12.59