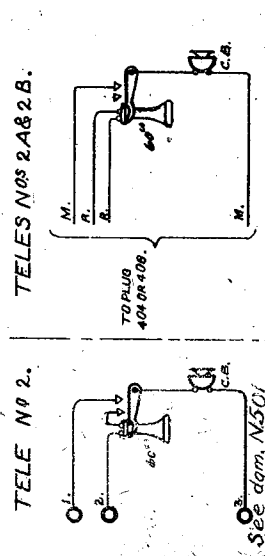
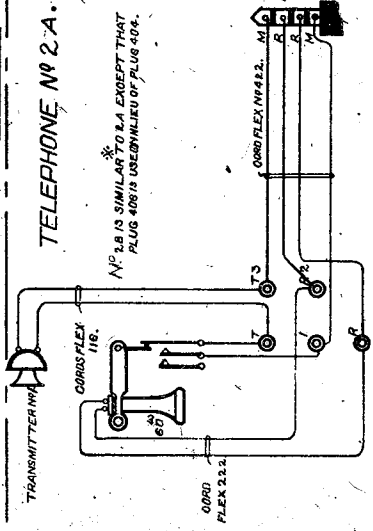
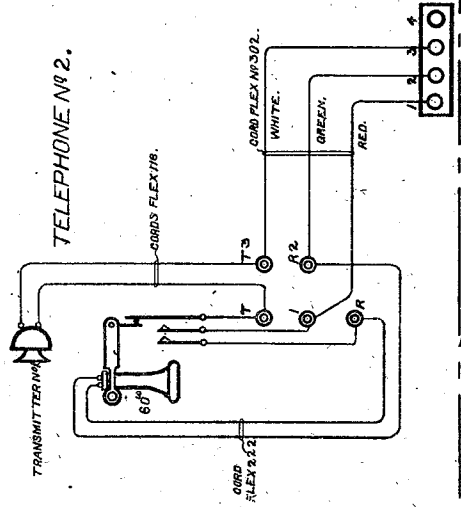
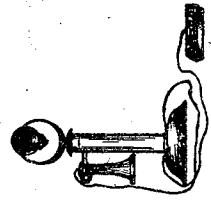


TELEPHONES NOS 2, 2A, & 2 B.

N.102 11.4.17.
C.B.I.A. E.C.1065.



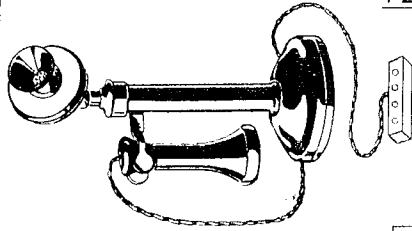
TELEPHONES N^{os} 2, 2A, & 2B.

N.102.

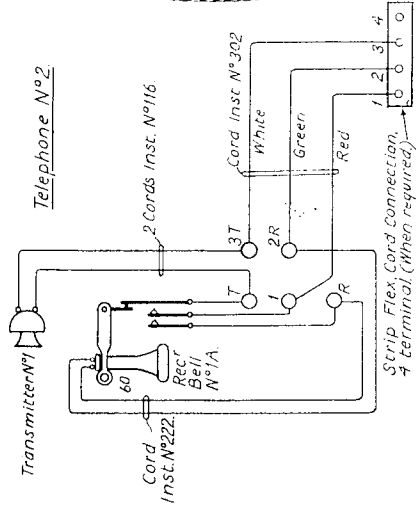
C.B.1366.E.C.1065

22-12-28

CRYST. SET.

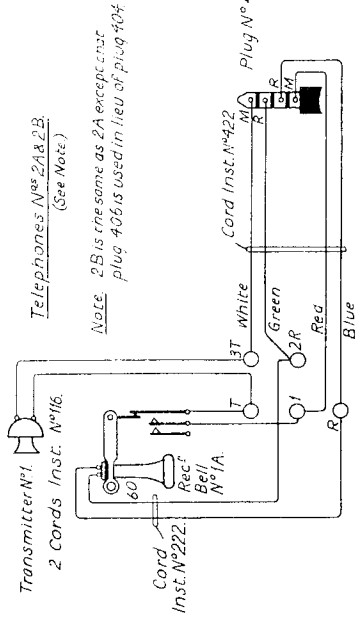


Telephone N° 2.



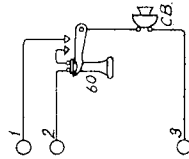
Telephones N^{os} 2A & 2B.

(See Note.)



Note. 2B is the same as 2A except that plug 406 is used in lieu of plug 404.

Tele. N° 2.



Teles. N^{os} 2A & 2B.

