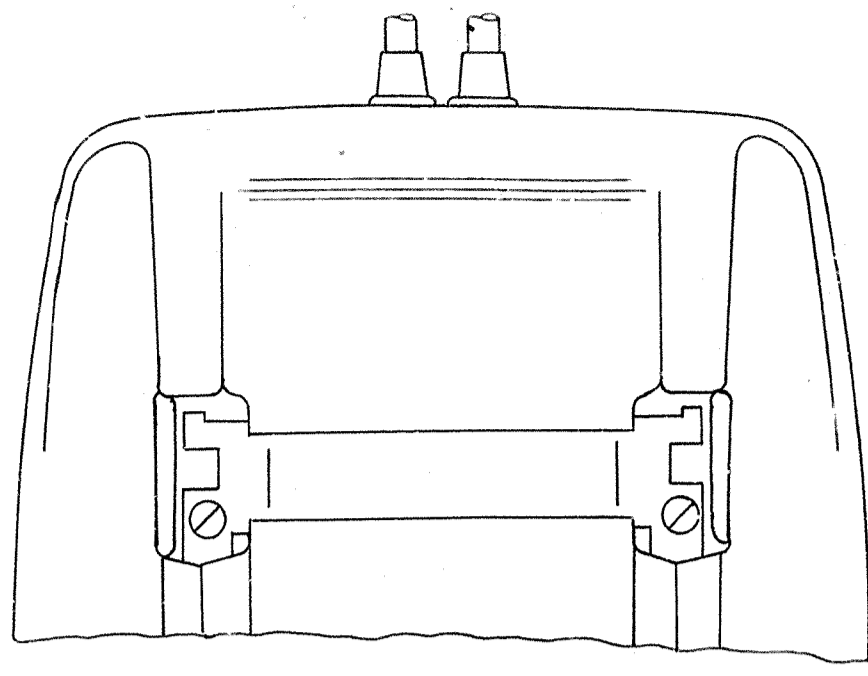
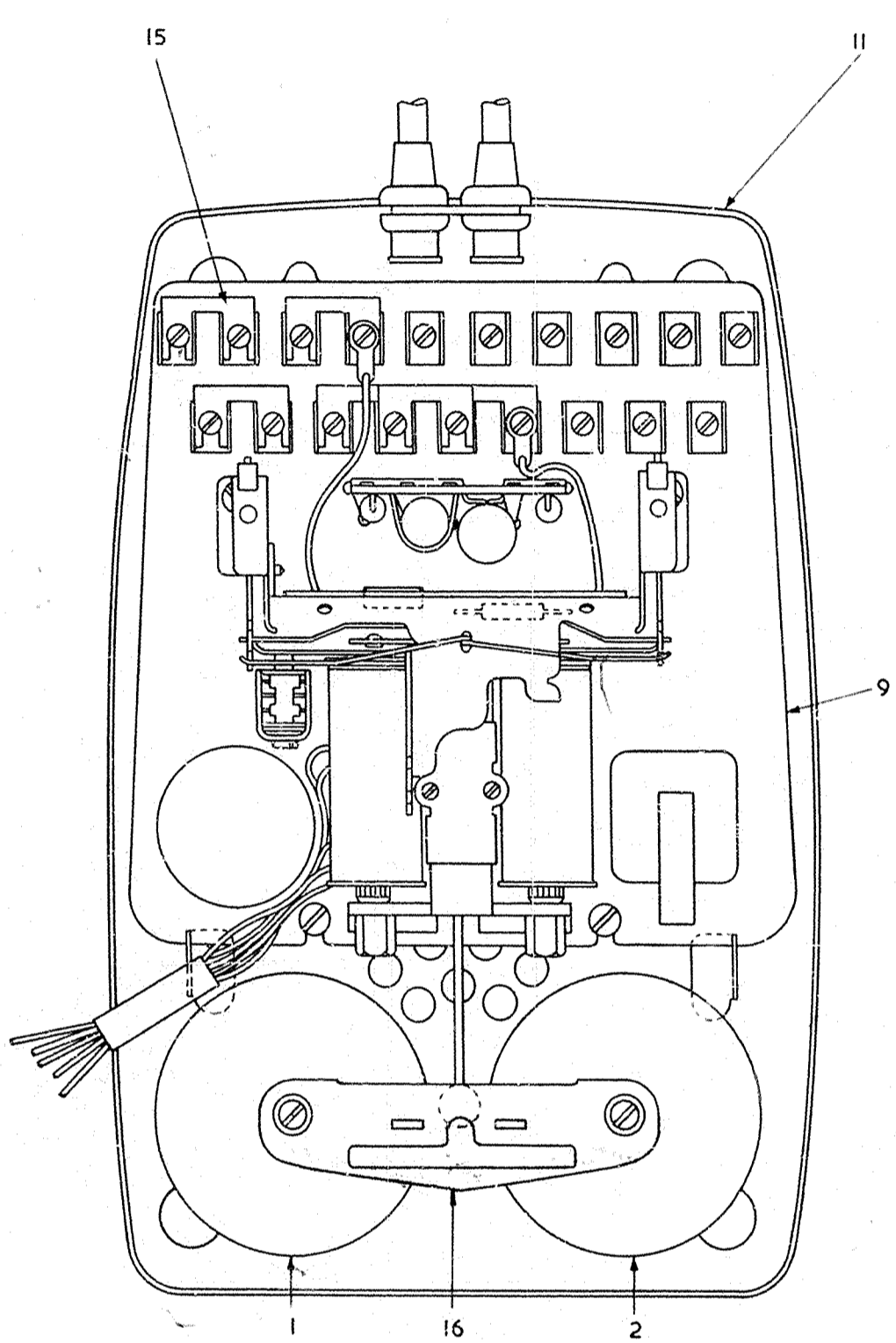


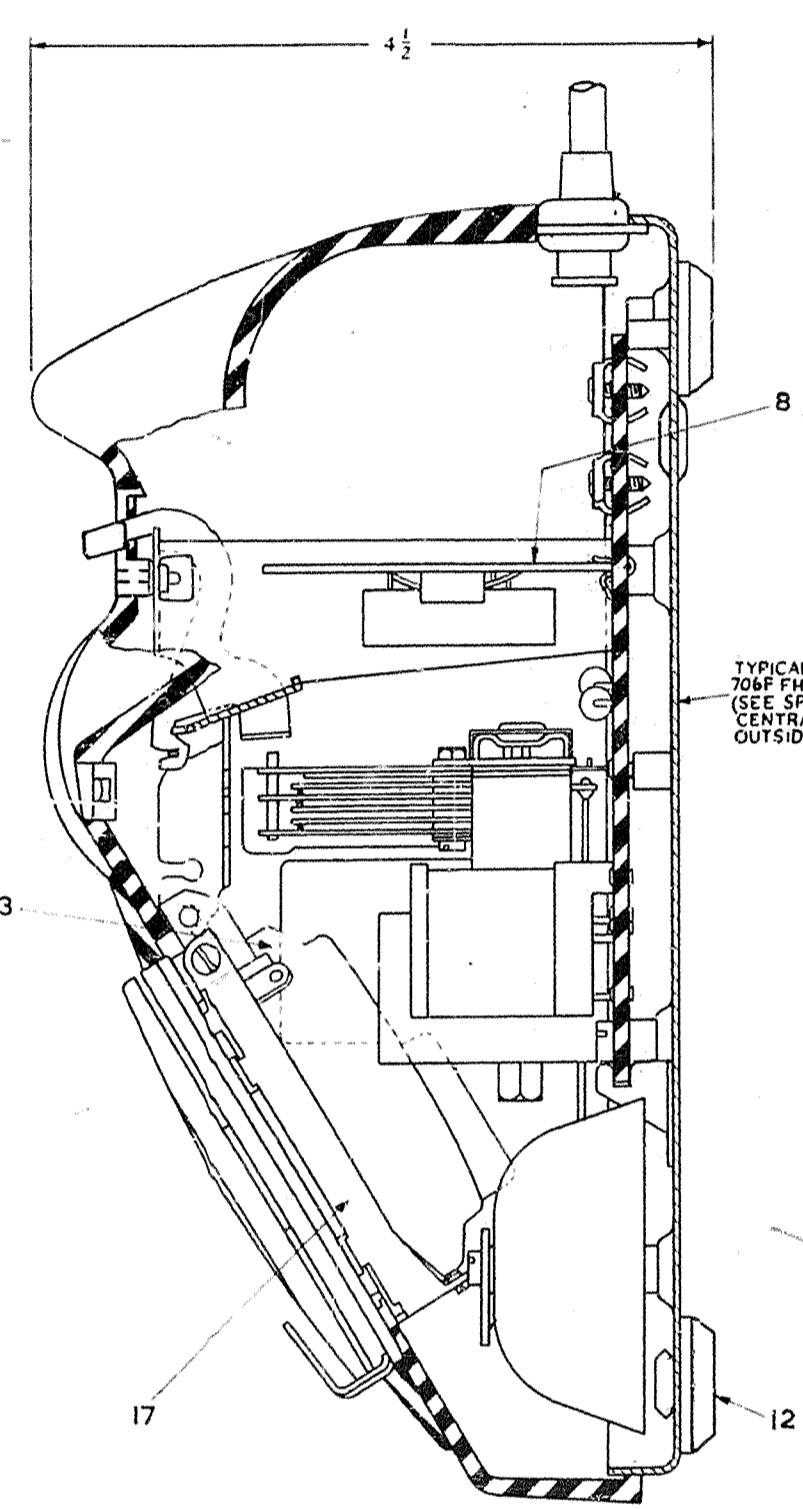
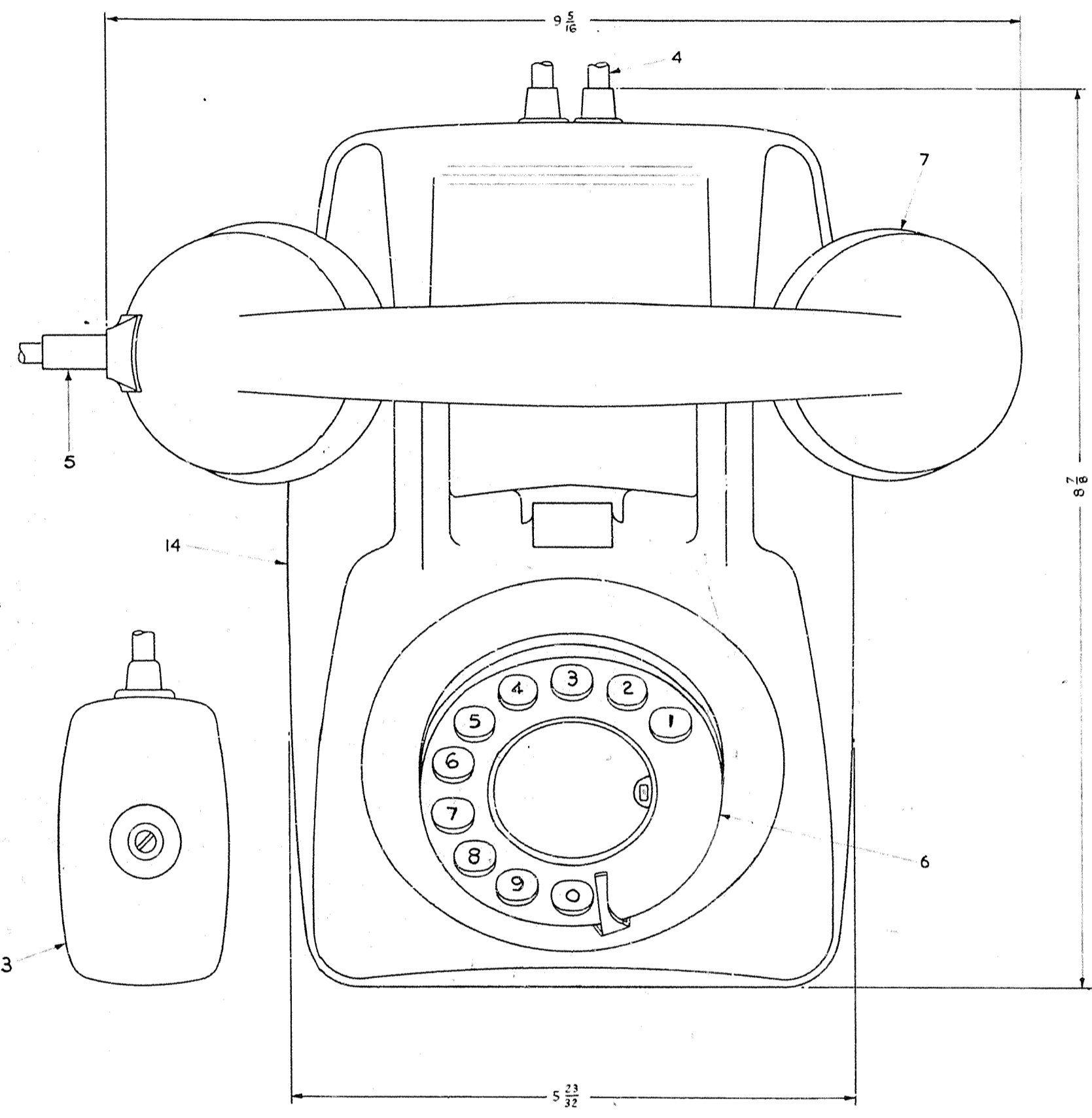
POST OFFICE TELECOMMUNICATIONS HEADQUARTERS	
DISTRIBUTION GENERAL	
REFERENCES	
SEE SCHEDULE	SPEC D.000 5586
ASSEMBLY ORG	WIRING DGM N806
FILE 3500/706	SPEC 5586
SCALE	1 AND AS INDICATED
THIRD ANGLE PROJECTION	
DECIMAL DIMENSIONS NOT TOLERANCED SUBJECT TO	
APPROVED	PHOTOCOPIED
<i>[Signature]</i>	<i>[Signature]</i>
DATE 9-6-69	
AMENDMENT	SUFFIX



VIEW WITH ITEM 7 REMOVED



VIEW WITH ITEMS 6, 7, 14 & 17 REMOVED.



PART SECTION THROUGH ITEMS 9, 11 & 14
ITEM 7 OMITTED

TYPICAL MARKING
706F FMB9/24
(SEE SPEC D 1000)
CENTRALLY ON
OUTSIDE

SCHEDULE							
ITEM	DESCRIPTION	DRG.	No. OFF	SCREWS, ETC.	MTL.	FINISH	No. OFF
1	Ø BELL-GONG No 24A	91846	1	SC 4BA x 3/16 CH HD	MS	*	1
2	Ø BELL-GONG No 24B	91846	1	SC 4BA x 3/16 CH HD	MS	*	1
3	Ø BLOCK, TERMINAL No 52A (COLOUR)	92467	1				
4	Ø CORD, INSTRUMENT No 4/83AA (COLOUR) 72"	91048	1				
5	Ø CORD, INSTRUMENT No 4/89AK (COLOUR) 10"	91175	1				
6	Ø DIAL, AUTOMATIC No 21FA (COLOUR)	92526	1				
7	Ø HANDSET No 3 (COLOUR)	9199/2	1				
8	Ø REGULATOR No 1	91270	1				
9	Ø TELEPHONE No 706 (COLOUR) WIRING BOARD SUB-ASSY C & COMPONENT SHED	91273/2	1	SC 4BA x 5/16 CONN HD	BR.	NI P.	2
11	Ø PART 2/DBA/95 (BASE, TELEPHONE)	DBA/95	1				
12	Ø PART 2/DBU/259 (BUTTON)	DBU/259	4				
13	Ø PART 1/DCO/631 (COVER, DIAL, AUTO)	DCO/631	1				
14	Ø PART 1/DCO/736 (COLOUR) (COVER, TELEPHONE AUTOMATIC, COMPLETE)	DCO/736	1				
15	Ø PART 1/DLI/20 (LINK)	DLI/20	6				
16	Ø PART 2/DPL/778 (PLATE, METAL)	DPL/778	1				
17	Ø PART 3/DR/51 (RING, CLAMPING DIAL)	DR/51	1	SC 4BA x 1/2 CH HD SC 4BA x 3/16 CH HD	BR.	NI P.	1
18	Ø PART 2/DSU/12 (SUPPORT, WIRING BOARD)	DSU/12	1				

Ø REFERENCE DIMENSIONS

Ø 2K 2K DESIGN

COLOURS

FOR ALTERNATIVE DESIGN
SEE MARK 1, SHEET 1

DO NOT SCALE
(A MICROFILM PROCESS PRINT)

TELEPHONE No 706F (COLOUR)
(MARK 2A)

ASSEMBLY