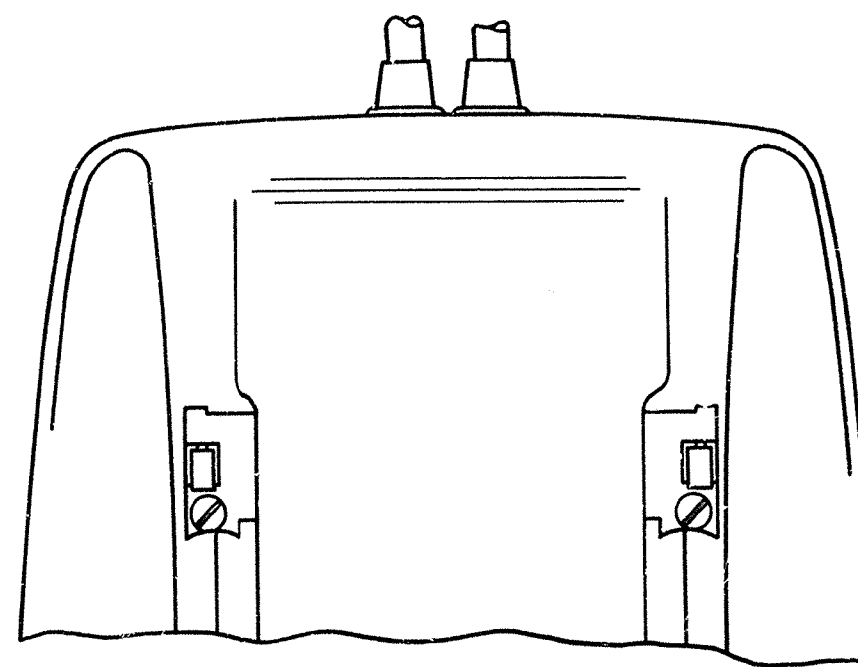
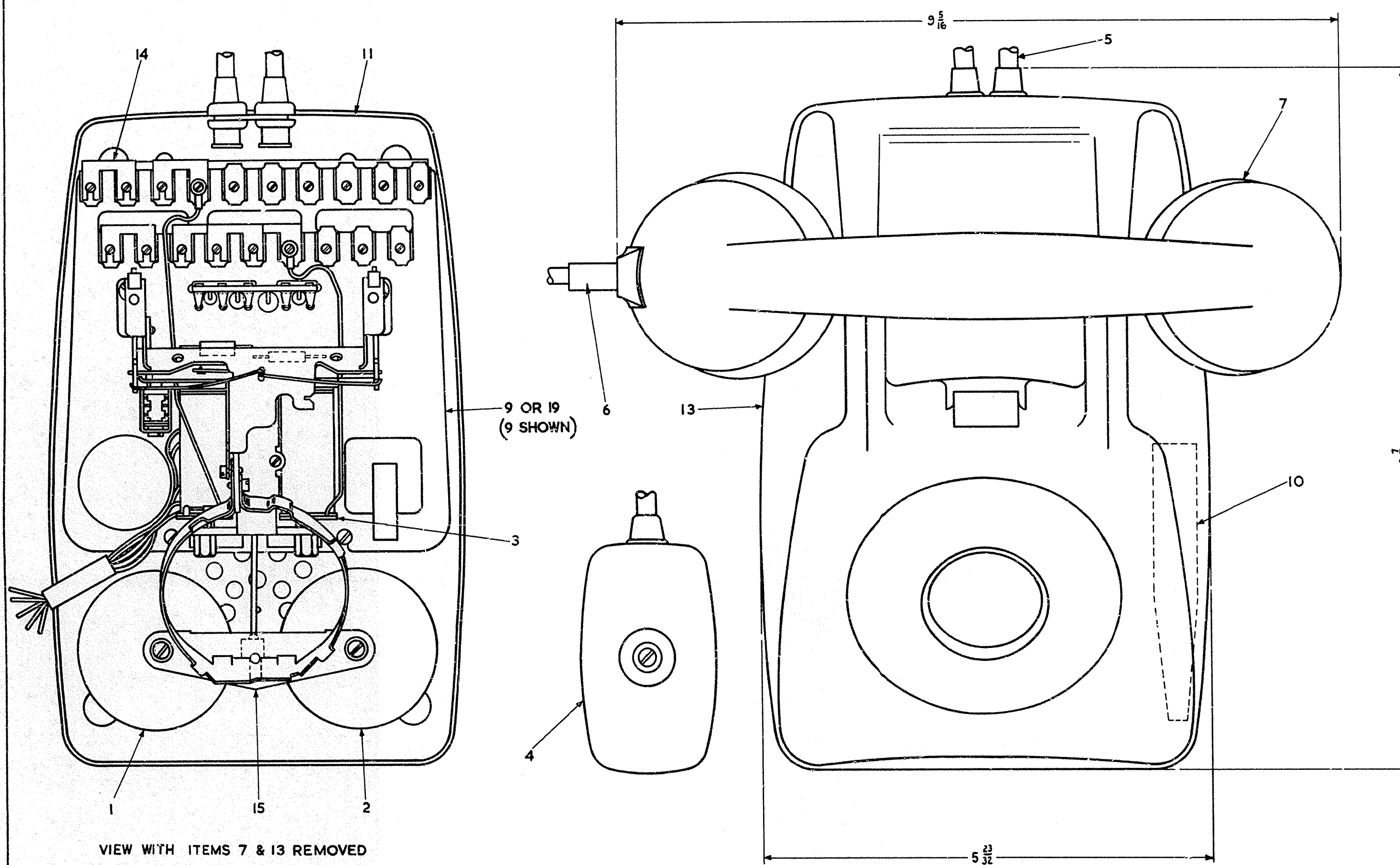


POST OFFICE ENGINEERING DEPT. S BRANCH		
DISTRIBUTION GENERAL		
P.O.		
REFERENCES		
SEE SCHED.	DGMN806	SPEC D1000
		5586
ASSEMBLY DRG	WIRING DGM N806	
FILE 53500/706	B.T.T.D.C.	SPEC 5586
SCALE $\frac{1}{T}$	AND AS INDICATED	THIRD ANGLE PROJECTION
DECIMAL DIMENSIONS NOT TOLERANCED SUBJECT TO		
APP'D IN S11 SECTION	DRN. PHOTO - COPIED & 600	TCD.
		CKD. <i>[Signature]</i>
		1.10.63
AMENDMENT		SUFFIX
SUPERSESSON NOTE ADDED		A
<i>[Signature]</i>		
2.6.11.63		



VIEW WITH ITEM 7 REMOVED



VIEW WITH ITEMS 7 & 13 REMOVED

PART SECTION THROUGH ITEMS 9, 11 & 13.
ITEM 7 OMITTED

ITEM	DESCRIPTION	DRG.	No. OFF		SCREWS, ETC.	MTL.	FINISH	No. OFF	
			706 CB (MK2)	706 CB (MK2) ALTERNATIVE CONSTRUCTION				706 CB (MK2)	706 CB (MK2) ALTERNATIVE CONSTRUCTION
1	Ø BELL - GONG N° 24A.	91846	1	1	SC. 4 B.A. x $\frac{5}{16}$ CH. HD.	M.S.	*	1	1
2	Ø BELL - GONG N° 24B.	91846	1	1	SC. 4 B.A. x $\frac{5}{16}$ CH. HD.	M.S.	*	1	1
3	Ø BELL N° 59A - 1 UNMOUNTED.	9874	1	1	SC. 4 B.A. x $\frac{1}{4}$ CH. HD.	M.S.	*	2	2
4	Ø BLOCK, TERMINAL N° 30 (COLOUR ...)	91148	1	1					
5	Ø CORD, INSTRUMENT N° 3/108AA (COLOUR ...) 54"	91046	1	1					
6	Ø CORD, INSTRUMENT N° 4/88AK (COLOUR ...) 10"	91175	1	1					
7	Ø HANDSET N° 3 (COLOUR ...)	91191	1	1					
8	Ø REGULATOR N° 1.	91270	1	1					
9	Ø TELEPHONE No. 706... (COLOUR) WIRING BOARD SUB-ASSEMBLY 'A' & COMPONENT SCHEDULE	91273/0	1	—					
10	LABEL, DIAGRAM N806. FOR ALTERNATIVE SEE SPEC. 5586	DGMN806 PANEL 2	1	1					
11	Ø PART 1/DBA/95 (BASE, TELEPHONE)	DBA/95	1	1	SC. 4 B.A. x $\frac{5}{16}$ CH. HD.	M.S.	*	2	2
12	Ø PART 2/DBU/259 (BUTTON)	DBU/259	4	4					
13	Ø PART 2/DCO/611 (COLOUR) COVER, TELEPHONE (CB COMPLETE)	DCO/611	1	1					
14	Ø PART 1/DLI/20 (LINK).	DLI/20	6	6					
15	Ø PART 1/DPL/778 (PLATE, METAL)	DPL/778	1	1					
16	Ø PART 1/DRI/51 (RING, CLAMPING, DIAL).	DRI/51	1	1	SC. 4 B.A. x $\frac{3}{16}$ CH. HD. SC. 4 B.A. x $\frac{3}{16}$ CH. HD.	BR. BR.	N.I.P.MT. N.I.P.MT.	1 1	1 1
17	Ø PART 1/DST/558 (STRIP, WIRING, TERMINATION)	DST/558	1	1					
18	Ø PART 1/DSU/12 (SUPPORT, WIRING BOARD)	DSU/12	1	—					
19	Ø TELEPHONE No. 706... (COLOUR) WIRING BOARD SUB-ASSEMBLY 'B' & COMPONENT SCHEDULE	91273/0	—	1					
20	Ø PART 2/DSU/12 (SUPPORT, WIRING BOARD)	DSU/12	—	1					

Ø REPLACEABLE ITEM.

* ZN. P. & PASS OR ZN. P. & LAC.

COLOURS:-
BLACK, BLUE, GREEN, GREY,
IVORY, RED, YELLOW.

FOR ALTERNATIVE DESIGN
SEE MARK 1, DRG. 91272/1 SHEET 1

DIMENSIONS IN INCHES.

DO NOT SCALE
(A MICROFILM PROCESS PRINT)

FOR SUPERSEDING ITEM FOR NEW WORK
SEE DRG. 91272/2 SHEET 2

TELEPHONE No. 706 CB (COLOUR)
(MARK 2)
ASSEMBLY