

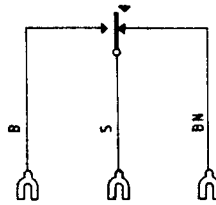
# AUXILIARY UNITS FOR TELEPHONE No. 706

SEE ALSO DGM N4700

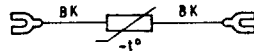
N808  
ISSUE G

1. PRESS BUTTONS FOR USE WITH SWITCH No 5A-3 ARE SPECIFIED IN DGM N809

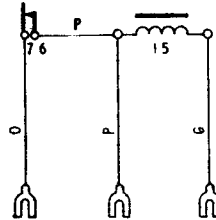
2. SWITCH No. 5A-3  
USED WITH BUTTONS AS REQUIRED TO GIVE LOCKING OR  
NON-LOCKING ACTION.  
SUPERSEDES FOR NEW WORK THE USE OF SWITCH No. 5A-1  
(NON-LOCKING ACTION) AND SWITCH No. 5A-2 (LOCKING  
ACTION)



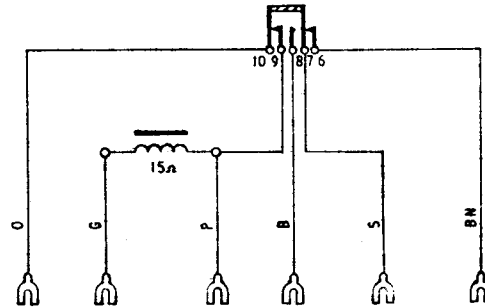
3. THERMISTOR No. 1A-1  
USED WITH SWITCH No. 5A-3 TO PROVIDE SHARED SERVICE  
FACILITY.  
TOGETHER, THEY SUPERSEDE ADAPTER, SHARED SERVICE  
No. 3 FOR NEW WORK.



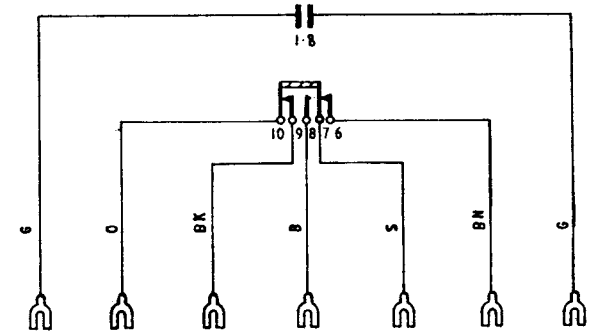
4. ADAPTER, LOCAL BATTERY No. 5  
SUPERSEDES ADAPTER, LOCAL BATTERY No. 1 FOR NEW  
WORK.



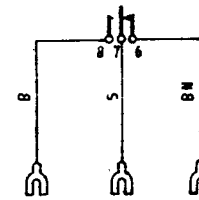
5. ADAPTER, LOCAL BATTERY No. 6  
SUPERSEDES ADAPTER, LOCAL BATTERY No. 2



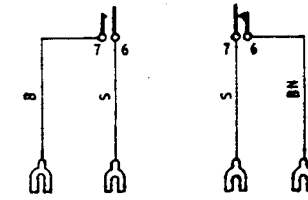
6. ADAPTER, PLAN SET No. 1



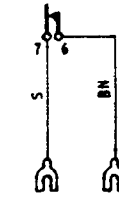
7. AUXILIARY GRAVITY SWITCH SPRINGSET (NOTE B)



PART No. 1/DSP/1233

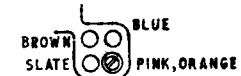


PART No. 1/DSP/1252

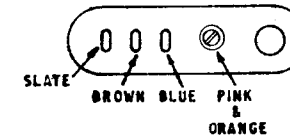


PART No. 1/DSP/1256

8. DIAL, AUTO, DUMMY, No. 7 (COLOUR) — FOR AUTO TO CB CONVERSION  
TELE No. 706 F MK I  
SLATE, BLUE AND BROWN WIRES TO BE SLEEVED AND PARKED IN THE APPROPRIATE HOLES  
IN THE BASE MOULDING. THE PINK AND ORANGE WIRES ARE TO BE JOINED UNDER  
THE TERMINAL.



TELE No. 706 F MK II  
PART 1/DST/558 TO BE REQUISITIONED SEPARATELY. SLATE, BLUE AND BROWN WIRES  
SHOULD BE PARKED ON THE 1/DST/558 WITH THE ORANGE AND PINK CONDUCTORS  
JOINED.



NOTES:-

- A. Gravity switch springsets included in item 4-7 are shown with the contacts in the condition as issued. When fitted to the telephone, this is the condition with the handset removed.
- B. All three items make, break and change-over will be stocked for as long as the demand makes it economical to do so.

PO TELECOMMS HQRS			
PAPER:- W	ISSUE		
DISTN:- GENERAL	G	New format minor amendments note B added	TD 7-11 <i>DBW</i> 2-9-74
	F	Redrawn new format. Editorial amendments	7-2-65